

NOV  
DEC | 18

# nine

## Magazine

For Members of the  
Nine Network of Public Media

---

Broadway Comes  
to Sunday  
Afternoons  
p.4

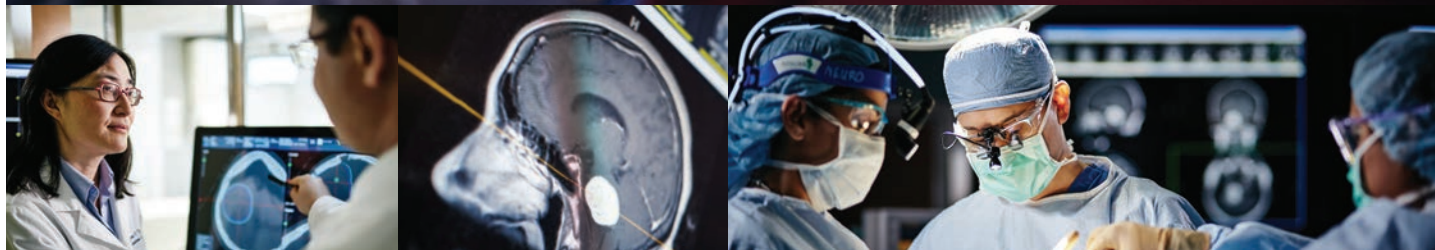
---

Series Gives Kids a  
Global Experience  
p.7

---

Raising Awareness  
about Skilled  
Careers  
p.8





National Leaders in:

*moving innovation forward.*

Brain tumor...life changing words. You want every possible resource engaged in the fight. At Siteman, we have a team of highly specialized Washington University Physicians who have dedicated their lives to fighting brain tumors. They bring a level of expertise and experience unmatched in the region, providing you with the most innovative treatment options, access to cutting-edge technology and minimally invasive techniques. That's the Siteman difference and it creates more reasons for hope than ever before. To learn more about our Brain Tumor and Neuro-Oncology Program, or to schedule an appointment, visit [siteman.wustl.edu](http://siteman.wustl.edu) or call 800-600-3606.



For a complete list of locations, visit [siteman.wustl.edu](http://siteman.wustl.edu) or call 800-600-3606.



# contents

NATURE: A SQUIRREL'S GUIDE TO SUCCESS  
PREMIERES NOVEMBER 14.

## NINE NETWORK FEATURES + EVENTS

### 2 Photo Montage

### 3 Message from the President

### 4 Broadway Programs Premiere on Sunday Afternoons

From one of the most famous movie musicals in Hollywood history to behind-the-scenes of two of Broadway's acclaimed stars.

### 6 New on Nine

*Let's Go Luna!* gives kids an appreciation of different cultures and provides exposure to social studies concepts.

### 8 Nine Networking

Increasing positive perceptions about skilled careers • Changes are coming to the PBS KIDS schedule • PBS app lets you watch Nine anytime • Emmy-nominated programs from Nine • 'Tis the season of giving

## PROGRAM GUIDE

### 15 November Listings

### 23 November Prime Time

### 24 Nine Create

### 25 Nine World

### 25 Nine PBS KIDS

### 26 December Listings

### 35 December Prime Time

**Nine Network**  
3655 Olive St.  
St. Louis, MO 63108  
(314) 512-9000  
Fax (314) 512-9005  
[letters@ketc.org](mailto:letters@ketc.org)

9 a.m. to 5 p.m.  
Monday–Friday

**Member Services**  
(314) 512-9199  
(800) 729-9966

**Director of Marketing and Communications**  
Matt Huelskamp

**Editor**  
Lynanne Feilen

**Designer**  
Christine Bosch

**Advertising Sales**  
(314) 432-8097  
Elaine Bodker  
Margo Cooper

©2018 St. Louis Regional Public Media Inc. All rights reserved. Reproduction of any portion of nineMagazine without express written permission from the publisher is prohibited.

nineMagazine (ISSN 1086-8828) (USPS 736-890) is published bimonthly by St. Louis Regional Public Media Inc., 3655 Olive St., St. Louis, MO 63108-3601. Periodicals class postage paid at St. Louis, MO. Postmaster: Send address changes to nineMagazine, 3655 Olive St., St. Louis, MO 63108-3601. Subscriptions are available by membership contribution of \$50 or more to the Nine Network, 3655 Olive St., St. Louis, MO 63108-3601.

Above: The extraordinary abilities of squirrels are put to the test on an obstacle course.

On the cover: Tony nominees, Robert Fairchild and Leanne Cope, star in the May 2017 run of *An American in Paris: The Musical* in London's West End. Photo by Nigel Norrington/ArenaPAL.

 [nineNet.org](http://nineNet.org)

 [TheNineNetwork](https://www.facebook.com/TheNineNetwork)

 [@TheNineNetwork](https://twitter.com/TheNineNetwork)

 [TheNineNetwork](https://www.youtube.com/TheNineNetwork)

 [TheNineNetwork](https://www.instagram.com/TheNineNetwork)

The Nine Network respects the privacy and confidentiality of our donors and will not sell, give or exchange any information to any entity.



1



2



3



4

- 1 **Trust in Media**  
Lisa Desjardins, PBS NewsHour correspondent, was the keynote speaker at the Pioneer Spirit Award Celebration on September 8.
- 2 **Celebrating Life on the River**  
The *Rivertowns* premiere screening on September 12 told the rich history of the Missouri River Valley.
- 3 **Follow the Money**  
At the *Dark Money* screening on September 17, director Kimberly Reed discusses the influence of untraceable corporate money on our elections.
- 4 **Fun in the Neighborhood**  
Be My Neighbor Day at the Storytime in the Commons on September 29 brought a record crowd.
- 5 **The Greatest Show on Earth**  
A lively discussion took place after the September 24 screening of *The Circus* with panelists (from left) Jim Kirchherr, senior director of content, Nine Network, Susan Bellows, senior producer, American Experience, Sharon Grimberg, writer/producer/director, and Elliana Grace and Jessica Hentoff from Circus Harmony.



5



**Nine Network  
Board of Directors**

*Chair*  
David Steward II

*Vice Chair*  
Mark C. Lindgren

*Treasurer*  
Kathy Barney

*Secretary*  
Cynthia Brinkley

*Members*  
Don Aven  
Spencer Burke  
Dan Burkhardt  
Maxine Clark  
David Conner  
Pepe Prince Finn  
Steven Frank  
Tim Goodson  
Harvey A. Harris  
Juanita Hinshaw  
Janet M. Holloway  
Dennis Hummel  
Ashley Kemper  
Edward Koplar  
Ken Kranzberg  
Mark Krieger  
Brendan Lind  
Dennis Lower  
Jeffrey McDonnell  
Mary Nelson  
Kim Olson  
David Rabe  
Jack Schreiber  
Hugh Scott III  
Thad Simons  
Patrick Sly  
James Snowden  
Chad Stiening, PhD  
Dr. Donald Suggs  
Sara Wade  
Milton P. Wilkins, Jr.

**Nine Network  
Senior Staff**

*President and CEO*  
Jack Galmiche

*Senior Vice President,  
COO and CFO*  
Richard E. Skalski

*Senior Vice President  
of Engagement  
and Content*  
Amy Shaw

*Vice President of  
Engineering and  
Operations*  
Chrys Marlow

**Open to the public:**

The public is invited to meetings of the Nine Network board of directors. For information about Nine's public meetings, call Cathy Peterson at (314) 512-9017.

Kim Olson (center) accepts the 2018 Pioneer Spirit Award from Jack Galmiche (left) and David Steward II, Nine Network Board Chair (right).

## Dear Friends,

As 2018 comes to a close, we are truly grateful to our community of supporters for helping us ignite the spirit of possibility in St. Louis.

In September we marked the conclusion of our \$50 million capacity building campaign at our annual Pioneer Spirit Award Celebration, where we thanked our many contributors.

Because of your generosity, we exceeded that goal. The campaign has enabled us to expand our facilities, build our Future Fund, and strengthen our community engagement programs and content.

When we needed people to chair the Igniting the Spirit of Possibility campaign, Kim Olson, alongside Pat Sly, stepped up as co-chairs. Kim was central to the campaign's success, holding numerous events in her home leading up to our first-ever gala last year.

Kim was recognized at the Pioneer Spirit Award Celebration with the 2018 Pioneer Spirit Award. Kim epitomizes our founders' strong belief in the power of educational television. She has been an active board member since 2010 and is a great ambassador for St. Louis. She and her husband, Bruce, are members of Nine's Visionary Leadership Circle.

On June 1, because of campaign funds, we were able to bring our programming into even more homes when we installed a new, more powerful antenna and transmitter to improve our signal. Now more people have access to the Nine Network and we are positioned to capitalize on next-generation broadcast technology.

Also in June, our Board of Directors approved a strategic plan for the next three years. Continuing and strengthening our strategies and tactics around community engagement to



inform content, measuring the impact of our work, maximizing our visibility in the region, and ensuring we have adequate financial resources to fund the organization are the main elements of the plan.

A companion to the 2021 Strategic Plan is the Master Facility Plan. We consider our facilities and technology integrated elements of what allow us to be successful. We will need the community's support to implement our plan. And, we are off to a great start. The Steward Family Foundation will provide a \$1 million grant to the Nine Network in support of the new Nine Innovation Center. We envision a media-centered space on our first floor that embraces the community. We sincerely thank the Steward Family for their continued support.

We appreciate the community's support of our one-of-a-kind, shared experiences. We held more than 50 public events in 2018, the majority of them free. From premieres and discussions to dancing and eating, and story time for our littlest citizens, our events bring the community together for the common good through the power and passion of public media.

We know how fortunate we are to have the support of the community. I wish you all a healthy and happy holiday season.

Yours truly,

A large, stylized handwritten signature in black ink, reading "Jack Galmiche". The signature is fluid and cursive, with a large loop at the end.

Jack Galmiche  
President and CEO

# state of the arts

GREAT PERFORMANCES PRESENTS  
NEW BROADWAY PROGRAMS SUNDAY  
AFTERNOONS.

You don't need to leave the comforts of home to see award-winning Broadway performances, orchestral masterpieces, or avant-garde dance. You can find world-class arts programming, including our *Night at the Symphony*, on Nine PBS Sunday afternoons—a great alternative to the usual commercial programming on the weekends.

We have programmed first-runs of Great Performances and other arts programming on Sundays afternoons, because viewers have told us they prefer going into the weekend with dramas, like *Father Brown* and *Midsomer Murders*, on Friday nights.

And, you can't get much better than Great Performances. Great Performances is television's longest-running performing arts anthology, featuring the best in music, dance and theater. This November you can see the U.S. broadcast premiere of the four-time Tony-winning stage adaptation of *An American in Paris The Musical*, the U.K. production of Rodgers & Hammerstein's *The Sound of Music*, and new documentaries about Broadway icon Harold Prince and John Leguizamo's Tony-nominated play *Latin History for Morons*.

You can watch these programs when they air or on your own schedule. They are online, free, for two weeks the day after the initial broadcast at [video.nineNet.org](http://video.nineNet.org), through the PBS app, or for an extended time through Nine Passport, a benefit of membership.







## An American in Paris: The Musical

Described as an extended symphonic tone poem, George Gershwin's 1928 composition "An American in Paris" was commissioned by the New York Philharmonic and rapidly became one of his most famous compositions. The 1951 MGM film starring Gene Kelly was inspired by Gershwin's score and became one of the most famous movie musicals in Hollywood history, winning six Academy Awards. In 2015, Paris finally came "home" to Broadway in a new stage adaptation of the film, directed and choreographed by dance wunderkind Christopher Wheeldon, which earned four Tony Awards.

During its May 2017 run in London's West End, the Broadway production was recorded with its original stars, Tony nominees Robert Fairchild and Leanne Cope.

*November 4, 1:30 p.m.*

## Rodgers & Hammerstein's The Sound of Music

Beloved by generations of audiences worldwide, "The Sound of Music" tells the inspiring true story of the von Trapp Family Singers

and their escape from Austria during the rise of Nazism. Rodgers and Hammerstein's 1959 hit stage musical garnered five Tony Awards, including Best Musical, and the blockbuster 1965 movie adaptation won five Oscars, including Best Picture.

Great Performances presents the 2015 live U.K. broadcast version starring Kara Tointon as Maria, Julian Ovenden as Captain von Trapp, Katherine Kelley as Baroness Schraeder, Alexander Armstrong as Max, and Maria Friedman as the Mother Abbess. Cinematically photographed on various adjoining sound stages, this production offers a more naturalistic interpretation of this great classic of the American musical theater.



*November 9, 8:00 p.m. and  
November 11, 3:30 p.m.*

## John Leguizamo's Road to Broadway

Beginning his career as a stand-up comic in the early 1980s, John Leguizamo (pictured on previous page) garnered early-career acclaim in 1993 with his memorable role in "Carlito's Way," which led to an extensive film and television career including roles in "To Wong Foo...", "Romeo + Juliet," "Moulin Rouge,"

and many more. But it has been in the theater that Leguizamo has been able to fully display his quicksilver comic brilliance and insightful social consciousness in a series of one-man shows: "Mambo Mouth," "Spic-O-Rama," "Freak," "Sexaholix...A Love Story" and "Ghetto Klown."

Great Performances presents this behind-the-scenes documentary directed by Ben DeJesus that chronicles Leguizamo's latest theatrical showcase, "Latin History for Morons," a highly comedic yet pointed look at the systematic repression of Hispanic culture throughout American history.

*November 18, 5:00 p.m.*

## Harold Prince: A Director's Journey

Directed by Lonny Price, this Great Performances retrospective celebrates the extraordinary career of producer and director Harold Prince, whose six decades in the theater form a bridge from the "Golden Age" of Broadway's mid-century to the contemporary theater of today. Winner of 21 Tony Awards (the most of any individual), Prince's peerless resume includes such legendary shows as "The Pajama Game," "Damn Yankees," "West Side Story," "Fiddler on the Roof," "Cabaret," "Company," "Follies," "Sweeney Todd," "Evita," "The Phantom of the Opera," "Kiss of the Spider Woman," and many more.

Featuring archival clips from his many groundbreaking productions, this fascinating performance-documentary features interviews with many of Prince's legendary collaborators, including Stephen Sondheim, Andrew Lloyd Webber, Mandy Patinkin, John Kander, Susan Stroman and Angela Lansbury. They share their firsthand insights into his pioneering achievements in the theater.

*January 6, 3:00 p.m.*



# new on nine

## New Series Encourages Kids to Be Global Citizens

*LET'S GO LUNA!* GIVES KIDS AN APPRECIATION OF DIFFERENT CULTURES AND PROVIDES EXPOSURE TO SOCIAL STUDIES CONCEPTS.

*Let's Go Luna!* premieres November 21 on Nine PBS and Nine PBS KIDS. It follows the adventures of three friends as they traverse the globe with their parents' traveling performance troupe, "Circo Fabuloso." At each of the Circo's stops, Luna the Moon, voiced by Judy Greer, guides Leo, a wombat from Australia; Carmen, a butterfly from Mexico; and Andy, a frog from the U.S., as they explore the food, music, art, architecture and other features that make each place distinctive.

*Let's Go Luna!* is produced with the goal of providing children with an authentic, immersive cultural experience. Each episode includes two 11-minute stories that are developed in consultation with cultural advisors from each region the Circo visits.

The narratives highlight each city's distinctive landscape and features. Songs capture regional musical styles and instrumentation, and interstitials feature traditional folktales associated with each location.

The *Let's Go Luna!* television series is part of a multiplatform media experience that will also include digital content for kids, parents and teachers beginning in late 2018. *Let's Go Luna!* will offer a variety of games at [nineNet.org/ninepbskids](http://nineNet.org/ninepbskids) and on the PBS KIDS Games App, as well as clips and full episodes across PBS KIDS streaming video platforms, including the PBS KIDS Video App.



**"The show combines humor, detail and artistry...with one of the core values of PBS KIDS: to encourage children's curiosity and invite them to learn more about the world."**

— Linda Simensky, Vice President,  
Children's Programming, PBS



# REACH FOR THE SKY.

When we work together, we can do anything. Boeing salutes those who engage the community with the diversity of ideas and experiences that inform the present and help guide the future.



## Thank you

to these sponsors for making the *Rivertowns*' premiere screening and broadcast possible.



**Trudy B. Valentine Family**

**Carlota (Lotsie) Clark Hermann Holton**  
7th Generation Captain William Clark

**William T. Kemper Foundation**



**Rivertowns can be streamed  
on [video.nineNet.org](https://video.nineNet.org).**



**nineNetwork** The nineNetwork logo icon, which is a stylized white number "9" inside a red circle.



# nine networking

## Increasing Positive Perceptions about Skilled Careers

American Graduate: Getting to Work is an initiative that aims to raise awareness of in-demand skilled careers, connect members and viewers with resources, and increase positive perceptions about these careers.

With a partner network of 47 trusted community organizations, which continues to grow, Nine Network's American Graduate initiative in the St. Louis region combines the knowledge of four different job sectors—education, corporate, non-profit, and government. The goal is to then tell stories about these high-demand, skilled careers and the resources available to those looking to enter them.

We recently aired *The Skills Gap: A Living St. Louis Special* on Nine PBS. The special included Brian Oliver, a young man who completed his internship here at Nine. He came to us through NPower, a community organization that prepares young people for entry level jobs in IT.

You also hear from Gary Markwardt, a machine operator at Davlan Engineering, an area company working to keep their skilled positions filled. Markwardt pursued his education at Jefferson College and found his career path in manufacturing. "I love what I do...I make things," he says. "Every day I come in there's a new challenge, so you're always on your toes."





As part of our *Working St. Louis* digital series online (or follow on Facebook), you will meet Aaron Wiskerchen. Wiskerchen is a welder who chose to go to State Technical College of Missouri even though he was told that he would need a four-year degree after high school. “If you don’t want to have to do years and years of schooling, and you want to start making money now, then I’d say, go to a technical school and find a program that suits what you’d like to do,” he says.

Jasmine Owens, a cyber security analyst, explains that her desire to help her family stay protected online led her to Midwest Cyber Center, a local organization that uses an apprenticeship model to teach cyber security. Says Owens, “When I found out I get to work in the field and also get the technical training, and get paid at the same time, with no cost to me, I jumped on it as soon as I could.”

Nine Network is the leader of the national American Graduate initiative and a national leader in public media engagement and content creation. Since 2011, Nine Network has led the initiative that highlights the importance of successful young people. Eighteen PBS stations across the nation look to the Nine Network for leadership in working within their local communities to foster awareness of high-demand skilled careers and connect young people to resources.

Watch *The Skills Gap: A Living St. Louis Special* and *Working St. Louis* at [nineNet.org/jobs](http://nineNet.org/jobs). ►



# LIVE HERE. GIVE HERE.

Talk to us about  
your charitable-giving  
plan. We can help.



[stlgives.org](http://stlgives.org)



## CAROL KLEIN

“Ferguson put our community at a crossroads. After artists painted boarded up windows, I published *Painting for Peace in Ferguson*, a book showing the amazing murals. It captures a moment when our community came together and called for a better future. The Foundation helped me create a charitable-giving fund, so that book sales benefit nonprofits and social initiatives in affected areas. The Foundation’s knowledge, charitable-giving stewardship, and expertise are invaluable.”



## Changes Are Coming to PBS KIDS Schedule

PBS KIDS and the Nine Network are dedicated to offering curriculum-based media content designed to meet the needs of today's kids.

The PBS KIDS schedule is updated on a regular basis to ensure that we are building as much engagement with

our audience as possible, and maximizing our reach among families. The next update starts November 21.

The PBS KIDS schedule changes were developed in partnership with member stations and based on research to ensure that we serve our audience with the programs that they love at the times of day that work best for them.



At The Willows, we're dedicated to the pursuit of lifelong learning!



Brush up on your painting skills, uncork a new favorite wine, explore the sculpture garden, or sample fine cuisines from around the world.

***What do you want to discover today?***

***The Willows Apartment Homes and Villas***

211 S. Woods Mill Rd ~ Chesterfield, MO 63017

314-576-0800 ~ [www.NewWillows.com](http://www.NewWillows.com)

**f: TheWillowsatBrookingPark**



## PBS App Lets You Watch Nine Anytime

Our entertaining and educational television programming has always been free thanks to our community of supporters and members. But did you know you also have access to on-demand streaming of Nine PBS content that doesn't require a paid subscription, only an Internet connection?

Many videos can be streamed online on various devices at [video.nineNet.org](http://video.nineNet.org) and on the PBS app for up to two weeks after broadcast without a membership.

Everyone can enjoy the most popular shows from PBS anywhere, anytime, including Masterpiece hits like *Poldark*, *Victoria*, *The Durrells in Corfu* as well as *Nature*, *NOVA*, *American Masters*, *American Experience*, and more.

Full-length videos from your favorite PBS and Nine Network shows with new videos added daily, like our most recent documentary, *Rivertowns: 100 Miles, 200 Years, Countless Stories*, and each week's *Donnybrook*.

You can download the PBS app for free on a host of devices. Find out how at [nineNet.org/](http://nineNet.org/) anywhere.

If you would like to become a Nine Passport member, a benefit that allows you extended access to PBS shows when their general streaming rights have expired or binge-watch entire new seasons, or activate your Passport account if you are an existing member at the \$60 level, go to [nineNet.org/passport](http://nineNet.org/passport).



PBS KIDS' newest series, *Let's Go Luna!*, joins the lineup on Wednesday, November 21. Grounded in a social studies and world cultures curriculum, the series follows the adventures of three friends as they traverse the globe with their parents' traveling performance troupe. At each of their stops, Luna the Moon guides the trio as they get to know the local region and its people.

In addition, beloved PBS KIDS literacy series *Martha Speaks* will join the PBS KIDS 24/7 channel and live stream on November 21.

Beginning November 21, PBS KIDS will sunset *Fetch! With Ruff Ruffman*, which has been out of production for many years. The star of the series will continue to appear on PBS KIDS digital platforms in *The Ruff Ruffman Show*, a short-form animated series

designed to help kids ages 4-8 learn core science concepts through videos, game-play and hands-on activities. *The Ruff Ruffman Show* is available for free on [nineNet.org/ninepbskids](http://nineNet.org/ninepbskids), the PBS KIDS Video app and the PBS KIDS YouTube channel.

Also, rights are set to expire on *Bob the Builder*, so we will discontinue airing the program on Nine PBS after November 20.

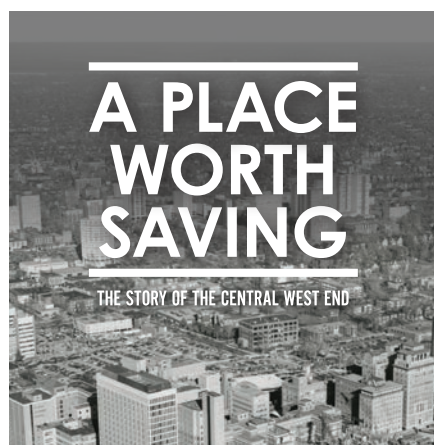
## Emmy-Nominated Programs from Nine

The Nine Network is proud to be recognized among the best of regional television. Congratulations to the Nine teams who produced programs recognized by the Mid-America Chapter of the National Academy of Television Arts and Sciences.

Anne-Marie Berger received two nominations for *Living St. Louis*. One segment featured Art McCoy, superintendent, Jennings School District. The other was on St. Louis Antique Lighting Company.

Patrick Murphy and Brian Holder were nominated for the historical documentary, *A Place Worth Saving: The Story of the Central West End*.


These Emmy-nominated programs can be viewed at [video.nineNet.org](http://video.nineNet.org). ▶



**NOW OPEN**

# Luxury Senior Living


## In Clayton/Richmond Heights



- Assisted Living designed to help you maintain an independent & active lifestyle.
- Family owned and managed by a St. Louis based company.

**CALL 314-332-8372**

**TO SPEAK WITH A SENIOR LIVING ADVISOR**



1055 Bellevue Avenue, Richmond Heights, MO 63117

[allegroliving.com](http://allegroliving.com)





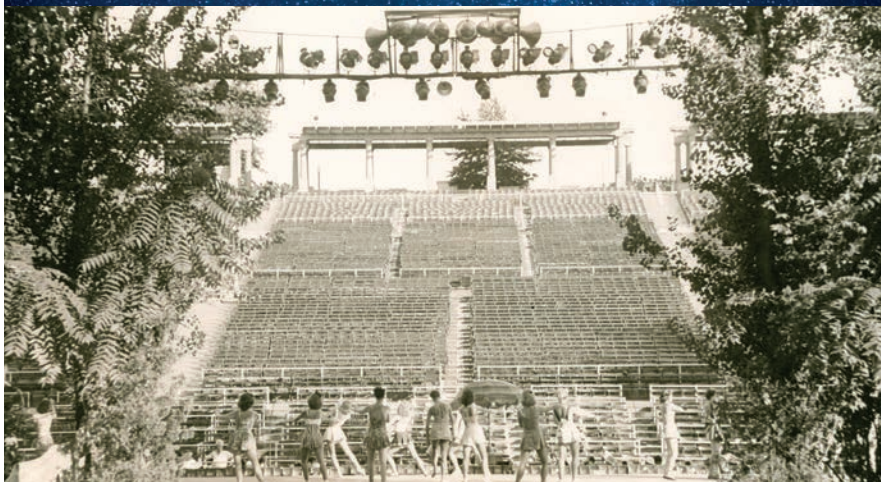
## Dine and Explore Italian at local restaurants with Midland Language Center

Multiple dates and venues available.  
Learn more and register online at  
[midlandlc.org](http://midlandlc.org) or call 314-265-3637  
for details.



**Now Open!**  
**Free Admission**

Presented by  
**EMERSON**



**MISSOURI HISTORY MUSEUM**  
MISSOURI HISTORICAL SOCIETY

Forest Park • [mohistory.org](http://mohistory.org)

**FIND  
YOURSELF  
HERE.**



## *Holiday Concert*

With Special Guests:  
The Ambassadors of Harmony

**December 1, 2018**  
**1 p.m. at Powell Hall**

Tickets available at [powellhall.com](http://powellhall.com)  
**[slccsing.org](http://slccsing.org) • 314.993.9626**

**LAGQ**  
**November 8, 2018**  
7:30pm | The Sheldon Concert Hall

**JÉRÔME  
MOUFFE**  
**December 8, 2018**  
8:00pm | The Ethical Society

**RICARDO  
COBO**  
**January 19, 2019**  
8pm | The Ethical Society

**TRIO  
VIRADO**  
**February 24, 2019**  
4:00pm | 560 Music Center –  
E. Desmond Lee Concert Hall

**IRINA  
KULIKOVA**  
**April 6, 2019**  
8:00pm | The Ethical Society

## ST. LOUIS CLASSICAL GUITAR

**SEASON AND  
INDIVIDUAL TICKETS  
ARE ON SALE NOW!**

Tickets at [www.stlclassicalguitar.org](http://www.stlclassicalguitar.org)  
or call 314-567-5566



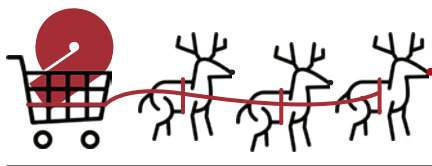


## 'Tis the Season of Giving

It's easy to support the Nine Network of Public Media during the giving season. The global campaign Giving Tuesday is November 27, the first Tuesday after Thanksgiving.

Please consider the Nine Network and our vision of a strong and healthy community working together through public media in your giving plans by making a donation on Giving Tuesday at [nineNet.org/support](http://nineNet.org/support).

Also, if you will be shopping with Amazon this holiday season, we are registered with the AmazonSmile program. AmazonSmile will donate 0.5% of the price of your eligible purchases to the Nine Network. Go to [nineNet.org/amazon](http://nineNet.org/amazon) to learn more



### STATEMENT OF OWNERSHIP, MANAGEMENT AND CIRCULATION

Title of publication: nineMagazine. Publication no.: 1086-8828. Date of filing: 9/18/18. Frequency of publication: bi-monthly. No. of issues published annually: 6. Annual subscription price: \$60. Mailing address of known office of publication: 3655 Olive St., St. Louis, MO 63108-3601. Mailing address of headquarters or general business office of publisher: 3655 Olive St., St. Louis, MO 63108-3601. Publisher: Nine Network of Public Media, 3655 Olive St., St. Louis, MO 63108-3601. Editor: Lynanne Feilen, 3655 Olive St., St. Louis, MO 63108-3601. Managing editor: none. Owner: Nine Network of Public Media, 3655 Olive St., St. Louis, MO 63108-3601. Known bondholders, mortgagees and other security holders owning or holding 1 percent or more of total amounts of bonds, mortgages or other securities: none. The purpose, function and nonprofit status of this organization has not changed during the preceding 12 months.

Extent and nature of circulation: Total no. of copies (Average no. of copies of each issue during the preceding 12 months) 39,570; (Actual no. of copies of single issue published nearest to filing date) 42,300. Outside county paid/requested mail subscriptions: (Average) 13,310; (Actual) 14,118. In-county paid/requested mail subscriptions: (Average) 22,594; (Actual) 23,487. Sales through dealers and carriers, street vendors, counter sales and other outside USPS: 0. Requested copies distributed by other classes of mail through USPS: 0. Total paid and/or requested circulation: (Average) 35,904; (Actual) 37,605. Outside county nonrequested copies (Average) 185; (Actual) 187. In-county nonrequested copies: (Average) 534; (Actual) 522. Nonrequested copies through the USPS by other classes of mail (Average and Actual): 0. Nonrequested copies distributed outside mail: (Average) 2447; (Actual) 2213. Total nonrequested distribution: (Average) 3166; (Actual) 2922. Total distribution: (Average) 39,070; (Actual) 40,527. Copies not distributed: (Average) 200; (Actual) 200. Total: (Average) 39,270; (Actual) 40,727. Percent paid: (Average) 91.90; (Actual) 92.79. (Signed) Lynanne Feilen, editor.



## #GIVINGTUESDAY

kicks off the time of year when many focus on their holiday and end-of-year giving. Please join with others in our community in supporting the **Nine Network** with a #GivingTuesday gift.

Your generosity will help sustain the Nine Network as a vital educational, cultural, and entertainment resource for all of us in the St. Louis region.



ON TUESDAY,  
NOVEMBER 27,  
**join the movement**



*“It never gets old listening to brilliance  
and simultaneously being entertained.”*



Maryville University wishes to thank the  
St. Louis community for its enthusiasm  
and support of another sold-out season  
of the St. Louis Speakers Series.

## ST. LOUIS SPEAKERS SERIES 2018–2019 SEASON AT POWELL HALL



JAMES  
COMEY



LISA  
GENOVA



GLORIA  
STEINEM



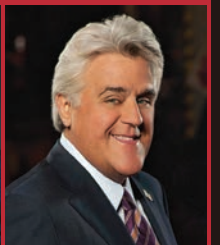
JEB  
BUSH



BRYAN  
STEVENSON



IAN  
BREMNER



JAY  
LENO

SPONSORED BY



[www.StLouisSpeakers.org](http://www.StLouisSpeakers.org)



# PROGRAM LISTINGS

# november

November primetime grid on page 23.

For program updates, visit [nineNet.org](http://nineNet.org)

## Listings Key

(9) ..... Nine Network production

(PB) ... Program contains  
pledge breaks

Special 1-hour kids' movies air November 6, 6:30 a.m.–1:00 p.m.

Programs are preempted for our Membership Drive: November 26–30, noon–3:00 p.m.

nine	PBS	OVER THE AIR	9.1	CHARTER DIGITAL CABLE	709
nine	PBS kids		9.2		183
nine	WORLD		9.3		185
nine	create		9.4		184

Dish Network and Direct TV carry only Nine PBS on, respectively, channel 8596 and 0009 (HD on 887). U-verse carries only Nine PBS on channel 9 or 1009 (HD).

## WEEKDAYS

	Monday	Tuesday	Wednesday	Thursday	Friday
5:00	Rick Steves' Europe				
5:30	Classical Stretch				
6:00	BBC World News				
6:30	Cat in the Hat Knows a Lot about That				
7:00	Nature Cat				
7:30	Curious George				
8:00	Pinkalicious & Peterrific (Let's Go Luna! starts 11/21)				
8:30	Daniel Tiger's Neighborhood (Let's Go Luna! premiere 11/21 & 23)				
9:30	Splash and Bubbles				
10:00	Sesame Street				
10:30	Super Why!				
11:00	Dinosaur Train				
11:30	Peg + Cat				
12:00	Sesame Street				
12:30	Mister Rogers' Neighborhood	Daniel Tiger's Neighborhood	Clifford the Big Red Dog	Sid the Science Kid	Splash and Bubbles; 11/30: Super Why!
1:00	Project Smoke	America's Test Kitchen	Martha Bakes	Simply Ming	Lidia's Kitchen
1:30	Finding Your Roots	Living St. Louis	11/7: Rick Steves Special; 11/14 & 21: We'll Meet Again	Taste of Malaysia	Great British Baking Show
2:00		tasteMAKERS		Kevin Belton's New Orleans	
2:30	Wild Kratts (Let's Go Luna! premiere on 11/21)				
3:30	Odd Squad				
4:30	Arthur				
5:30	BBC World News America				
6:00	PBS NewsHour				

## THU | NOV 1

### evening

- 7:00 Donnybrook (9)**
- 7:30 Donnybrook...Your Turn (9)**
- 8:00 Jamestown**
- 9:00 The Doctor Blake Mysteries**  
A social worker is murdered.
- 10:00 tasteMAKERS: Not So Fast**  
Snail farming in Cutchogue, NY.
- 10:30 Living St. Louis**  
The people, events, and history of our region. (9)
- 11:00 BBC World News**
- 11:30 Amanpour and Company**

### late night

- 12:30 NHK Newsline**
- 1:00 Secrets of the Dead**
- 2:00 Native America**
- 3:00 Smart Travels–Europe**
- 3:30 A Craftsman's Legacy**
- 4:00 Rare Visions & Roadside Revelations**
- 4:30 Travelscope**

## FRI | NOV 2

### evening

- 7:00 Washington Week**
- 7:30 Donnybrook (9)**
- 8:00 Father Brown**  
An imprisoned woman makes a confession.
- 9:00 Midsomer Murders: The Dogley Murders**  
A club steward wields power at a golf club.
- 10:35 The Cafe**  
Everyone fails to connect.
- 11:00 BBC World News**
- 11:30 Amanpour and Company**



## Rick Steves Special: The Story of Fascism in Europe

Rick Steves traces fascism's history from its roots in the turbulent aftermath of World War I to the rise of charismatic leaders who manipulated that anger. Along the way, he visits poignant sights throughout Europe relating to fascism, and talks with Europeans whose families lived through those times.

*Sunday, November 4, 4:00 p.m.*

### late night

- 12:30 **NHK Newslines**
- 1:00 **Donnybrook (9)**
- 1:30 **Donnybrook...Your Turn (9)**
- 2:00 **Living St. Louis (9)**
- 2:30 **tasteMAKERS: Not So Fast**
- 3:00 **Smart Travels—Europe**
- 3:30 **A Craftsman's Legacy**
- 4:00 **Rare Visions & Roadside Revelations**
- 4:30 **Travelscope**

## SAT | NOV 3

### morning

- 5:00 **Rick Steves' Europe**
- 5:30 **Travelscope**
- 6:00 **Bob the Builder**
- 6:30 **Daniel Tiger's Neighborhood**
- 7:00 **Pinkalicious & Peterrific**
- 7:30 **Splash and Bubbles**
- 8:00 **Curious George**
- 8:30 **Nature Cat**
- 9:00 **Ready Jet Go!**
- 9:30 **Burt Wolf: Travels & Traditions**
- 10:00 **Martha Stewart's Cooking School**
- 10:30 **Pati's Mexican Table**
- 11:00 **A Chef's Life**
- 11:30 **tasteMAKERS: Not So Fast**

### afternoon

- 12:00 **Milk Street Television**  
Mexican chicken soup with tomatillos.
- 12:30 **Sara's Weeknight Meals**

- 1:00 **America's Test Kitchen**  
Greek chicken and rice soup.
- 1:30 **Cook's Country**  
Tennessee pulled turkey sandwiches.
- 2:00 **Lidia's Kitchen**  
Rice balls with sausage ragu.
- 2:30 **Moveable Feast**  
Hip food culture in NYC's Tribeca.
- 3:00 **Living St. Louis (9)**
- 3:30 **tasteMAKERS: Not So Fast**
- 4:00 **Outside with Greg Aiello**  
Iceland's lesser-known national parks.
- 4:30 **Wild Travels**  
A Los Angeles museum devoted to death.
- 5:00 **This Old House**
- 5:30 **Ask This Old House**
- 6:00 **PBS NewsHour Weekend**
- 6:30 **tasteMAKERS: Not So Fast**

### evening

- 7:00 **Antiques Roadshow**
- 8:00 **Death in Paradise**
- 9:00 **Movie: The Elephant Man**  
(1980) A surgeon rescues a disfigured man. (2 hr, 4 min)
- 11:00 **Austin City Limits**  
Miguel and Alessia Cara.

### late night

- 1:00 **Frontline: The Facebook Dilemma**
- 3:00 **Smart Travels—Europe**
- 3:30 **A Craftsman's Legacy**
- 4:00 **Rare Visions & Roadside Revelations**
- 4:30 **Travelscope**

## SUN | NOV 4

### morning

- 5:00 **Rick Steves' Europe**
- 5:30 **Curious Traveler**
- 6:00 **Sesame Street**
- 6:30 **Daniel Tiger's Neighborhood**
- 7:00 **Pinkalicious & Peterrific**
- 7:30 **Splash and Bubbles**
- 8:00 **Curious George**
- 8:30 **Nature Cat**
- 9:00 **Ready Jet Go!**
- 9:30 **Living St. Louis (9)**
- 10:00 **tasteMAKERS: Not So Fast**
- 10:30 **Donnybrook (9)**
- 11:00 **The Great British Baking Show**

### afternoon

- 12:00 **Downton Abbey**  
An encore of Season 4 continues.
- 1:30 **Great Performances: An American in Paris The Musical**  
Relive the magic of Gershwin's 1928 composition.
- 4:00 **Rick Steves Special**  
How fascism rose and fell in Europe.
- 5:00 **Night at the Symphony**  
A collaboration between Nine and St. Louis Symphony Orchestra. (9)
- 6:00 **PBS NewsHour Weekend**
- 6:30 **tasteMAKERS**

### evening

- 7:00 **The Durrells in Corfu**  
Louisa makes a fuss over Gerry's birthday.
- 8:00 **Poldark**  
Ross whisks Demelza off for a getaway in London.



9:00 **The Woman in White**  
Laura learns the truth about her new husband.

10:00 **Movie: The Elephant Man**  
(1980) A surgeon rescues a disfigured man. (2 hr, 4 min)

#### late night

12:00 **Secrets of Her Majesty's Secret Service**

1:00 **Poldark**

2:00 **The Durrells in Corfu**

3:00 **Smart Travels—Europe**

3:30 **A Craftsman's Legacy**

4:00 **Rare Visions & Roadside Revelations**

4:30 **Travelscope**

## MON | NOV 5

#### evening

7:00 **Antiques Roadshow**  
A Pete Seeger autographed sign.

8:00 **Living St. Louis**  
The people, events and history of our region. (9)

8:30 **tasteMAKERS: Fun Ferments**  
Foods that use the ancient preservation technique.

9:00 **Antiques Roadshow**  
A British rainbow spatterware pot, circa 1860.

10:00 **Independent Lens: Dawnland**  
The indigenous child removal crisis in Maine.

11:00 **BBC World News**

11:30 **Amanpour and Company**

#### late night

12:30 **NHK Newline**

1:00 **The Woman in White**

2:00 **The Woman in White**

3:00 **Smart Travels—Europe**

3:30 **A Craftsman's Legacy**

4:00 **Rare Visions & Roadside Revelations**

4:30 **Travelscope**

## TUE | NOV 6

#### evening

7:00 **PBS NewsHour Election Night Coverage**

11:00 **BBC World News**

11:30 **Amanpour and Company**

#### late night

12:30 **NHK Newline**

1:00 **Antiques Roadshow**

2:00 **Antiques Roadshow**

3:00 **Smart Travels—Europe**

3:30 **A Craftsman's Legacy**

4:00 **Rare Visions & Roadside Revelations**

4:30 **Travelscope**

## WED | NOV 7

#### evening

7:00 **Nature: Super Cats: Science and Secrets**

Why are lions able to hunt cooperatively?

8:00 **Nova: Last B-24**

A mission to recover fallen airmen off the coast of Croatia.

9:00 **Sinking Cities: Tokyo**

10:00 **Rick Steves Special**  
Steves traces fascism's history.

11:00 **BBC World News**

11:30 **Amanpour and Company**

#### late night

12:30 **NHK Newline**

1:00 **Nature: Super Cats: Science and Secrets**

2:00 **Sinking Cities: Tokyo**

3:00 **Smart Travels—Europe**

3:30 **A Craftsman's Legacy**

4:00 **Rare Visions & Roadside Revelations**

4:30 **Travelscope**

## THU | NOV 8

#### evening

7:00 **Donnybrook (9)**

7:30 **Donnybrook...Your Turn (9)**

8:00 **Jamestown**

9:00 **The Doctor Blake Mysteries**  
Political and family tensions are uncovered.

10:00 **tasteMAKERS: Fun Ferments**

10:30 **Living St. Louis**  
The people, events and history of our region. (9)

11:00 **BBC World News**

11:30 **Amanpour and Company**

#### late night

12:30 **NHK Newline**

1:00 **Independent Lens: Dawnland**

2:00 **Rick Steves Special**

3:00 **Smart Travels—Europe**

3:30 **A Craftsman's Legacy**

4:00 **Rare Visions & Roadside Revelations**

4:30 **Travelscope**

## FRI | NOV 9

#### evening

7:00 **Washington Week**

7:30 **Donnybrook (9)**

8:00 **Great Performances: The Sound of Music**

A new production of the Rodgers & Hammerstein's musical. (PB)

10:30 **Living St. Louis**  
The people, events and history of our region. (9)

11:00 **BBC World News**

11:30 **Amanpour and Company**

#### late night

12:30 **NHK Newline**

1:00 **Donnybrook (9)**

1:30 **Donnybrook...Your Turn (9)**

2:00 **Living St. Louis (9)**

2:30 **tasteMAKERS: Fun Ferments**

3:00 **Smart Travels—Europe**

3:30 **A Craftsman's Legacy**

4:00 **Rare Visions & Roadside Revelations**

4:30 **Travelscope**

## SAT | NOV 10

#### morning

5:00 **Rick Steves' Europe**

5:30 **Travelscope**

6:00 **Bob the Builder**

6:30 **Daniel Tiger's Neighborhood**

7:00 **Pinkalicious & Peterrific**

7:30 **Splash and Bubbles**

8:00 **Curious George**

8:30 **Nature Cat**

9:00 **Ready Jet Go!**

9:30 **Burt Wolf: Travels & Traditions**  
Wolf heads to Kansas City.

10:00 **Martha Stewart's Cooking School**  
The infinite ways to prepare grains.

10:30 **Pati's Mexican Table**

11:00 **Feast TV: Great Grains**

11:30 **tasteMAKERS: Fun Ferments**

#### afternoon

12:00 **Milk Street Television**  
Scallion pancakes.

12:30 **Sara's Weeknight Meals**

1:00 **America's Test Kitchen**

1:30 **Cook's Country**

2:00 **Lidia's Kitchen**  
Swordfish skewers.

2:30 **Moveable Feast**  
Striped bass baked in a salt crust.

3:00 **Living St. Louis**  
The people, events and history of our region. (9)

3:30 **tasteMAKERS: Fun Ferments**

4:00 **Tending Nature**  
Protecting Oregon's Smith River.

4:30 **Beyond Your Backyard**  
The timber industry in Pennsylvania.

- 5:00 **This Old House**
- 5:30 **Ask This Old House**
- 6:00 **PBS NewsHour Weekend**
- 6:30 **tasteMAKERS: Fun Ferments**

#### evening

- 7:00 **Antiques Roadshow**  
A newspaper archive for the Manhattan Project.
- 8:00 **Death in Paradise**  
A poker player is poisoned.
- 9:00 **Movie: The Philadelphia Story**  
(1940) A socialite fights with her ex-husband. (1 hr, 52 min)
- 11:00 **Austin City Limits**  
Kacey Musgraves and Lukas Nelson.

#### late night

- 12:00 **Nova: Last B-24**
- 1:00 **Nature: Super Cats: Science and Secrets**
- 2:00 **Independent Lens: Dawnland**
- 3:00 **Smart Travels—Europe**
- 3:30 **A Craftsman's Legacy**
- 4:00 **Rare Visions & Roadside Revelations**
- 4:30 **Travelscope**

## SUN | NOV 11

#### morning

- 5:00 **Rick Steves' Europe**
- 5:30 **Curious Traveler**
- 6:00 **Sesame Street**
- 6:30 **Daniel Tiger's Neighborhood**
- 7:00 **Pinkalicious & Peterrific**
- 7:30 **Splash and Bubbles**
- 8:00 **Curious George**
- 8:30 **Nature Cat**
- 9:00 **Ready Jet Go!**
- 9:30 **Living St. Louis (9)**
- 10:00 **tasteMAKERS: Fun Ferments**
- 10:30 **Donnybrook (9)**
- 11:00 **The Great British Baking Show**

#### afternoon

- 12:00 **Father Brown**  
A prisoner reveals a confession about a former lover.
- 1:00 **Downton Abbey**  
Season 5 opens with adjusting to life in the Roaring Twenties.
- 2:30 **Jamestown**
- 3:30 **Great Performances: Rodgers & Hammerstein's The Sound of Music**
- 6:00 **PBS NewsHour Weekend**
- 6:30 **tasteMAKERS: Fun Ferments**

#### evening

- 7:00 **The Durrells in Corfu**  
Sven is arrested by police.
- 8:00 **Poldark**  
The Warleggans' domestic bliss comes under threat.
- 9:00 **The Woman in White**  
A sinister plan is set in motion.
- 10:00 **Movie: The Philadelphia Story**  
(1940) A socialite fights with her ex-husband. (1 hr, 52 min)

#### late night

- 12:00 **Royal Wives at War**
- 1:00 **Poldark**
- 2:00 **The Durrells in Corfu**
- 3:00 **Smart Travels—Europe**
- 3:30 **A Craftsman's Legacy**
- 4:00 **Rare Visions & Roadside Revelations**
- 4:30 **Travelscope**

## MON | NOV 12

#### evening

- 7:00 **Antiques Roadshow**  
A collection of Noel Coward memorabilia.
- 8:00 **Living St. Louis**  
The people, events and history of our region. (9)
- 8:30 **tasteMAKERS: On the Vine**  
Wines express a farm's high-desert terroir.
- 9:00 **Antiques Roadshow**  
Items from the Civil War battlefield.
- 10:00 **Independent Lens: The Cleaners**  
Workers who monitor offensive online posts.
- 11:30 **BBC World News**

#### late night

- 12:00 **Amanpour and Company**
- 1:00 **The Woman in White**
- 2:00 **Royal Wives at War**
- 3:00 **Smart Travels—Europe**
- 3:30 **A Craftsman's Legacy**
- 4:00 **Rare Visions & Roadside Revelations**
- 4:30 **Travelscope**

## TUE | NOV 13

#### evening

- 7:00 **We'll Meet Again**  
The Season 2 premiere.
- 8:00 **Native America: Cities of the Sky**  
(3 of 4) A 3D scan of a lost city on the Mississippi River.
- 9:00 **Native America: New World Rising**  
(4 of 4) A grass bridge in the Andes that spans centuries.
- 10:00 **Going to War**  
A story of the warrior told with insight and candor.
- 11:00 **BBC World News**
- 11:30 **Amanpour and Company**

#### late night

- 12:30 **NHK Newline**
- 1:00 **Antiques Roadshow**
- 2:00 **Antiques Roadshow**
- 3:00 **Smart Travels—Europe**
- 3:30 **A Craftsman's Legacy**
- 4:00 **Rare Visions & Roadside Revelations**
- 4:30 **Travelscope**

## WED | NOV 14

#### evening

- 7:00 **Nature: A Squirrel's Guide to Success**  
Treetop leaps inform new designs in robotics.
- 8:00 **Nova: Thai Cave Rescue**  
The rescue of 12 boys and their coach.
- 9:00 **Sinking Cities: London**
- 10:00 **War Birds: Diary of an Unknown Aviator**  
The profligate lifestyle of WWI pilots.
- 11:00 **BBC World News**
- 11:30 **Amanpour and Company**

#### late night

- 12:30 **NHK Newline**
- 1:00 **Nature: A Squirrel's Guide to Success**
- 2:00 **Sinking Cities: London**
- 3:00 **Smart Travels—Europe**
- 3:30 **A Craftsman's Legacy**
- 4:00 **Rare Visions & Roadside Revelations**
- 4:30 **Travelscope**

## THU | NOV 15

#### evening

- 7:00 **Donnybrook (9)**
- 7:30 **Donnybrook...Your Turn (9)**
- 8:00 **Jamestown**
- 9:00 **The Doctor Blake Mysteries**  
A famous actress is murdered at a charity event.
- 10:00 **tasteMAKERS: On the Vine**
- 10:30 **Living St. Louis**  
The people, events and history of our region. (9)
- 11:00 **BBC World News**
- 11:30 **Amanpour and Company**

#### late night

- 12:30 **NHK Newline**
- 1:00 **Native America: Cities of the Sky**
- 2:00 **Native America: New World Rising**
- 3:00 **Smart Travels—Europe**
- 3:30 **A Craftsman's Legacy**
- 4:00 **Rare Visions & Roadside Revelations**
- 4:30 **Travelscope**





## Nova: Thai Cave Rescue

In July 2018, the world held its breath as an international team of cave divers endeavored to rescue 12 boys and their soccer coach stranded deep in a flooded cave in Thailand. Follow the operation and discover the scientific ingenuity that made the rescue possible.

Wednesday, November 14, 8:00 p.m.

## FRI | NOV 16

### evening

- 7:00 **Washington Week**
- 7:30 **Donnybrook (9)**
- 8:00 **Father Brown**  
A diorama depicts the death of a mother.
- 9:00 **Midsomer Murders: The Black Book**  
Landscapes paintings are not what they seem.
- 10:35 **The Cafe**  
Nan proves she's as saucy as ever.
- 11:00 **BBC World News**
- 11:30 **Amanpour and Company**

### late night

- 12:30 **NHK Newslines**
- 1:00 **Donnybrook (9)**
- 1:30 **Donnybrook...Your Turn (9)**
- 2:00 **Living St. Louis (9)**
- 2:30 **tasteMAKERS: On the Vine**
- 3:00 **Smart Travels-Europe**
- 3:30 **A Craftsman's Legacy**
- 4:00 **Rare Visions & Roadside Revelations**
- 4:30 **Travelscope**

## SAT | NOV 17

### morning

- 5:00 **Rick Steves' Europe**
- 5:30 **Travelscope**
- 6:00 **Bob the Builder**
- 6:30 **Daniel Tiger's Neighborhood**
- 7:00 **Pinkalicious & Peterrific**

- 7:30 **Splash and Bubbles**
- 8:00 **Curious George**
- 8:30 **Nature Cat**
- 9:00 **Ready Jet Go!**
- 9:30 **Burt Wolf: Travels & Traditions**
- 10:00 **Martha Stewart's Cooking School**  
How to make salsa verde.
- 10:30 **Pati's Mexican Table**
- 11:00 **Feast TV: Wood Fired**
- 11:30 **tasteMAKERS: On the Vine**

### afternoon

- 12:00 **Milk Street Television**  
Chicken curry.
- 12:30 **Sara's Weeknight Meals**  
Chianti red pasta filled with goat cheese.
- 1:00 **America's Test Kitchen**  
Kale Caesar salad.
- 1:30 **Cook's Country**
- 2:00 **Lidia's Kitchen**  
Fried onion rings.
- 2:30 **Moveable Feast**  
Leek-filled snapper.
- 3:00 **Living St. Louis (9)**
- 3:30 **tasteMAKERS: On the Vine**
- 4:00 **Tending Nature**  
A new generation jump starts food programs.
- 4:30 **Beyond Your Backyard**  
American life in Colonial Williamsburg.
- 5:00 **This Old House**
- 5:30 **Ask This Old House**
- 6:00 **PBS NewsHour Weekend**
- 6:30 **tasteMAKERS: On the Vine**

### evening

- 7:00 **Antiques Roadshow**  
A painting of the Greenbrier River in WV.
- 8:00 **Death in Paradise**  
Thriller author is found dead.
- 9:00 **Movie: Terms of Endearment (1983)**  
The bond between a mother and daughter. (2 hr, 12 min)
- 11:30 **Austin City Limits**  
Janelle Monae.

### late night

- 12:30 **Living St. Louis (9)**
- 1:00 **Nature: A Squirrel's Guide to Success**
- 2:00 **Sinking Cities: London**
- 3:00 **Smart Travels-Europe**
- 3:30 **A Craftsman's Legacy**
- 4:00 **Rare Visions & Roadside Revelations**
- 4:30 **Travelscope**

## SUN | NOV 18

### morning

- 5:00 **Rick Steves' Europe**
- 5:30 **Curious Traveler**
- 6:00 **Sesame Street**
- 6:30 **Daniel Tiger's Neighborhood**
- 7:00 **Pinkalicious & Peterrific**
- 7:30 **Splash and Bubbles**
- 8:00 **Curious George**
- 8:30 **Nature Cat**
- 9:00 **Ready Jet Go!**
- 9:30 **Living St. Louis (9)**
- 10:00 **tasteMAKERS: On the Vine**
- 10:30 **Donnybrook (9)**
- 11:00 **The Great British Baking Show**



## Julia Louis-Dreyfus: The Mark Twain Prize

Louis-Dreyfus will be honored with the Kennedy Center's Mark Twain Prize for American Humor. Jerry Seinfeld, Stephen Colbert, Bryan Cranston and Tina Fey are among the performers who will salute her.

*Monday, November 19, 9:00 p.m.*

### afternoon

- 12:00 Father Brown**  
Diorama depicts death of a mother.
- 1:00 Downton Abbey**
- 2:00 Jamestown**
- 3:00 Hear Us**  
Three young musicians pursue their dreams.
- 4:00 Great Performances: In The Heights: Chasing Broadway Dreams**  
The story of the Tony Award for Best New Musical.
- 5:00 Great Performances: John Leguizamo's Road to Broadway**  
A look at the making of "Latin History for Morons."
- 6:00 PBS NewsHour Weekend**
- 6:30 tasteMAKERS: On the Vine**

### evening

- 7:00 The Durrells in Corfu**  
Louisa and Spiro grow closer.
- 8:00 Poldark**  
Ross tries to mend things with Demelza.
- 9:00 The Woman in White**  
Walter risks everything for the woman he loves.
- 10:00 Movie: Terms of Endearment (1983)** The bond between a mother and daughter. (2 hr, 12 min)

### late night

- 12:30 Living St. Louis (9)**
- 1:00 Poldark**
- 2:00 The Durrells in Corfu**
- 3:00 Smart Travels—Europe**
- 3:30 A Craftsman's Legacy**
- 4:00 Rare Visions & Roadside Revelations**
- 4:30 Travelscope**

## MON | NOV 19

### evening

- 7:00 Antiques Roadshow**
- 8:00 Living St. Louis (9)**
- 8:30 tasteMAKERS: Shelled Out**  
Sustainable shellfish farming.
- 9:00 Julia Louis-Dreyfus: The Mark Twain Prize**  
Louis-Dreyfus accepts the prize for American humor.
- 10:30 Independent Lens: The Judge**  
Islamic law as told by the Middle East's first woman judge.

### late night

- 12:00 Amanpour and Company**
- 1:00 The Woman in White**
- 2:00 Secrets of Scotland Yard**
- 3:00 Smart Travels—Europe**
- 3:30 A Craftsman's Legacy**
- 4:00 Rare Visions & Roadside Revelations**
- 4:30 Travelscope**

## TUE | NOV 20

### evening

- 7:00 We'll Meet Again**  
Surviving the Holocaust.
- 8:00 Frontline: Documenting Hate: New American Nazis**  
An expose on the group's terrorist objectives.
- 9:00 Frontline: Documenting Hate: Charlottesville**  
How racist violence continues to operate.
- 10:00 Finding Home: A Foster Youth Story**  
Four youths prepare for life outside the system.
- 11:00 BBC World News**
- 11:30 Amanpour and Company**

### late night

- 12:30 NHK Newslines**
- 1:00 Antiques Roadshow**
- 2:00 Julia Louis-Dreyfus: The Mark Twain Prize**
- 3:30 A Craftsman's Legacy**
- 4:00 Rare Visions & Roadside Revelations**
- 4:30 Travelscope**

## WED | NOV 21

### evening

- 7:00 Nature: Dogs in the Land of Lions**  
A wild dog raises two generations of pups on her own.
- 8:00 Nova: World's Fastest Animal**  
The Peregrine falcon is famously the fastest bird.
- 9:00 Sinking Cities: Miami**
- 10:00 Shanghai 1937: Where World War II Began**  
The day China "stood up."
- 11:00 BBC World News**
- 11:30 Amanpour and Company**

### late night

- 12:30 NHK Newslines**
- 1:00 Nature: Dogs in the Land of Lions**
- 2:00 Sinking Cities: Miami**
- 3:00 Smart Travels—Europe**
- 3:30 A Craftsman's Legacy**
- 4:00 Rare Visions & Roadside Revelations**
- 4:30 Travelscope**

## THU | NOV 22

### evening

- 7:00 Show Me 66: Main Street through Missouri**  
Explore the sights and landscapes along Route 66 in MO.
- 8:00 Jamestown**
- 9:00 The Doctor Blake Mysteries**  
Blake is drawn into a maze of sexual politics and revenge.
- 10:00 tasteMAKERS: Shelled Out**
- 10:30 Living St. Louis (9)**
- 11:00 BBC World News**
- 11:30 Amanpour and Company**

### late night

- 12:30 NHK Newslines**
- 1:00 Frontline: Documenting Hate: New American Nazis**
- 2:00 Frontline: Documenting Hate: Charlottesville**
- 3:00 Smart Travels—Europe**
- 3:30 A Craftsman's Legacy**
- 4:00 Rare Visions & Roadside Revelations**
- 4:30 Travelscope**

## FRI | NOV 23

### evening

- 7:00 Washington Week**
- 7:30 Living St. Louis (9)**
- 8:00 Father Brown**  
Mrs. McCarthy's daughter disappears.
- 9:00 Midsomer Murders: Secrets and Spies**  
Visiting VIP is sent to a safe house.



- 10:35 The Cafe**  
Chloe makes an unwelcome discovery.
- 11:00 BBC World News**
- 11:30 Amanpour and Company**
- late night*
- 12:30 NHK Newsline**
- 1:00 Frontline: Documenting Hate: New American Nazis**
- 2:00 Living St. Louis (9)**
- 2:30 tasteMAKERS: Shelled Out**
- 3:00 Feel Better Fast and Make It Last with Dr. Daniel Amen (PB)**
- 4:30 Rick Steves' Festive Europe (PB)**

## SAT | NOV 24

### morning

- 5:00 Rick Steves' Europe**
- 5:30 Travelscope**
- 6:00 Sesame Street**
- 6:30 Daniel Tiger's Neighborhood**
- 7:00 Pinkalicious & Peterrific**
- 7:30 Curious George**
- 8:00 Super Woman Rx with Dr. Taz (PB)**
- 10:00 Forever Painless with Miranda Esmonde-White (PB)**
- 11:00 Healthy Brain-Happy Life with Dr. Suzuki (PB)**

### afternoon

- 1:00 Rick Steves' Travel as a Political Act**  
Come home with a better understanding of the world. (PB)
- 2:30 Aging Backwards 2 with Miranda Esmonde-White**  
An updated guide to anti-aging. (PB)
- 3:30 Feel Better Fast and Make It Last with Dr. Daniel Amen**  
How to overcome negativity, anxiety and anger. (PB)
- 5:00 The Everly Brothers: Harmonies from Heaven**  
A documentary about this great harmony duo. (PB)
- 6:30 Tommy Emmanuel: Center Stage**  
A performance by the Australian musician. (PB)

### evening

- 8:00 The World's Greatest Fair**  
Stories about the 1904 World's Fair in St. Louis. (PB)
- 11:00 Food: What the Heck Should I Eat? with Mark Hyman, MD**  
Find out which foods nurture your health. (PB)
- late night*
- 1:00 Memory Rescue with Daniel Amen, MD (PB)**
- 3:00 Healthy Brain-Happy Life with Dr. Suzuki (PB)**

## SUN | NOV 25

### morning

- 5:00 Rick Steves' Europe**
- 5:30 Curious Traveler**
- 6:00 Sesame Street: A Very Sesame Street Thanksgiving**
- 6:30 Daniel Tiger's Neighborhood**
- 7:00 Pinkalicious & Peterrific**
- 7:30 Curious George**
- 8:00 Memory Rescue with Daniel Amen, MD (PB)**
- 10:00 Retire Safe and Secure with Ed Slott (PB)**

### afternoon

- 12:00 Live Better Now with Mimi Guarneri, MD (PB)**
- 1:30 Rick Steves' Tasty Europe (PB)**
- 2:00 Jamestown (PB)**
- 4:00 Sinatra in Concert at Royal Festival Hall**  
His 1971 London concert. (PB)
- 5:30 Englebert Humperdinck in Hawaii**  
His 2018 return to Hawaii after 36 years. (PB)

### evening

- 7:00 Peter, Paul and Mary**  
The trio's performances at the Newport Folk Festival. (PB)
- 8:30 Tom Petty & the Heartbreakers from Gainesville**  
A 2006 show to commemorate the band's 30th anniversary. (PB)
- 10:00 3 Steps to Incredible Health! with Dr. Joel Fuhrman**  
A program to prevent disease. (PB)

### late night

- 12:00 Aging Backwards 2 with Miranda Esmonde-White (PB)**
- 1:00 Super Woman Rx with Dr. Taz (PB)**
- 3:00 On the Psychiatrist's Couch with Daniel Amen, MD (PB)**
- 4:00 Rare Visions & Roadside Revelations**
- 4:30 Travelscope**

## MON | NOV 26

### evening

- 7:00 Antiques Roadshow (PB)**
- 8:30 Rivertowns: 100 Miles, 200 Years, Countless Stories**  
How the Missouri River Valley has influenced the country. (PB)
- 10:00 Feel Better Fast and Make It Last with Dr. Daniel Amen (PB)**
- 11:30 10-Day Belly Slimdown with Dr. Kellyann**  
A plan to lighter, younger you. (PB)



## Rivertowns: 100 Miles, 200 Years, Countless Stories

From the contributions of German immigrants to the fledgling wine industry and the long-lasting implications of the area's industrial efforts during World War II, this one-hour Nine Network special looks at the historical significance of the Missouri River Valley. Ellie Kemper introduces the film by welcoming viewers to her hometown.

*Monday, November 26, 8:30 p.m.*

### late night

- 1:00 BBC World News**
- 1:30 Amanpour and Company**
- 2:30 NHK Newsline**
- 3:00 Smart Travels-Europe**
- 3:30 A Craftsman's Legacy**
- 4:00 Rare Visions & Roadside Revelations**
- 4:30 Travelscope**

## TUE | NOV 27

### evening

- 7:00 Jesse Cook: One Night at the Metropolis**  
Canadian guitar virtuoso performs. (PB)
- 8:30 Wish You Were Here! A Century of Missouri State Parks**  
Uncover the beauty of one of America's oldest state park systems. (PB)
- 9:30 Peter, Paul and Mary**  
The trio's performances at the Newport Folk Festival. (PB)
- 11:00 The New Play Piano in a Flash: 3 Steps to Piano Success**  
Stop dreaming and start playing piano today. (PB)

## late night

- 1:00 BBC World News
- 1:30 Amanpour and Company
- 2:30 NHK Newsline
- 3:00 Smart Travels–Europe
- 3:30 A Craftsman's Legacy
- 4:00 Rare Visions & Roadside Revelations
- 4:30 Travelscope

## WED | NOV 28

### evening

- 7:00 Nature: Snow Bears (PB)
- 8:30 Tom Petty & the Heartbreakers from Gainesville (PB)  
A 2006 show to commemorate the band's 30th anniversary. (PB)
- 10:00 ADD and Loving It?!  
A blend of humor, hope and science. (PB)
- 11:30 Antiques Roadshow (PB)
- late night
- 1:00 BBC World News
- 1:30 Amanpour and Company
- 2:30 NHK Newsline

- 3:00 Smart Travels–Europe
- 3:30 A Craftsman's Legacy
- 4:00 Rare Visions & Roadside Revelations
- 4:30 Travelscope

## THU | NOV 29

### evening

- 7:00 Donnybrook (9) (PB)
- 8:00 Doc Martin: Seven Grumpy Seasons  
Prep for the return of Doc Martin this January. (PB)
- 9:30 The World's Greatest Fair (PB)  
Stories about the 1904 World's Fair in St. Louis. (PB)
- late night
- 12:30 Rick Steves' Festive Europe (PB)
- 1:00 BBC World News
- 1:30 Amanpour and Company
- 2:30 NHK Newsline
- 3:00 Smart Travels–Europe
- 3:30 A Craftsman's Legacy
- 4:00 Rare Visions & Roadside Revelations
- 4:30 Travelscope

## FRI | NOV 30

### evening

- 7:00 Washington Week
- 7:30 Donnybrook
- 8:00 Englebert Humperdinck in Hawaii (PB)  
His 2018 return to Hawaii after 36 years. (PB)
- 9:30 Tom Petty & the Heartbreakers from Gainesville (PB)  
A 2006 show to commemorate the band's 30th anniversary. (PB)
- 11:00 Neil Diamond: Hot August Night III  
A 2012 performance at Los Angeles' Greek Theatre. (PB)

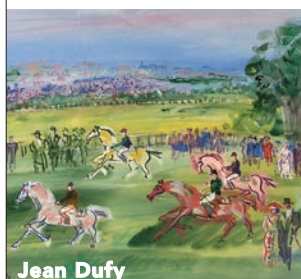
### late night

- 12:30 Rick Steves' Tasty Europe (PB)
- 1:00 BBC World News
- 1:30 Amanpour and Company
- 2:30 Jesse Cook: One Night at the Metropolis (PB)
- 4:00 Rick Steves' Heart of Italy (PB)
- 4:30 Travelscope



[www.kodnergallery.com](http://www.kodnergallery.com)

A St. Louis landmark for nearly 50 years, Kodner Gallery offers a large selection of the highest quality fine art and antiques at the most affordable prices.



Jean Dufy



Frank Stella



Paul Cornoyer

Kodner Gallery is proud to support the Nine Network and to serve the St. Louis community through our Trash or Treasure fine art and antiques evaluation events.



*Always buying and consigning. Free verbal evaluations daily.*

9650 Clayton Road in Ladue - 314-993-4477 / 800-993-4478



## BECOME A SUSTAINING MEMBER

Nine Sustainers are crucial to providing a dependable, ongoing source of funding for the Nine Network.

### BENEFITS

**Convenience.** Donations are made monthly through an automatic credit card charge or checking account withdrawal, saving you time.

**Peace of mind.** Your membership automatically renews each year and is always active.

**Flexibility.** You're in control because you can change your payments level at any time.

**Satisfaction.** Your support is helping us reduce administrative costs and invest in the outstanding programs you expect.



# prime time

**9.1**  
NOVEMBER

	7:00	7:30	8:00	8:30	9:00	9:30	10:00	10:30	
THU 1	Donnybrook	...Your Turn	Jamestown		The Doctor Blake Mysteries		tasteMAKERS	Living St. Louis	
FRI 2	Washington...	Donnybrook	Father Brown		Midsomer Murders: The Dogleg Murders			The Cafe	
SAT 3	Antiques Roadshow		Death in Paradise		Movie: The Elephant Man				
SUN 4	The Durrells in Corfu		Poldark		The Woman in White		Movie: The Elephant Man		
MON 5	Antiques Roadshow		Living St. Louis	tasteMAKERS	Antiques Roadshow		Independent Lens: Dawnland		
TUE 6	PBS NewsHour Election Night Coverage								
WED 7	Nature: Super Cats		Nova: Last B-24		Sinking Cities: Tokyo		Rick Steves Special		
THU 8	Donnybrook	...Your Turn	Jamestown		The Doctor Blake Mysteries		tasteMAKERS	Living St. Louis	
FRI 9	Washington...	Donnybrook	Great Performances: The Sound of Music						Living St. Louis
SAT 10	Antiques Roadshow		Death in Paradise		Movie: The Philadelphia Story				
SUN 11	The Durrells in Corfu		Poldark		The Woman in White		Movie: The Philadelphia Story		
MON 12	Antiques Roadshow		Living St. Louis	tasteMAKERS	Antiques Roadshow		Independent Lens: The Cleaners		
TUE 13	We'll Meet Again		Native America: Cities of the Sky		Native America: New World Rising		Going to War		
WED 14	Nature: A Squirrel's Guide to Success		Nova: Thai Cave Rescue		Sinking Cities: London		War Birds: Diary of an Unknown...		
THU 15	Donnybrook	...Your Turn	Jamestown		The Doctor Blake Mysteries		tasteMAKERS	Living St. Louis	
FRI 16	Washington...	Donnybrook	Father Brown		Midsomer Murders: The Black Book			The Cafe	
SAT 17	Antiques Roadshow		Death in Paradise		Movie: Terms of Endearment				
SUN 18	The Durrells in Corfu		Poldark		The Woman in White		Movie: Terms of Endearment		
MON 19	Antiques Roadshow		Living St. Louis	tasteMAKERS	Julia Louis-Dreyfus: The Mark Twain Prize			Independent...	
TUE 20	We'll Meet Again		Frontline: Documenting Hate: New...		...Documenting Hate: Charlottesville		Finding Home: A Foster Youth Story		
WED 21	Nature: Dogs in the Land of Lions		Nova: World's Fastest Animal		Sinking Cities: Miami		Shanghai 1937: Where World War II...		
THU 22	Show Me 66		Jamestown		The Doctor Blake Mysteries		tasteMAKERS	Living St. Louis	
FRI 23	Washington...	Living St. Louis	Father Brown		Midsomer Murders: Secrets and Spies			The Cafe	
SAT 24	(6:30) Tommy Emmanuel: Center...		The World's Greatest Fair						
SUN 25	Peter, Paul and Mary at Newport			Tom Petty & the Heartbreakers from Gainesville			3 Steps to Incredible Health!		
MON 26	Antiques Roadshow			Rivertowns: 100 Miles, 200 Years, Countless Stories			Feel Better Fast and Make It Last		
TUE 27	Jesse Cook: One Night at the Metropolis			Wish You Were Here!		Peter, Paul and Mary			
WED 28	Nature: Snow Bears			Tom Petty & the Heartbreakers from Gainesville			ADD and Loving It?!		
THU 29	Donnybrook		Doc Martin: Seven Grumpy Seasons			The World's Greatest Fair			
FRI 30	Washington...	Donnybrook	Englebert Humperdinck in Hawaii			Tom Petty & the Heartbreakers from Gainesville			

	SUNDAY	MONDAY	TUESDAY	WEDNESDAY	THURSDAY	FRIDAY
<b>5:00 AM</b>	Knit and Crochet Now	Quilting Arts	Sewing with Nancy	Knit and Crochet Now	It's Sew Easy	Love of Quilting
<b>5:30</b>	Painting & Travel	Paint This	Best of the Joy of Painting	Painting with Wilson Bickford	Best of the Joy of Painting	Paint This
<b>6:00</b>	New Scandinavian Cooking	Ellie's Real Good Food	Taste of Louisiana	New Scandinavian Cooking	Taste of Louisiana	Ellie's Real Good Food
<b>6:30</b>	Ciao Italia	Milk Street Television; begins 11/26: New Orleans Cooking	Project Smoke	Ciao Italia	Project Smoke	Milk Street Television; begins 11/30: New Orleans Cooking
<b>7:00</b>	Jacques Pepin: More Fast Food	Moveable Feast	Dining with the Chef	Jacques Pepin: More Fast Food	Mexico— One Plate at a Time	Moveable Feast
<b>7:30</b>	A Chef's Life	Lebanese Kitchen; begins 11/19: Food over 50	Storyteller in the Kitchen; begins 11/27: Free Range Chef	A Chef's Life	Storyteller in the Kitchen; begins 11/29: Free Range Chef	Lebanese Kitchen; begins 11/23: Food over 50
<b>8:00</b>	Trails to Tsukiji	Destination Craft	Travels with Darley	Born to Explore	Travels with Darley	Destination Craft
<b>8:30</b>	Journeys in Japan	Travelscope	Weekend with Yankee	In the Americas	Weekend with Yankee	Travelscope
<b>9:00</b>	Ask This Old House	This Old House	Craftsman's Legacy	Ask This Old House	Rough Cut; begins 11/8: Craftsman's Legacy	This Old House
<b>9:30</b>	The Woodright's Shop	American Woodshop	Woodsmith Shop	The Woodright's Shop	Woodsmith Shop	American Woodshop
<b>10:00</b>	Garden Smart	Garden Home	Growing a Greener World	Garden Smart	Growing a Greener World	Garden Home
<b>10:30</b>	Make 48	Beads, Baubles & Jewels	For Your Home	Make 48	For Your Home	Visionkeepers
<b>11:00-4:30</b>	Repeat of Saturday Marathon	Repeat of 5–10:30 a.m. programming, except 3 p.m. Rick Steves' Europe				
<b>5:00</b>	Ask This Old House	This Old House	Craftsman's Legacy	Ask This Old House	Craftsman's Legacy	This Old House
<b>5:30</b>	How to Cook Well with Rory O'Connell					
<b>6:00</b>	Food Flirts	Simply Ming	Pati's Mexican Table	Food Flirts	Pati's Mexican Table	Simply Ming
<b>6:30</b>	Taste the Islands	Sara's Weeknight Meals	Mike Colameco's Real Food	Taste the Islands	Mike Colameco's Real Food	Sara's Weeknight Meals
<b>7:00</b>	Martha Stewart's Cooking School	Lidia's Kitchen	Martha Stewart's Cooking School	Lidia's Kitchen	Martha Stewart's Cooking School	Lidia's Kitchen
<b>7:30</b>	America's Test Kitchen	Cook's Country	America's Test Kitchen	Cook's Country	America's Test Kitchen	Cook's Country
<b>8:00</b>	Project Fire	Yan Can Cook	Project Fire; begins 11/27: Plates & Places	Yan Can Cook	Project Fire; begins 11/29: Plates & Places	Yan Can Cook
<b>8:30</b>	How to Cook Well with Rory O'Connell					
<b>9:00</b>	Ask This Old House	This Old House	Craftsman's Legacy	Ask This Old House	Craftsman's Legacy	This Old House
<b>9:30</b>	Rick Steves' Europe	Globe Trekker	Travelscope	Rick Steves' Europe	Travelscope	Globe Trekker
<b>10:00</b>	Dream of Italy		Places to Love	Dream of Italy	Places to Love; begins 11/29: Beyond Your Backyard	
<b>10:30</b>	Martha Stewart's Cooking School	Lidia's Kitchen	Martha Stewart's Cooking School	Lidia's Kitchen	Martha Stewart's Cooking School	Lidia's Kitchen
<b>11:00</b>	America's Test Kitchen	Cook's Country	America's Test Kitchen	Cook's Country	America's Test Kitchen	Cook's Country
<b>11:30</b>	Food Flirts	Simply Ming	Pati's Mexican Table	Food Flirts	Pati's Mexican Table	Simply Ming
<b>12:00</b>	New Scandinavian Cooking	Ellie's Real Good Food	Taste of Louisiana	New Scandinavian Cooking	Taste of Louisiana	Ellie's Real Good Food
<b>12:30 am</b>	Fringe Benefits	Travels to the Edge	Rudy Maxa's World	Fringe Benefits	Rudy Maxa's World	Travels to the Edge
<b>1:00-4:30</b>	Repeat of 7–10:30 p.m. programming.					



Native American Heritage is one of the programming themes for November. Also of note: A World War II marathon of programs will be held Veterans Day Weekend (November 10 and 11).

Air dates and times for Nine World's schedule is accessible from our home page, [nineNet.org](http://nineNet.org). Scroll to "Today's TV Schedule," and change the current channel to KETC World.



## On a Knife Edge

This coming-of-age story traces George Dull Knife's (a Lakota teenager growing up on South Dakota's Pine Ridge Reservation) path to activism. He focuses on shutting down the liquor stores in Whiteclay, a tiny town nearby that exists only to sell beer to the reservation's vulnerable population. With 5 million cans sold a year, the devastating results include public drunkenness and violence.

*Tuesday, November 6, 7:00 p.m.*

## Island Soldier

Through the personal journeys undertaken by Pacific Islander soldiers, the film illustrates a larger story of a remote region whose interests are caught in the ever-changing tides of international politics. *Island Soldier* asks challenging questions while offering viewers a unique perspective on a globalized world. Who are these virtually unknown foreign soldiers fighting America's wars?

*Tuesday, November 13, 7:00 p.m.*



## nine create

New Seasons in November	Weekend Marathons	
<b>Cook's County</b> November 2	November 3 & 4	Celebrate Nancy
<b>Make 48</b> November 4		
<b>Sara's Weeknight Meals</b> November 12	November 10 & 11	Milk Street Food Fest
<b>Growing a Greener World</b> November 15	November 17 & 18	Thank-full
<b>Joseph Rosendo's Travelscope</b> November 26		
<b>Beyond Your Backyard</b> November 29	November 24 & 25	Which Sandwich?

Weekend marathons air Saturdays 5-11:30 am & 5-11 pm, Sunday 11-5 pm. For Saturdays, noon-4:30 pm, and the second month Create schedule, consult TV schedule on [nineNet.org](http://nineNet.org).

5:00	Fetch! with Ruff Ruffman	am
5:30	Cyberchase	
6:00	Cyberchase	
6:30	WordGirl	
7:00	Arthur	
7:30	Arthur	
8:00	The Cat in the Hat Knows a Lot about That!	
8:30	Sesame Street	
9:00	Peg + Cat	
9:30	Super Why!	
10:00	Clifford the Big Red Dog	
10:30	Caillou	
11:00	Sid the Science Kid	
11:30	WordWorld	
12:00	Peep and the Big Wide World	pm
12:30	Super Why!	
1:00	Sesame Street	
1:30	Dinosaur Train	
2:00	Dinosaur Train	
2:30	Splash and Bubbles	
3:00	Daniel Tiger's Neighborhood	
3:30	Daniel Tiger's Neighborhood	
4:00	Pinkalicious and Peterrific	
4:30	Ready Jet Go!	
5:00	Nature Cat	
5:30	Nature Cat	
6:00	Wild Kratts	
6:30	Wild Kratts	
7:00	Odd Squad	
7:30	Odd Squad	
8:00	Arthur	
8:30	Arthur	
9:00	Sesame Street	
9:30	Dinosaur Train	
10:00	Dinosaur Train	
10:30	Splash and Bubbles	
11:00	Daniel Tiger's Neighborhood	
11:30	Daniel Tiger's Neighborhood	
12:00	Pinkalicious and Peterrific	am
12:30	Ready Jet Go!	
1:00	Nature Cat	
1:30	Nature Cat	
2:00	Wild Kratts	
2:30	Wild Kratts	
3:00	Odd Squad	
3:30	Odd Squad	
4:00	Arthur	
4:30	Arthur	

# december

## PROGRAM LISTINGS

Programs preempted for Membership Drive:  
Dec. 3–7, 12:30–2:30 pm.

Holiday programming preempts regular  
schedule on Dec. 10, 14, 7–11 am and 3–5 pm.;  
Dec. 17, 11 am–noon; Dec. 18, 6:30–7:30 am  
and 2:30–3:30 pm; Dec. 19, 7:30–8:30 am,  
Dec. 20, 8–9 am; Dec. 21, 4–5 pm. Dec. 24  
& 25, 7–10:30 am; Dec. 25, 11 am–5 pm.

December primetime grid on page 35.

For program updates, visit [nineNet.org](http://nineNet.org).

### Listings Key

(9) ..... Nine Network production

(PB) ... Program contains  
pledge breaks

nine	PBS	OVER THE AIR 9.1	CHARTER DIGITAL CABLE 709
nine	PBS kids	9.2	183
nine	WORLD	9.3	185
nine	create	9.4	184

Dish Network and Direct TV carry only Nine PBS on,  
respectively, channel 8596 and 0009 (HD on 887).  
U-verse carries only Nine PBS on channel 9 or 1009 (HD).

WEEKDAYS					
	Monday	Tuesday	Wednesday	Thursday	Friday
5:00			Rick Steves' Europe		
5:30			Classical Stretch		
6:00			BBC World News		
6:30			Wild Kratts		
7:00			Nature Cat		
7:30			Curious George		
8:00			Let's Go Luna!		
8:30			Daniel Tiger's Neighborhood		
9:30			Pinkalicious & Peterrific		
10:00			Sesame Street		
10:30			Splash and Bubbles		
11:00			Dinosaur Train		
11:30			Cat and the Hat Knows A Lot about That		
12:00			Sesame Street		
12:30	Mister Rogers' Neighborhood	Daniel Tiger's Neighborhood	Clifford the Big Red Dog	Sid the Science Kid	Splash and Bubbles
1:00	Project Smoke	America's Test Kitchen	Martha Bakes	Simply Ming	Lidia's Kitchen
1:30		Living St. Louis		Taste of Malaysia	
2:00	Finding Your Roots	tasteMAKERS	We'll Meet Again	Kevin Belton's New Orleans	Great British Baking Show
2:30			Wild Kratts		
3:30			Odd Squad		
4:30			Arthur		
5:30			BBC World News America		
6:00			PBS NewsHour		



### Great Performances: Michael Buble: Tour Stop 148

A front row seat to the superstar's phenomenally successful, sold-out, 2015 To Be Loved Tour, which was seen globally by over two million fans.

*Saturday, December 1, 8:30 p.m.*



## SAT | DEC 1

### morning

- 5:00 Rick Steves' Europe
- 5:30 Travelscope
- 6:00 Sesame Street
- 6:30 Daniel Tiger's Neighborhood
- 7:00 Pinkalicious & Peterrific
- 7:30 Curious George
- 8:00 Memory Rescue with Daniel Amen, MD (PB)
- 10:00 10-Day Belly Slimdown with Dr. Kellyann (PB)
- 11:30 Ric Edelman—Mind over Money (PB)

### afternoon

- 1:00 How to Be a Breadhead: A Beginner's Guide to Baking
- 2:30 The Everly Brothers: Harmonies from Heaven  
A documentary about the great harmony duo. (PB)
- 4:00 Chet Atkins: Certified Guitar Player (PB)
- 5:30 Frank Sinatra: The Voice of Our Time (PB)

### evening

- 7:00 Peter, Paul, and Mary at Newport 1963-65  
The trio's performances at the folk festival. (PB)
- 8:30 Great Performances: Michael Buble: Tour Stop 148  
Docu-style film featuring performances from world tour. (PB)
- 10:00 My Music: 70's Soul Superstars  
The biggest names in R&B, soul, disco and funk. (PB)

### late night

- 12:30 Feel Better Fast and Make It Last with Dr. Daniel Amen (PB)
- 2:30 Antiques Roadshow (PB)
- 4:00 Mindfulness Goes Mainstream (PB)

## SUN | DEC 2

### morning

- 5:00 Rick Steves' Europe
- 5:30 Curious Traveler
- 6:00 Sesame Street
- 6:30 Daniel Tiger's Neighborhood
- 7:00 Pinkalicious & Peterrific
- 7:30 Curious George
- 8:00 Food: What the Heck Should I Eat? with Mark Hyman, MD (PB)
- 10:00 Super Woman Rx with Dr. Taz (PB)
- 11:30 Aging Backwards 2 with Miranda Esmonde-White (PB)

### afternoon

- 12:30 Rick Steves Marathon (PB)
- 2:30 The World's Greatest Fair  
Stories about the 1904 World's Fair in St. Louis. (PB)
- 5:30 Rivertowns: 100 Miles, 200 Years, Countless Stories  
How the Missouri River Valley has influenced the country. (9) (PB)

### evening

- 7:00 Neil Diamond: Hot August Night III  
A 2012 performance at Los Angeles' Greek Theatre. (PB)
- 8:30 The Carpenters: Close to You & Christmas Memories (PB)
- 10:30 The Grateful Dead: Downhill from Here  
One of the pinnacles of their last tour. (PB)

### late night

- 12:30 Suze Orman's Financial Solutions for You (PB)
- 2:30 3 Steps to Incredible Health! with Dr. Joel Fuhrman (PB)
- 4:30 Rick Steves Festive Europe (PB)

## MON | DEC 3

### evening

- 7:00 Antiques Roadshow (PB)
- 8:30 The Bee Gees: One Night Only  
A 1997 concert at the MGM Grand in Las Vegas. (PB)
- 10:00 Neil Diamond: Hot August Night III  
A 2012 performance at Los Angeles' Greek Theatre. (PB)
- 11:30 Jesse Cook: One Night at the Metropolis  
Canadian guitar virtuoso performs. (PB)

### late night

- 1:00 BBC World News
- 1:30 Amanpour and Company
- 2:30 NHK Newsline
- 3:00 Smart Travels
- 3:30 A Craftsman's Legacy
- 4:00 Rare Visions & Roadside Revelations
- 4:30 Travelscope

## TUE | DEC 4

### evening

- 7:00 JFK: The Lost Inaugural Gala  
A window into the glamour of the 1961 inauguration. (PB)
- 8:30 Tommy Emmanuel: Center Stage  
A performance by the Australian musician. (PB)
- 10:00 3 Steps to Incredible Health! with Dr. Joel Fuhrman  
Steps to prevent disease. (PB)

### late night

- 12:00 Wish You Were Here! A Century of Missouri State Parks  
Uncover the beauty of one of America's oldest state park systems. (9) (PB)
- 1:00 BBC World News
- 2:30 NHK Newsline
- 3:00 Smart Travels
- 3:30 A Craftsman's Legacy
- 4:00 Rare Visions & Roadside Revelations
- 4:30 Travelscope

## WED | DEC 5

### evening

- 7:00 Brain Secrets with Dr. Michael Merzenich  
How to improve and maintain cognitive fitness. (PB)
- 8:30 Concert for George  
A tribute to George Harrison. (PB)
- 11:00 Grateful Dead: Downhill from Here  
A performance at Alpine Valley Music Theatre in WI. (PB)

### late night

- 1:00 BBC World News
- 1:30 Amanpour and Company
- 2:30 NHK Newsline
- 3:00 Smart Travels
- 3:30 A Craftsman's Legacy
- 4:00 Rare Visions & Roadside Revelations
- 4:30 Travelscope

## THU | DEC 6

### evening

- 7:00 Donnybrook
- 8:00 Ed Sullivan's Rock and Roll Classics: The Sixties  
Some of the greatest performances of the 1960s. (PB)
- 10:00 Roy Orbison Black and White Night 30  
A concert special and mini-documentary. (PB)
- 11:30 Feel Better Fast and Make It Last with Dr. Daniel Amen (PB)  
How to overcome negativity, anxiety and anger. (PB)

### late night

- 1:00 BBC World News
- 1:30 Amanpour and Company
- 2:30 NHK Newsline
- 3:00 Smart Travels
- 3:30 A Craftsman's Legacy
- 4:00 Rare Visions & Roadside Revelations
- 4:30 Travelscope

## The First Silent Night

For close to 200 years, the carol has occupied the heart of celebrations across the world. Uncover the moving origins of Silent Night as you journey to the Austrian village of Oberndorf as well the city of Salzburg, where the story of the world's favorite carol has its origins.

*Tuesday, December 11, 8:00 p.m.*



## FRI | DEC 7

### evening

- 7:00 **Washington Week**
- 7:30 **Donnybrook (9)**
- 8:00 **Ric Edelman—Mind over Money**  
How emotions keep you from reaching your financial goals. (PB)
- 9:30 **Rivertowns: 100 Miles, 200 Years, Countless Stories**  
The historical significance of the Missouri River Valley. (9) (PB)
- 11:00 **The Highwaymen: Live at Nassau Coliseum**
- late night
- 12:30 **Rick Steves' Festive Europe**
- 1:00 **BBC World News**
- 1:30 **Amanpour and Company**
- 2:30 **NHK Newsline**
- 3:00 **Rick Steves' European Christmas**

## SAT | DEC 8

### morning

- 5:00 **Rick Steves' Europe**
- 5:30 **Travelscope**
- 6:00 **Sesame Street**
- 6:30 **Daniel Tiger's Neighborhood**
- 7:00 **Pinkalicious & Peterrific**
- 7:30 **Curious George**
- 8:00 **Member Favorites**  
PBS KIDS is committed to helping all children reach their full potential. Join at [nineNet.org/support](http://nineNet.org/support). (PB)

### afternoon

- 12:00 **Member Favorites**  
The services we provide cannot be replaced by commercial media. (PB)
- 4:00 **Member Favorites**  
PBS Digital Studios produces original content exclusively for digital platforms. Support public media at [nineNet.org/support](http://nineNet.org/support). (PB)
- 6:00 **Member Favorites**  
For 15 consecutive years, a national study has rated PBS as the most-trusted institution in America. (PB)

### evening

- 8:00 **Member Favorites**  
We are committed to using the power of public media to spark learning. Your support makes it possible. (PB)
- 10:00 **Member Favorites**  
We treat people as citizens, not consumers. Support Nine Network today at [nineNet.org/support](http://nineNet.org/support). (PB)

### late night

- 1:00 **Member Favorites (PB)**
- 3:00 **Smart Travels**
- 3:30 **A Craftsman's Legacy**
- 4:00 **Rare Visions & Roadside Revelations**
- 4:30 **Travelscope**

## SUN | DEC 9

### morning

- 5:00 **Rick Steves' Europe**
- 5:30 **Curious Traveler**
- 6:00 **Sesame Street**

- 6:30 **Daniel Tiger's Neighborhood**

- 7:00 **Pinkalicious & Peterrific**

- 7:30 **Curious George**

- 8:00 **Member Favorites**  
PBS KIDS is a leading resource for educational programming. Join at [nineNet.org/support](http://nineNet.org/support). (PB)

### afternoon

- 12:00 **Member Favorites**  
We don't trade educational for entertaining. (PB)
- 2:00 **Member Favorites**  
PBS stations reach more moms with young children than any other kids TV network. (PB)
- 6:00 **Member Favorites (PB)**

### evening

- 8:00 **Member Favorites**  
Discover the worlds of art, science and nature—commercial-free. (PB)
- 10:00 **Member Favorites**  
We are committed to using the power of public media to spark learning. Your support makes it possible. (PB)

### late night

- 1:00 **Member Favorites**  
For 15 consecutive years, a national study has rated PBS as the most-trusted institution in America. (PB)
- 3:00 **Member Favorites**  
The services we provide cannot be replaced by commercial media. (PB)



## MON | DEC 10

### evening

- 7:00 **Antiques Roadshow**  
A Pablo Picasso linocut.
- 8:00 **Living St. Louis (9)**  
The stories and people of the region. (9)
- 8:30 **tasteMAKERS: Extracted**  
Unrefined oils are one of the most sought-out ingredients.
- 9:00 **Antiques Roadshow**  
Julia Child's copper pans.
- 10:00 **Sacred**  
The daily use of faith and spiritual practice.
- 11:30 **BBC World News**

### late night

- 12:00 **Amanpour and Company**
- 1:00 **American Originals: Made on Main Street**
- 2:00 **Living St. Louis (9)**
- 2:30 **tasteMAKERS: Extracted**
- 3:00 **Smart Travels**
- 3:30 **A Craftsman's Legacy**
- 4:00 **Rare Visions & Roadside Revelations**
- 4:30 **Travelscope**

## TUE | DEC 11

### evening

- 7:00 **JFK—The Last Speech**  
Amherst address reinforces national service and the importance of the arts.
- 8:00 **First Silent Night**  
The creation of the world's most popular carol.
- 9:00 **Letters from Baghdad**  
How Gertrude Bell shaped the destiny of Iraq.
- 10:30 **Missouri Life**
- 11:00 **BBC World News**
- 11:30 **Amanpour and Company**

### late night

- 12:30 **NHK Newslines**
- 1:00 **Antiques Roadshow**
- 2:00 **Antiques Roadshow**
- 3:00 **Smart Travels**
- 3:30 **A Craftsman's Legacy**
- 4:00 **Rare Visions & Roadside Revelations**
- 4:30 **Travelscope**

## WED | DEC 12

### evening

- 7:00 **Nature: Miracle Orphans: Wild Lessons**  
A baby sloth and young kangaroo.
- 8:00 **Nova: Ultimate Cruise Ship**  
The Seven Seas Explorer is profiled.

- 9:00 **Good Work: Masters of the Building Arts**  
Celebrate American craftsmanship and unsung artisans.
- 10:00 **Rick Steves Special: European Christmas**  
Discover holiday family traditions.
- 11:00 **BBC World News**
- 11:30 **Amanpour and Company**

### late night

- 12:30 **NHK Newslines**
- 1:00 **Nature: Miracle Orphans: Wild Lessons**
- 2:00 **Nova: Ultimate Cruise Ship**
- 3:00 **Smart Travels**
- 3:30 **A Craftsman's Legacy**
- 4:00 **Rare Visions & Roadside Revelations**
- 4:30 **Travelscope**

## THU | DEC 13

### evening

- 7:00 **Donnybrook (9)**
- 7:30 **Donnybrook...Your Turn (9)**
- 8:00 **Doc Martin**  
An encore of Season 7 begins with two back-to-back episodes.
- 9:30 **Missouri Life**
- 10:00 **tasteMAKERS: Extracted**
- 10:30 **Living St. Louis**  
The stories and people of the region. (9)
- 11:00 **BBC World News**
- 11:30 **Amanpour and Company**

### late night

- 12:30 **NHK Newslines**
- 1:00 **Letters from Baghdad**
- 2:30 **Living St. Louis (9)**
- 3:00 **Smart Travels**
- 3:30 **A Craftsman's Legacy**
- 4:00 **Rare Visions & Roadside Revelations**
- 4:30 **Travelscope**

## FRI | DEC 14

### evening

- 7:00 **Washington Week**
- 7:30 **Donnybrook (9)**
- 8:00 **Father Brown**  
Margaret is pinned beneath a shelving unit.
- 9:00 **Midsomer Murders: The Glitch**  
A scientist discovers a fatal flaw in a prevailing theory.
- 10:35 **The Cafe**
- 11:00 **BBC World News**
- 11:30 **Amanpour and Company**

### late night

- 12:30 **NHK Newslines**
- 1:00 **Donnybrook (9)**
- 1:30 **Donnybrook...Your Turn (9)**
- 2:00 **Living St. Louis (9)**
- 2:30 **tasteMAKERS**
- 3:00 **Smart Travels**
- 3:30 **A Craftsman's Legacy**
- 4:00 **Rare Visions & Roadside Revelations**
- 4:30 **Travelscope**

## SAT | DEC 15

### morning

- 5:00 **Rick Steves' Europe**
- 5:30 **Travelscope**
- 6:00 **Sesame Street**
- 6:30 **Daniel Tiger's Neighborhood**
- 7:00 **Pinkalicious & Peterrific**
- 7:30 **Curious George**
- 8:00 **Let's Go Luna!**
- 8:30 **Nature Cat**
- 9:00 **Ready Jet Go!**
- 9:30 **Beyond Your Backyard**
- 10:00 **Martha Stewart's Cooking School**
- 10:30 **Pati's Mexican Table**
- 11:00 **Feast TV: Good Eggs**
- 11:30 **tasteMAKERS: Extracted**

### afternoon

- 12:00 **Milk Street Television**  
Fennel-rosemary porchetta.
- 12:30 **Sara's Weeknight Meals**  
the aperitif, limoncello.
- 1:00 **America's Test Kitchen**  
Linguine allo scoglio.
- 1:30 **Cook's Country**
- 2:00 **Lidia's Kitchen**  
Campanelle with shrimp and fennel.
- 2:30 **Moveable Feast**  
Pavlova with blueberries and dried fruit.
- 3:00 **Living St. Louis**  
The stories and people of the region. (9)
- 3:30 **tasteMAKERS: Extracted**
- 4:00 **Tending Nature**  
A northeast CA tribe is reviving traditional hunting.
- 4:30 **Beyond Your Backyard**  
The best beaches in the Bahamas.
- 5:00 **This Old House**
- 5:30 **Ask This Old House**
- 6:00 **PBS NewsHour Weekend**
- 6:30 **tasteMAKERS: Extracted**

## America's Test Kitchen Special: Home for the Holidays

The entire cast is home for the holidays, and they're sharing their tips and tricks for planning a stress-free gathering, while also recounting personal holiday memories and revealing their all-time favorite holiday recipes from the *Test Kitchen* archives.

Monday, December 17, 9:00 p.m.  
(repeats December 22, 1:00 p.m.)



### evening

- 7:00 **Antiques Roadshow**  
Italian carved door panels.
- 8:00 **Death in Paradise**  
Jack is embroiled in the world of faith healing.
- 9:00 **Movie: Places in the Heart**  
(1984) A widowed mother fights for her cotton farm. (1 hr, 53 min)
- 11:00 **Austin City Limits**  
Khalid and Mac DeMarco.

### late night

- 12:00 **Nova: Ultimate Cruise Ship**
- 1:00 **Nature: Miracle Orphans**
- 2:00 **Impossible Builds**
- 3:00 **Smart Travels**
- 3:30 **A Craftsman's Legacy**
- 4:00 **Rare Visions & Roadside Revelations**
- 4:30 **Travelscope**

## SUN | DEC 16

### morning

- 5:00 **Rick Steves' Europe**
- 5:30 **Curious Traveler**
- 6:00 **Sesame Street**
- 6:30 **Daniel Tiger's Neighborhood**
- 7:00 **Pinkalicious & Peterrific**
- 7:30 **Curious George**
- 8:00 **Let's Go Luna!**  
Christmas around the World
- 9:00 **Ready Jet Go!**
- 9:30 **Living St. Louis (9)**
- 10:00 **Heirloom Meals Christmas**

Paying tribute to the dying art of cooking from scratch.

- 11:00 **Rick Steves Special: European Christmas**  
Customs from the "old countries."

### afternoon

- 12:00 **Father Brown**  
Mrs. McCarthy's daughter Joselyn visits.
- 1:00 **Downton Abbey, Season 5**
- 2:00 **Great Performances at the Met: Luisa Miller**
- 4:30 **K.D. Lang-Landmarks Live in Concert**  
A Great Performances special.
- 6:00 **PBS NewsHour Weekend**
- 6:30 **tasteMAKERS: Extracted**

### evening

- 7:00 **Little Women**  
(1 of 3) Father is away at war.
- 8:00 **Victoria, Season 2**  
An encore of Season 2 begins.
- 10:00 **Movie: Places in the Heart**  
(1984) A widowed mother fights for her cotton farm. (1 hr, 53 min)

### late night

- 12:00 **K.D. Lang-Landmarks Live in Concert**
- 1:30 **Sacred**
- 3:00 **Smart Travels**
- 3:30 **A Craftsman's Legacy**
- 4:00 **Rare Visions & Roadside Revelations**
- 4:30 **Travelscope**

## MON | DEC 17

### evening

- 7:00 **Antiques Roadshow**
- 8:00 **Living St. Louis**  
The stories and people of the region. (9)
- 8:30 **tasteMAKERS: Warm & Woolly**  
Neville visits Green Dirt Farms in Weston, MO.
- 9:00 **America's Test Kitchen Special: Home for the Holidays**  
Tips and tricks for planning a stress-free gathering.
- 10:00 **Independent Lens: Man on Fire**  
An elderly Texas minister sets himself on fire as a protest.
- 11:00 **BBC World News**
- 11:30 **Amanpour and Company**

### late night

- 12:30 **NHK Newslines**
- 1:00 **Victoria, Season 2**
- 3:00 **Smart Travels**
- 3:30 **A Craftsman's Legacy**
- 4:00 **Rare Visions & Roadside Revelations**
- 4:30 **Travelscope**

## TUE | DEC 18

### evening

- 7:00 **We'll Meet Again**  
The Great Alaskan Earthquake.
- 8:00 **Christmas with the Mormon Tabernacle Choir**  
Audra McDonald and Peter Graves join the annual concert.
- 9:00 **Lidia Celebrates America**  
A heartland holiday feast.



10:00 **Real Rail Adventures: Swiss Winter Magic**  
The visual splendors of the Swiss rail system.

11:00 **BBC World News**

11:30 **Amanpour and Company**

**late night**

12:30 **NHK Newslines**

1:00 **Antiques Roadshow**

2:00 **Living St. Louis (9)**

2:30 **tasteMAKERS: Warm & Wooly**

3:00 **Smart Travels**

3:30 **A Craftsman's Legacy**

4:00 **Rare Visions & Roadside Revelations**

4:30 **Travelscope**

## WED | DEC 19

**evening**

7:00 **Nature: Mystery Monkeys of Shangri-La**  
The recently discovered snub-nosed monkey.

8:00 **Nova: Ghosts of Stonehenge**  
New clues about Britain's 5,000-year-old site.

9:00 **Andes: Kingdoms of the Sky**  
The natural life found in the world's longest mountain range.

10:00 **Dreaming of a Jewish Christmas**  
The story of Jewish immigrants who wrote popular Christmas music.

11:00 **BBC World News**

11:30 **Amanpour and Company**

**late night**

12:30 **NHK Newslines**

1:00 **Nature: Mystery Monkeys of Shangri-La**

2:00 **Nova: Ghosts of Stonehenge**

3:00 **Smart Travels**

3:30 **A Craftsman's Legacy**

4:00 **Rare Visions & Roadside Revelations**

4:30 **Travelscope**

## THU | DEC 20

**evening**

7:00 **Donnybrook (9)**

7:30 **Donnybrook...Your Turn (9)**

8:00 **Doc Martin**  
Louisa meets Martin's therapist.

9:30 **Missouri Life**

10:00 **tasteMAKERS: Warm & Wooly**

10:30 **Living St. Louis (9)**

11:00 **BBC World News**

11:30 **Amanpour and Company**

**late night**

12:30 **NHK Newslines**

1:00 **We'll Meet Again**

2:00 **Christmas with the Mormon Tabernacle Choir**

3:00 **Smart Travels**

3:30 **A Craftsman's Legacy**

4:00 **Rare Visions & Roadside Revelations**

4:30 **Travelscope**

## FRI | DEC 21

**evening**

7:00 **Washington Week**

7:30 **Donnybrook (9)**

8:00 **Father Brown**  
An absent-minded professor goes missing.

9:00 **Midsomer Murders: Small Mercies**  
A murder in the Little Worthy tourist village.

10:35 **The Cafe**

11:00 **BBC World News**

11:30 **Amanpour and Company**

**late night**

12:30 **NHK Newslines**

1:00 **Donnybrook (9)**

1:30 **Donnybrook...Your Turn (9)**

2:00 **Living St. Louis (9)**

2:30 **tasteMAKERS: Warm & Wooly**

3:00 **Smart Travels**

3:30 **A Craftsman's Legacy**

4:00 **Rare Visions & Roadside Revelations**

4:30 **Travelscope**

## SAT | DEC 22

**morning**

5:00 **Rick Steves' Europe**

5:30 **Travelscope**

6:00 **Sesame Street**

6:30 **Daniel Tiger's Neighborhood**

7:00 **Pinkalicious & Peterrific**

7:30 **Curious George: A Very Monkey Christmas**

8:30 **Let's Go Luna!: Christmas around the World**

9:30 **Beyond Your Backyard**

10:00 **Martha Stewart's Cooking School**

10:30 **Pati's Mexican Table**

11:00 **Feast TV: Go East**

11:30 **tasteMAKERS: Warm & Wooly**

**afternoon**

12:00 **Milk Street Television**  
Za'atar-roasted chicken.

12:30 **Sara's Weeknight Meals**  
Classic tapas.

1:00 **America's Test Kitchen Special:**



### Dreaming of a Jewish Christmas

The irreverent documentary tells the story of the unlikely Jewish immigrants who, enamored with Broadway and Hollywood, wrote some of the most popular songs in America: Christmas music. It features rarely-seen archival footage, musical performances and interviews.

*Wednesday, December 19, 10:00 p.m.  
(repeats December 24, 10:00 p.m.)*

### Home for the Holidays

New twists on classic holiday fare.

2:00 **Lidia Celebrates America**

3:00 **Living St. Louis (9)**

3:30 **tasteMAKERS: Warm & Wooly**

4:00 **The Great British Baking Show: Christmas Masterclass**

5:00 **This Old House**

5:30 **Ask This Old House**

6:00 **PBS NewsHour Weekend**

6:30 **tasteMAKERS: Warm & Wooly**

**evening**

7:00 **Antiques Roadshow**

8:00 **Death in Paradise**  
The team navigates the Yacht Club to catch a killer

9:00 **Bob Hope: American Masters**  
Writings voiced by Billy Crystal.

11:00 **Austin City Limits**  
Tom Waits performs in this classic episode from 1979.

**late night**

- 12:00 Nova: Ghosts of Stonehenge
- 1:00 Nature: Mystery Monkeys of Shangri-La
- 2:00 Independent Lens: Man on Fire
- 3:00 Smart Travels
- 3:30 A Craftsman's Legacy
- 4:00 Rare Visions & Roadside Revelations
- 4:30 Travelscope

## SUN | DEC 23

### morning

- 5:00 Rick Steves' Europe
- 5:30 Curious Traveler
- 6:00 Sesame Street
- 6:30 Daniel Tiger's Neighborhood
- 7:00 Pinkalicious & Peterrific
- 7:30 Curious George
- 8:00 Let's Go Luna!
- 8:30 Nature Cat
- 9:00 Ready Jet Go!
- 9:30 Living St. Louis (9)
- 10:00 tasteMAKERS: Extracted
- 10:30 America's Test Kitchen Special: Home for the Holidays
- 11:30 Missouri Life

### afternoon

- 12:00 Father Brown
- 1:00 Downton Abbey, Season 5
- 2:00 Craft in America  
Explore craft practices definitively Californian.
- 3:00 Craft in America  
Visionary artists, curators and collectors.
- 4:00 Christmas at St. Olaf  
Festive gospel music.
- 5:00 Christmas with the Mormon Tabernacle Choir
- 6:00 PBS NewsHour Weekend
- 6:30 tasteMAKERS: Warm & Wooly

### evening

- 7:00 Little Women  
(2 of 3) Mr. March falls ill.
- 8:00 Victoria, Season 2
- 10:00 Bob Hope: American Masters  
Interviews with Margaret Cho and Conan O'Brien.
- late night
- 12:00 Craft in America
- 1:00 Craft in America
- 2:00 America's Test Kitchen Special: Home for the Holidays
- 3:00 Smart Travels
- 3:30 A Craftsman's Legacy
- 4:00 Rare Visions & Roadside Revelations
- 4:30 Travelscope

## MON | DEC 24

### evening

- 7:00 Antiques Roadshow  
Items guests received as presents.
- 8:00 Christmas with the Mormon Tabernacle Choir  
Audra McDonald and Peter Graves sing African-American spirituals.
- 9:00 Christmas at St. Olaf  
Festive gospel music.
- 10:00 Dreaming of a Jewish Christmas  
An irreverent documentary about Jewish immigrants who wrote Christmas music.
- 11:00 BBC World News
- 11:30 Amanpour and Company
- late night
- 12:30 NHK Newline
- 1:00 Victoria, Season 2
- 3:00 Smart Travels
- 3:30 A Craftsman's Legacy
- 4:00 Rare Visions & Roadside Revelations
- 4:30 Travelscope

## TUE | DEC 25

### evening

- 7:00 We'll Meet Again
- 8:00 Call the Midwife Holiday Special
- 9:30 Christmas with the Mormon Tabernacle Choir  
Featuring Tony winners, Audra McDonald and Peter Graves.
- 10:30 Rick Steves Special: European Christmas
- 11:30 Amanpour and Company
- late night
- 12:30 NHK Newline
- 1:00 Christmas with the Mormon Tabernacle Choir
- 2:00 Christmas at St. Olaf
- 3:00 Smart Travels
- 3:30 A Craftsman's Legacy
- 4:00 Rare Visions & Roadside Revelations
- 4:30 Travelscope

## WED | DEC 26

### evening

- 7:00 Nature: H Is for Hawk: A New Chapter  
Training a goshawk.
- 8:00 Nova: Apollo's Daring Mission
- 9:00 Tesla: American Experience  
Meet Nikola Tesla, the genius engineer and inventor.
- 10:00 Walking the Camino: Six Ways to Santiago  
Six modern-day pilgrims triumph over their doubts.
- 11:00 BBC World News
- 11:30 Amanpour and Company

### late night

- 12:30 NHK Newline
- 1:00 Nature: H Is for Hawk: A New Chapter
- 2:00 Nova: Apollo's Daring Mission
- 3:00 Smart Travels
- 3:30 A Craftsman's Legacy
- 4:00 Rare Visions & Roadside Revelations
- 4:30 Travelscope

## THU | DEC 27

### evening

- 7:00 Donnybrook (9)
- 7:30 Donnybrook...Your Turn (9)
- 8:00 Doc Martin Marathon  
Get set for a new season of Doc Martin with final episodes of the previous season.
- 11:30 Amanpour and Company
- late night
- 12:30 NHK Newline
- 1:00 We'll Meet Again
- 2:00 Call the Midwife Holiday Special
- 3:30 A Craftsman's Legacy
- 4:00 Rare Visions & Roadside Revelations
- 4:30 Travelscope

## FRI | DEC 28

### evening

- 7:00 Washington Week
- 7:30 Donnybrook
- 8:00 Father Brown  
A judicial appointee is killed.
- 9:00 Midsomer Murders: The Creeper  
Barnaby tries to catch a cat burglar.
- 10:35 The Cafe
- 11:00 BBC World News
- 11:30 Amanpour and Company
- late night
- 12:30 NHK Newline
- 1:00 Donnybrook (9)
- 1:30 Donnybrook...Your Turn (9)
- 2:00 Tesla: American Experience
- 3:00 Smart Travels
- 3:30 A Craftsman's Legacy
- 4:00 Rare Visions & Roadside Revelations
- 4:30 Travelscope

## SAT | DEC 29

### morning

- 5:00 Rick Steves' Europe
- 5:30 Travelscope
- 6:00 Sesame Street
- 6:30 Daniel Tiger's Neighborhood





## Great Performances: Leonard Bernstein Centennial Celebration at Tanglewood

Celebrate the legendary composer and conductor with the Boston Symphony Orchestra at Tanglewood. John Williams and Michael Tilson Thomas conduct. Audra McDonald hosts. Yo-Yo Ma, Susan Graham, Thomas Hampson, Midori and others perform.

*Sunday, December 30, 3:00 p.m. (repeats at midnight and December 31, 9:00 p.m.)*

## MON | DEC 31

### evening

- 7:00 **Antiques Roadshow**  
NASA photos.
- 8:00 **Austin City Limits Hall of Fame New Year's Eve**
- 9:00 **Great Performances: Leonard Bernstein Centennial Celebration at Tanglewood**  
A tribute to his many contributions to music and theater.
- 11:30 **Amanpour and Company**

### late night

- 12:30 **NHK Newslines**
- 1:00 **Victoria, Season 2**
- 3:00 **Smart Travels**
- 3:30 **A Craftsman's Legacy**
- 4:00 **Rare Visions & Roadside Revelations**
- 4:30 **Travelscope**

## SUN | DEC 30

### morning

- 5:00 **Rick Steves' Europe**
- 5:30 **Curious Traveler**
- 6:00 **Sesame Street**
- 6:30 **Daniel Tiger's Neighborhood**
- 7:00 **Pinkalicious & Peterrific**
- 7:30 **Curious George**
- 8:00 **Let's Go Luna!**
- 8:30 **Nature Cat**
- 9:00 **Ready Jet Go!**
- 9:30 **Missouri Life**
- 10:00 **tasteMAKERS: Warm & Wooly**
- 10:30 **Amazing Grace**  
Grace Day blazed a path for future women lawyers.
- 11:00 **Let's Have Some Church Detroit Style**  
Follow choir members and the convictions that sustain them.

### afternoon

- 12:00 **Father Brown**
- 1:00 **Downton Abbey, Season 5**
- 2:00 **Little Women**  
An encore of Part 1.
- 3:00 **Great Performances: Leonard Bernstein Centennial Celebration at Tanglewood**
- 5:30 **Miss Springmaid**  
The ad campaign that changed the advertising industry.
- 6:00 **PBS NewsHour Weekend**
- 6:30 **tasteMAKERS: Not So Fast**

### evening

- 7:00 **Little Women**  
(3 of 3) The conclusion of this universal coming of age story.
- 8:00 **Victoria, Season 2**  
Victoria decides to try her hand at foreign relations
- 10:00 **Last Tango in Halifax Holiday Special**  
Alan has a difficult conversation with Gillian.
- 11:00 **Last Tango in Halifax Holiday Special**  
In a twist of fate, Alan is forced to confront his fears.

### late night

- 12:00 **Great Performances: Leonard Bernstein Centennial Celebration at Tanglewood**
- 2:30 **Missouri Life**
- 3:00 **Smart Travels**
- 3:30 **A Craftsman's Legacy**
- 4:00 **Rare Visions & Roadside Revelations**
- 4:30 **Travelscope**

- 7:00 **Pinkalicious & Peterrific**
- 7:30 **Curious George**
- 8:00 **Let's Go Luna!**
- 8:30 **Nature Cat**
- 9:00 **Ready Jet Go!**
- 9:30 **Beyond Your Backyard**
- 10:00 **Martha Stewart's Cooking School**
- 10:30 **Pati's Mexican Table**
- 11:00 **Feast TV: Water World**
- 11:30 **tasteMAKERS: Sweet Stuff**

### afternoon

- 12:00 **Milk Street Television**
- 12:30 **Sara's Weeknight Meals**  
A market tour to gather ingredients for paella.
- 1:00 **America's Test Kitchen**  
Tamales with red chicken chili.
- 1:30 **Cook's Country**  
Fudge cake.
- 2:00 **Lidia's Kitchen**  
Beef and potato goulash.
- 2:30 **Moveable Feast**
- 3:00 **Missouri Life**
- 3:30 **tasteMAKERS: Sweet Stuff**
- 4:00 **Tending Nature**  
Native peoples in rural areas lack access to healthy food.
- 4:30 **Beyond Your Backyard**  
A tour of Washington, DC.
- 5:00 **This Old House**
- 5:30 **Ask This Old House**
- 6:00 **PBS NewsHour Weekend**

### evening

- 7:00 **Antiques Roadshow**  
Items guests received as presents.
- 8:00 **Death in Paradise**  
The leader of a spiritual retreat is found strangled.
- 9:00 **Last Tango in Halifax Holiday Special**  
The family moves to a ramshackle farmhouse.
- 10:00 **Last Tango in Halifax Holiday Special**  
Gillian's son is arrested for assaulting his mother's young lover.
- 11:00 **Austin City Limits**  
Iggy Pop.

### late night

- 12:00 **Nova: Apollo's Daring Mission**
- 1:00 **Nature: H Is for Hawk: A New Chapter**
- 2:00 **Tesla: American Experience**
- 3:00 **Smart Travels**
- 3:30 **A Craftsman's Legacy**
- 4:00 **Rare Visions & Roadside Revelations**
- 4:30 **Travelscope**





# GRAPHIC REVOLUTION

## AMERICAN PRINTS 1960 TO NOW

November 11–February 3, 2019

Members always free. For ticket information, visit [slam.org/graphicrevolution](http://slam.org/graphicrevolution).

### SAINT LOUIS ART MUSEUM

[slam.org/graphicrevolution](http://slam.org/graphicrevolution)

#GraphicRevolution



Organized by the Saint Louis Art Museum with support from The Edward L. Bakewell Jr. Endowment for Special Exhibitions. Financial assistance provided by the Missouri Arts Council, a state agency, the National Endowment for the Arts, the Nestlé Purina PetCare Company, and Leslie Hindman Auctioneers.

Robert Rauschenberg, American, 1925–2008; *Signs* (detail), 1970; hand-painted screenprint; 42 7/8 x 34 inches; Saint Louis Art Museum, Gift of the Honorable and Mrs. Thomas F. Eagleton 311:1986 © Robert Rauschenberg Foundation

Commissioned and ultimately rejected for the cover of *Time* magazine in 1969, Robert Rauschenberg's *Signs* recalls the turmoil and tragedies of the decade. The photomontage of images from newspapers and magazines emphasizes Rauschenberg's concern for the state of American society of that time.



# prime time

**9.1**  
DECEMBER

	7:00	7:30	8:00	8:30	9:00	9:30	10:00	10:30	
SAT 1	Peter, Paul, and Mary at Newport 1963-65			Great Performances: Michael Buble: Tour Stop 148			My Music: 70's Soul Superstars		
SUN 2	Neil Diamond: Hot August Night III			The Carpenters: Close to You & Christmas Memories					The Grateful Dead...
MON 3	Antiques Roadshow			The Bee Gees: One Night Only			Neil Diamond: Hot August Night III		
TUE 4	JFK: The Lost Inaugural Gala			Tommy Emmanuel: Center Stage			3 Steps to Incredible Health!		
WED 5	Brain Secrets with Dr. Michael Merzenich			Concert for George					
THU 6	Donnybrook		Ed Sullivan's Rock and Roll Classics: The Sixties				Roy Orbison Black and White Night 30		
FRI 7	Washington...	Donnybrook	Ric Edelman–Mind over Money			Rivertowns: 100 Miles, 200 Years, Countless Stories			
SAT 8	Member Favorites								
SUN 9	Member Favorites								
MON 10	Antiques Roadshow		Living St. Louis	tasteMAKERS	Antiques Roadshow		Sacred		
TUE 11	JFK—The Last Speech		First Silent Night		Letters from Baghdad			Missouri Life	
WED 12	Nature: Miracle Orphans...		Nova: Ultimate Cruise Ship		Good Work: Masters of the Building...		Rick Steves Special: European...		
THU 13	Donnybrook	...Your Turn	Doc Martin			Missouri Life	tasteMAKERS	Living St. Louis	
FRI 14	Washington...	Donnybrook	Father Brown		Midsomer Murders: The Glitch			The Cafe	
SAT 15	Antiques Roadshow		Death in Paradise		Movie: Places in the Heart				
SUN 16	Little Women		Victoria, Season 2				Movie: Places in the Heart		
MON 17	Antiques Roadshow		Living St. Louis	tasteMAKERS	America's Test Kitchen Special...		Independent Lens: Man on Fire		
TUE 18	We'll Meet Again		Christmas with the Mormon Tabernacle...		Lidia Celebrates America		Real Rail Adventures: Swiss Winter...		
WED 19	Nature: Mystery Monkeys...		Nova: Ghosts of Stonehenge		Andes: Kingdoms of the Sky		Dreaming of a Jewish Christmas		
THU 20	Donnybrook	...Your Turn	Doc Martin			Missouri Life	tasteMAKERS	Living St. Louis	
FRI 21	Washington...	Donnybrook	Father Brown		Midsomer Murders: Small Mercies			The Cafe	
SAT 22	Antiques Roadshow		Death in Paradise		Bob Hope: American Masters				
SUN 23	Little Women		Victoria, Season 2				Bob Hope: American Masters		
MON 24	Antiques Roadshow		Christmas with the Mormon Tabernacle...		Christmas at St. Olaf		Dreaming of a Jewish Christmas		
TUE 25	We'll Meet Again		Call the Midwife Holiday Special			Christmas with the Mormon Tabernacle...		Rick Steves...	
WED 26	Nature: H Is for Hawk...		Nova: Apollo's Daring Mission		Tesla: American Experience		Walking the Camino: Six Ways...		
THU 27	Donnybrook	...Your Turn	Doc Martin Marathon						
FRI 28	Washington...	Donnybrook	Father Brown		Midsomer Murders: The Creeper			The Cafe	
SAT 29	Antiques Roadshow		Death in Paradise		Last Tango in Halifax Holiday Special				
SUN 30	Little Women		Victoria, Season 2				Last Tango in Halifax Holiday Special		
MON 31	Antiques Roadshow		Austin City Limits Hall of Fame New...		Great Performances: Leonard Bernstein Centennial Celebration at Tanglewood				

# repeat schedule

Repeat times for *select* programs in November and December are listed below. Repeats can also be found in our program listings and online schedule at [nineNet.org](http://nineNet.org). Please note that programs listed here can be preempted for special programs, pledge programs, or live events.

**Aging Backwards 2 with Miranda Esmonde-White**  
11/26, midnight

**America's Test Kitchen Special: Home for the Holidays**  
12/22, 1 pm;  
12/23, 10:30 am;  
12/24, 2 am

**Christmas at St. Olaf**  
12/24, 9 pm; 12/26, 2 am

**Christmas with the Mormon Tabernacle Choir**  
12/21, 2 am;  
12/23, 5 pm;  
12/24, 8 pm;  
12/25, 9:30 pm;  
12/26, 1 am

**Donnybrook**  
Most Fridays at 7:30 pm;  
Saturdays at 1 am;  
Sundays at 10:30 am on  
11/4, 11/11, 11/18

**Donnybrook...Your Turn**  
Most Saturdays  
at 1:30 am

**Dreaming of a Jewish Christmas**  
12/24, 10 pm

**The Elephant Man**  
11/4, 10 pm

**Father Brown**  
Sundays at noon on  
11/11, 11/18, 12/16,  
12/23, 12/30

**Feast TV**  
Most Saturdays at 11 am

**Feel Better Fast and Make It Last with Daniel Amen**  
11/24, 3:30 pm

**Frontline**  
Documenting Hate  
Charlottesville:  
11/23, 2am

New American Nazis:  
11/23 and 11/24, 1 am

**Great Performances**  
K.D. Lang-Landmarks  
Live in Concert:  
12/17, midnight

Leonard Bernstein  
Centennial Celebration  
at Tanglewood:  
12/31, midnight, 9 pm

Rodgers & Hammerstein's  
The Sound of Music:  
11/11, 3:30 pm

**Healthy Brain-Happy Life with Dr. Suzuki**  
11/25, 3 am

**Independent Lens**  
Dawnland: 11/9, 1 am;  
11/11, 2 am  
Man on Fire: 12/23, 2 am

**Jamestown**  
11/11, 2:30 pm;  
11/18, 11/25, 2-4 pm

**Julia Louis-Dreyfus: The Mark Twain Prize**  
11/21, 2 am

**Last Tango in Halifax Holiday Special**  
12/30, 10 pm-midnight

**Lidia Celebrates America: A Heartland Holiday Feast**  
12/22, 2 pm

**Little Women**  
12/30, 2 pm (part 1)

**Living St Louis**  
Most Sundays at 9:30 am,  
Tuesdays at 1:30 pm,  
Thursdays at 10:30 pm,  
Saturdays at 2 am and 3 pm

**Nature**  
Most Sundays and  
Thursdays at 1 am

**Nova**  
Most Sundays at midnight  
and Thursdays at 2 am

**The Philadelphia Story**  
11/11, 10 pm

**A Place in the Heart**  
12/16, 10 pm

**Rick Steves Special**  
European Christmas:  
12/16, 11 am;  
12/25, 10:30 pm

The Story of Fascism  
in Europe:  
11/7, 1:30 pm, 10 pm;  
11/9, 2 am

**Sacred**  
12/17, 1:30 am

**Sinking Cities**  
Thursdays 11/8, 11/15,  
11/22 at 2 am

**tasteMAKERS**  
Most Saturdays at  
2:30 am, 11:30 am,  
3:30 pm, 6:30 pm;  
Sundays at  
10 am, 6:30 pm;  
Thursdays at 10 pm;  
Tuesdays at 2 pm

**Terms of Endearment**  
11/18, 10 pm

**Tesla: American Experience**  
12/20 and 12/29 at 2 am

**Victoria, Season 2**  
Tuesdays at 1 am

**We'll Meet Again**  
Wednesdays at 1:30 pm;  
12/21 and 12/28, at 1 am

## CORPORATE

# underwriters

We gratefully acknowledge the following underwriters and encourage you to support these companies that support public television. For information about underwriting, please call our underwriting office at (314) 512-9165.

Air Comfort  
Service Heating  
& Cooling

Ameren

American Quilters  
Society

Art on the Square

Bayer

Bellefontaine  
Cemetery

Blueprint4  
SummerSTL

Bunge North  
America

Brentwood Travel

Butler's Pantry

Callier's Catering

Carol House  
Furniture

Ces and Judy's  
Catering

Chaumette  
Vineyards

Citi

Clayton Valet

The Curtain  
Exchange

Employees  
Community Fund  
of the Boeing  
Company

The Fabulous  
Fox Theatre

Flotron &  
McIntosh Strategic  
Governmental  
Consultants

The Gatesworth  
Gateway Center

Gateway Region  
YMCA

Grand Center,  
Inc.

Harper School

Iron Workers  
Local No. 396

The Jewish  
Federation of  
St. Louis

Johnnie Brock's  
Dungeon

Katy Land Trust

Kodner Gallery

Mackey Mitchell  
Architects

The Magic House

Michele C. Cater-  
ing and Events

Missouri  
Department of  
Conservation

Missouri  
Department of  
Transportation

Missouri History  
Museum

Missouri Lottery

The MUNY

Mutal of Omaha

Nidec Motor  
Corporation

Opera Theatre  
of Saint Louis

Paducah  
Convention and  
Visitors Bureau

Peabody Opera  
House

PNC Bank

Ranken Jordan  
Pediatric Bridge  
Hospital

Republic  
Services

Saint Louis  
Art Fair

Saint Louis  
Art Museum

The Sheldon  
Concert Hall

Simon's Jewelers

Stages St. Louis

St. Louis  
Cardinals

St. Louis  
Public Library

St. Louis  
Regional Chamber

St. Louis  
Speakers Series

St. Louis  
Symphony

Wells Fargo  
Advisors



# **Are Your Ducks in a Row?**



**A few simple steps today**

**Can give you peace of mind.**

Whatever your stage in life, it is a good idea to think about and plan for how your affairs will be handled. A few simple steps today can give you peace of mind tomorrow by ensuring that you and your loved ones are well protected.

**nineNetwork** 

**Contact us today for a FREE  
Personal Estate Planning Guide**

Visit [nineNet.org/estate-planning](http://nineNet.org/estate-planning) or  
contact Roya Bromell at (314) 512-9129

# *Donate* YOUR CAR to



## And drive away with a *Free* 1-YEAR MEMBERSHIP

Donate your vehicle to the Nine Network and you'll be supporting all of the programs and services you love. Plus, you can receive a tax deduction when you itemize your return. Nine's vehicle donation program also accepts boats, motorcycles and trucks. We'll take care of the paperwork and picking up your vehicle.

Contributions may be tax deductible to the extent permitted by applicable laws.

Call toll-free **1-855-482-5382** or go to **[nineNet.org/vehicle](http://nineNet.org/vehicle)**