

DECEMBER 2019



PBS Reno

PROGRAM GUIDE



It is an **ALL NEW PBS!**

Find out more on **PBSReno.org**

Let **PBS Reno** Entertain Your Curiosity!

pbsreno.org • 775.600.0555

SPIRIT OF THE SEASON

Live at the Pioneer Center for the Performing Arts

A Holiday Tradition with the Reno Phil

NEW! FRIDAY
DECEMBER 6, 2019
7:00 PM

SATURDAY
DECEMBER 7, 2019
2:00 PM & 7:00 PM

SUNDAY
DECEMBER 8, 2019
2:00 PM



Tickets at RenoPhil.com
or call 775.323.6393

BETTER MATTERS



At Dynagraphics, we're committed to offering the highest quality printing in Reno. Choose Dynagraphics. Choose Better.

-Cindy Mason/CEO



DYNAGRAPHICS

775.786.2041 | dynareno.com
2001 Timber Way | Reno, NV 89512

Need A New Doctor?

Our Medical Group is accepting new patients.

770.7664

SaintMarysReno.com



Saint Mary's
Health Network



These are exciting times at your public television station! We have a new name—a new brand! We have a new logo, new phone numbers and email addresses and soon a new YouTube TV channel. As you see on your screens, PBS has updated its brand and encouraged its 340 member stations to do the same. Following several informative local focus groups, our new name is **PBS Reno**. Much easier to remember and find across the many platforms where our content is available. Our new phone numbers and email addresses will make it easier for you to communicate with us. Be sure to let us know what you think about our new name and “look.”

While the logo and brand may be new—the great things are the same. Our ownership is still Channel 5 Public Broadcasting, Inc. as it has been for all 36 years we have served this region. We are still an independent 501c3 not for profit organization headed by a committed board and staff that appreciates your annual financial support. Our incredible, award winning PBS programs like *Antiques Roadshow*, *Masterpiece*, *PBS Newshour*, *This Old House*, *Sesame Street* and all the rest continue to be your favorites. **PBS Reno** continues to produce exceptional documentaries and local series like *Work of Art: Reno Phil*, *artEffects* and *Wild Nevada*...which continue to be seen all over the nation on PBS stations, giving positive visibility to our region. **PBS Reno's** Education department continues to provide its *Ready to Learn* workshops to students in 6 counties during the school year. As the saying goes, the good things stay the same.

For the past 10 years, it has been my honor to lead our passionate team at **PBS Reno**. As I celebrate this important anniversary I am grateful for all of you who partner with us in the important work we do in our area. Fasten your seatbelts because the best is yet to come!

Kurt A Mische, CRMC/CRSM
President & CEO

Meetings of the PBS Reno Board of Trustees, Board Committees and the Community Advisory Board are held at the PBS Reno offices at 1670 N. Virginia Street, Reno, Nevada. Please call 775-600-0555 or visit www.pbs.org for meeting days, times, and agendas.

PBS Reno Program Guide (USPS #170) is published monthly by Channel 5 Broadcasting,
1670 N. Virginia St., Reno, NV 89503-0703
Periodical Postage Rate Paid at Reno NV 89510

The program guide is a service provided to PBS Reno members & friends. PBS Reno Membership of \$45 (\$35 for seniors) or more includes a \$10 subscription to PBS Reno Program Guide.

Channel 5 Broadcasting, is a community-licensed, Public Television Station in Reno, NV

POSTMASTER: Send address changes to: PBS Reno Program Guide. 1670 N. Virginia St., Reno, NV 89503-0703
Volume 35 Number 12 Managing Editor: Barbara Harmon Layout & Design: Julie Melton

STOP!

SCAM ALERT



YOU CAN COUNT ON US.

Is someone threatening to turn off your electricity unless you provide a gift card, MoneyPak® or other prepaid card? This is a common utility imposter scam – do not fall victim! **If you have been threatened, please take the following action immediately.** It is helpful to provide as much information about the scam as possible, including the scammer's phone number.

1. Do not purchase a gift card, and do not make any additional contact with the scammer(s).
2. Call NV Energy at **(702) 402-SCAM** to report the incident and review your account.
3. File a complaint with the Federal Trade Commission at **ftc.gov/complaint** or by calling **(877) FTC-HELP**.

Visit **nvenergy.com/scam** to learn how to protect yourself in the future.

Subscribe today!



Support and
celebrate our
local food
and drink
community



edible RENO-TAHOE®

Visit EdibleRenoTahoe.com

MEMBERCARD BENEFITS

**Bella Voce
Women's Ensemble**

SNOW!

Sunday, December 1 at 3pm
First United Methodist Church,
Carson City

Saturday, December 14 at 7pm
St. John's Presbyterian Church, Reno

Sunday, December 15 at 4pm
Trinity Episcopal Church, Reno

Free Admission

775-359-1533

www.bellavocereno.org

PBS RENO KIDS SCHEDULE

WEEKDAYS

6:00am Ready Jet Go!
 6:30am Arthur
 7:00am Curious George
 7:00am Nature Cat Return of Bad Dog Bart, 12/27
 7:30am Nature Cat
 8:00am Wild Kratts
 8:30am Molly of Denali
 9:30am Let's Go Luna!
 10:00am Daniel Tiger's Neighborhood
 10:30am Clifford The Big Red Dog Special, 12/9
 10:30am Clifford The Big Red Dog, 12/20, 12/27
 11:00am Sesame Street
 11:30am Pinkalicious & Peterrific
 noon Dinosaur Train
 12:30pm Cat in the Hat Knows A Lot About That!

SATURDAYS

6:00am Arthur
 6:30am Dinosaur Train
 7:00am Sesame Street
 7:30am Daniel Tiger's Neighborhood

SUNDAYS

6:00am Daniel Tiger's Neighborhood
 6:30am Mr. Rogers' Neighborhood
 7:00am Peg + Cat, 12/8
 7:00am Clifford The Big Red Dog Special, 12/15
 7:00am Clifford The Big Red Dog, 12/22, 12/29
 7:30am Daniel Tiger's Neighborhood, ex. 12/1, 12/15
 8:00am ODD Squad

**Celebrate
 the Season
 with your
 PBS KIDS
 friends**

**Holiday Specials
 All Month Long
 visit
pbsreno.org**



**PBS Reno
 Kids Club**

**Happy Birthday
 to our December
 Birthday Club Members!**



Ezra.....12/05	Daisy.....12/06	Wyatt.....12/22	Logan.....12/24
Lennox.....12/05	Brooke.....12/16	Josephine...12/23	Blake.....12/29
Quinn.....12/05	Edison.....12/20	Addison.....12/23	

Sign up today! and enjoy FREE admission to
 at least three special events throughout the year!



Call Gigi at 775-600-0546 or visit
pbsreno.org to enroll a child today!



Membership Campaign



Tickets Available
775-784-1900 or pbsreno.org



Holiday
Programming

Please note, program changes are often made after press time.

We regret any inconvenience this may cause.

Visit pbsreno.org for updated programming information.

SUNDAY 1



8:30 LONGEVITY PARADOX WITH STEVEN GUNDRY, MD

Dr. Gundry shares an easy approach to help us all feel better and more youthful.

(Repeats 12/2

at 4:30am,

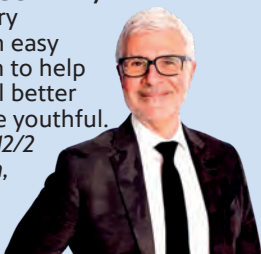
12/3 at

2:30pm,

12/5 at

3am, 12/6 at 4:30am, 12/13 at

3:30am and 12/18 at 1pm)



10:00 AGING BACKWARDS 3 WITH MIRANDA ESMONDE-WHITE

Learn how to keep your mind sharp and your body active as you age using gentle daily movement.

(Repeats 12/2 at 1pm & 11pm, 12/4

at 3pm, 11:30pm & 5am, 12/7 at

11am, 12/10 at 5am, 12/11 at 1pm,

12/12 at 3am and, 12/13 at 5am)

11:00 5 DAY RAPID RESET WITH DR. KELLYANN

Dr. Kellyann presents a plan to losing weight, gaining energy and reclaiming your joie de vivre.

(Repeats at

12:30am, 12/3 at

2am, 12/4 at 1pm,

12/5 at 1am, 12/6

at 2:30pm, 12/7

at 9:30am, 12/8 at

8:30am, 12/11 at

4am and 12/13 at 1:30am)



1:00 THE BRAIN FITNESS PROGRAM

This program is designed to drive beneficial chemical, physical and functional change in the brain.

(Repeats at 2:30am, 12/3 at 1pm & 4am, 12/7 at noon & 4am, 12/12 at 4am and 12/18 at 2:30pm)

3:00 GREAT PERFORMANCES

"An Intimate Evening with David Foster" Enjoy a star-studded concert with 16-time Grammy Award winner David Foster.

5:00 PBS NEWSHOUR WEEKEND

5:30 IL VOLO: TEN YEARS

Il Volo performs "Grande Amore," "Il Mondo" and more hits in the ancient city of Matera, Italy.

(Repeats Tuesday, 12/3 at 11:30pm

and Saturday, 12/7 at 11pm)

7:00 DOWNTON ABBEY RETURNS!

Join Jim Carter for a celebration of the beloved hit series.

9:00 ARETHA FRANKLIN REMEMBERED (MY MUSIC)



Celebrate the legendary Queen of Soul with this song filled tribute of her greatest performances. (Repeats Saturday, 12/7 at 7:30pm)

See Page 5 for Kids Schedule

10:30 MEMORY RESCUE WITH DANIEL AMEN, M.D.

Dr. Daniel Amen demonstrates several ways to supercharge your memory.

(Repeats 12/2 at 2pm & 3am, 12/5 at 4:30am, 12/7 at 2:30am, 12/9 at 4am and 12/12 at 1:30am)

Overnight Programming

- 12:30 5 DAY RAPID RESET WITH DR. KELLYANN (R)
2:30 BRAIN FITNESS PROGRAM (R)
4:30 FOOD: WHAT THE HECK SHOULD I EAT? WITH MARK HYMAN, MD
Dr. Mark Hyman reveals which foods nurture our health and which foods can pose a threat.

MONDAY 2



- 1pm **AGING BACKWARDS 3 WITH MIRANDA ESMONDE-WHITE (R)**
(See Sunday, 12/1 at 10am)
2:00 **MEMORY RESCUE WITH DANIEL AMEN, M.D. (R)**
(See Sunday, 12/1 at 10:30pm)
4:00 **PBS NEWSHOUR**
5:00 **NHK NEWSLINE**
5:30 **DW NEWS**
6:00 **BBC WORLD NEWS AMERICA**
6:30 **PBS NEWSHOUR**
7:30 **NIGHTLY BUSINESS REPORT**
8:00 **ANTIQUES ROADSHOW**
"Harrisburg" Some finds include a Charles "Heinie" Wagner Red Sox archive and a Carl Schweninger oil painting. *(Part 2 of 3)*
(Repeats Monday, 12/9 at 3pm)
9:00 **KEN BURNS: COUNTRY MUSIC**
A compelling history of an American art form, this film explores the evolution of country music and focuses on some of the fascinating trailblazers.
Hosted by Kathy Mattea.
(Repeats at 1am, Wednesday, 12/4 at 3am and Monday, 12/9 at 2am)
11:00 **AGING BACKWARDS 3 WITH MIRANDA ESMONDE-WHITE (R)**
(See Sunday, 12/1 at 10am)



Overnight Programming

- MIDNIGHT AMANPOUR AND COMPANY
1:00 KEN BURNS:
COUNTRY MUSIC (R)
3:00 MEMORY RESCUE WITH
DANIEL AMEN, M.D. (R)
(See Sunday, 12/1 at 10:30pm)
4:30 THE LONGEVITY PARADOX WITH
STEVEN GUNDRY, MD (R)
(See Sunday, 12/1 at 8:30am)

TUESDAY 3



- 1pm **THE BRAIN FITNESS PROGRAM (R)**
(See Sunday, 12/1 at 1pm)
2:30 **THE LONGEVITY PARADOX WITH STEVEN GUNDRY, MD (R)**
(See Sunday, 12/1 at 8:30am)
4:00 **PBS NEWSHOUR**
5:00 **NHK NEWSLINE**
5:30 **DW NEWS**
6:00 **BBC WORLD NEWS AMERICA**
6:30 **PBS NEWSHOUR**
7:30 **NIGHTLY BUSINESS REPORT**
8:00 **THE WORK OF ART: RENO PHIL**  **PBS Reno**
As the Reno Phil performs its 50th season, composer Zhou Tian goes through the process of creating a brand-new piece commemorating the sesquicentennial of the Transcontinental Railroad.
(Repeats 12/4 at 1:30am, 12/6 at 3am, 12/7 at 3:30pm and 12/8 at 10:30am)

9:30 RIVERDANCE LIVE FROM BEIJING



A full house enjoys the sophistication and vibrancy of this great performance filmed in China.
(Repeats 12/6 at 8:30pm, 12/8 at 5:30pm, 12/10 at 3am & 12/11 at 2pm)



CELTIC WOMAN: ANCIENT LAND

Wednesday, 12/4 at 9:30pm

11:30 IL VOLO: TEN YEARS (R)
(See Sunday, 12/1 at 5:30pm)

Overnight Programming

- 1:00 AMANPOUR AND COMPANY
2:00 5 DAY RAPID RESET WITH
DR. KELLYANN (R)
(See Sunday, 12/1 at 11am)
4:00 BRAIN FITNESS PROGRAM (R)
(See Sunday, 12/1 at 1pm)

WEDNESDAY 4



- 1pm 5 DAY RAPID RESET WITH
DR. KELLYANN (R)**
(See Sunday, 12/1 at 11am)
**3:00 AGING BACKWARDS 3 WITH
MIRANDA ESMONDE-WHITE (R)**
(See Sunday, 12/1 at 10am)
4:00 PBS NEWSHOUR
5:00 NHK NEWSLINE
5:30 DW NEWS
6:00 BBC WORLD NEWS AMERICA
6:30 PBS NEWSHOUR
7:30 NIGHTLY BUSINESS REPORT
8:00 NATURE
"The Story
of Cats:
Asia to
Africa"
Discover
how the
first cats
arose in
the forests



of Asia and how they spread
across the continent.

(Repeats Thursday, 12/5 at 2:30pm
and Wednesday, 12/11 at 1am)

9:30



CELTIC WOMAN: ANCIENT LAND

Delight in the shimmering voices
and enchanting music filmed at
the beautiful Johnstown Castle in
Wexford, Ireland.

(Repeats Friday, 12/6 at 10:30pm,
Saturday, 12/7 at 12:30am, Sunday,
12/8 at 7:30pm & 1:30am and Sat-
urday, 12/14 at 4am)

**11:30 AGING BACKWARDS 3 WITH
MIRANDA ESMONDE-WHITE (R)**
(See Sunday, 12/1 at 10am)

Overnight Programming

- 12:30 AMANPOUR AND COMPANY
1:30 THE WORK OF ART:
RENO PHIL (R) **PBS Reno**
(See Tuesday, 12/3 at 8pm)
3:00 KEN BURNS: COUNTRY MUSIC (R)
(See Monday, 12/2 at 9pm)
5:00 AGING BACKWARDS 3 WITH
MIRANDA ESMONDE-WHITE (R)
(See Sunday, 12/1 at 10am)

THURSDAY 5



1pm EARTH'S SACRED WONDERS

Go on an amazing journey to
some of the greatest spiritual
buildings and places of worship

to celebrate the scale, ingenuity and faith embodied by the world's most remarkable religious sites.

2:30 NATURE (R)

(See Wednesday, 12/4 at 8pm)

4:00 PBS NEWSHOUR

5:00 NHK NEWSLINE

5:30 DW NEWS

6:00 BBC WORLD NEWS AMERICA

6:30 PBS NEWSHOUR

7:30 NIGHTLY BUSINESS REPORT

8:00 WILD NEVADA  **PBS Reno**

Visit Washoe Lake State Park, Chickadee Ridge, Ballardini Ranch Trail, Liberty Pass and the Ruby Mountains – all capped off with a refreshing dip in a hot spring.

(Repeats Fri., 12/6 at 1:30am, Sat., 12/7 at 2pm, Mon., 12/9 at 1am and Wed., 12/11 at 2:30am)

9:00 MISS FISHER UNCOVERED

Go behind-the-scenes of the Australian series, "Miss Fisher Murder Mysteries."

10:00 WILD NEVADA SEASON 5

PREVIEW  **PBS Reno**



Enjoy this peek of Wild Nevada Season 5, coming to you in 2020. (Repeats Friday, 12/6 at 2:30am, Saturday, 12/7 at 3pm and Wednesday, 12/11 at 3:30am)

10:30 KEN BURNS:

THE NATIONAL PARKS

Explore the beauty and grandeur of our nation's magnificent parks, from Acadia to Yosemite.

Overnight Programming

MIDNIGHT AMANPOUR AND COMPANY

1:00 5 DAY RAPID RESET WITH

DR. KELLYANN (R)

(See Sunday, 12/1 at 11am)

3:00 THE LONGEVITY PARADOX WITH

STEVEN GUNDRY, MD (R)

(See Sunday, 12/1 at 8:30am)

4:30 MEMORY RESCUE WITH

DANIEL AMEN, M.D. (R)

(See Sunday, 12/1 at 10:30pm)

FRIDAY 6



1pm 3 STEPS TO PAIN-FREE LIVING

Eliminate the root cause of many painful conditions with this easy to follow plan from Lee Albert.

2:30 5 DAY RAPID RESET WITH

DR. KELLYANN (R)

(See Sunday, 12/1 at 11am)

4:00 PBS NEWSHOUR

5:00 NHK NEWSLINE

5:30 DW NEWS

6:00 BBC WORLD NEWS AMERICA

6:30 PBS NEWSHOUR

7:30 NIGHTLY BUSINESS REPORT

8:00 WASHINGTON WEEK

8:30 RIVERDANCE LIVE

FROM BEIJING (R)

(See Tuesday, 12/3 at 9:30pm)

10:30 CELTIC WOMAN:

ANCIENT LAND (R)

(See Wednesday, 12/4 at 9:30pm)


Overnight Programming

12:30 AMANPOUR AND COMPANY

1:30 WILD NEVADA (R)  **PBS Reno**


(See Thursday, 12/5 at 8pm)

2:30 WILD NEVADA SEASON 5

PREVIEW (R)  **PBS Reno**

(See Thursday, 12/5 at 10pm)

3:00 THE WORK OF ART:

RENO PHIL (R)  **PBS Reno**

(See Tuesday, 12/3 at 8pm)

4:30 THE LONGEVITY PARADOX WITH

STEVEN GUNDRY, MD (R)

(See Sunday, 12/1 at 8:30am)

SATURDAY 7

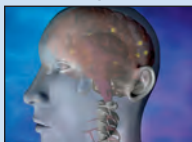


8am SESAME STREET: 50 YEARS & STILL SUNNY!




Enjoy this lively, entertaining, and emotionally engaging new documentary special brimming over with music, laughter, tears and celebrity appearances. (Repeats Sunday, 12/8 at noon)

- 9:30 5 DAY RAPID RESET WITH DR. KELLYANN (R)**
(See Sunday, 12/1 at 11am)
- 11:00 AGING BACKWARDS 3 WITH MIRANDA ESMONDE-WHITE (R)**
(See Sunday, 12/1 at 10am)
- noon THE BRAIN FITNESS PROGRAM (R)**
(See Sunday, 12/1 at 1pm)
- 2:00 WILD NEVADA (R)**  *(See Thursday, 12/5 at 8pm)*
- 3:00 WILD NEVADA SEASON 5 PREVIEW (R)**  *(See Thursday, 12/5 at 10pm)*
- 3:30 THE WORK OF ART: RENO PHIL (R)**  *(See Tuesday, 12/3 at 8pm)*
- 5:00 PBS NEWSHOUR WEEKEND**
- 5:30 A CLASSIC CHRISTMAS (MY MUSIC)**
 Old-fashioned favorites such as "Silent Night," "White Christmas," "Jingle Bells" and many more are featured.
(Repeats Tuesday, 12/10 at 1am)



- 7:30 ARETHA FRANKLIN REMEMBERED (MY MUSIC) (R)**
(See Sunday, 12/1 at 9pm)
- 9:00 RHYTHM, LOVE & SOUL (MY MUSIC)**
Join legends of R&B, Motown and soul, including Aretha Franklin, Gloria Gaynor and The Manhattans.
- 11:00 IL VOLO: TEN YEARS (R)**
(See Sunday, 12/1 at 5:30pm)

Overnight Programming


- 12:30 CELTIC WOMAN: ANCIENT LAND (R)**
 *(See Wednesday, 12/4 at 9:30pm)*
- 2:30 MEMORY RESCUE WITH DANIEL AMEN, M.D. (R)**
(See Sunday, 12/1 at 10:30pm)
- 4:00 BRAIN FITNESS PROGRAM (R)**
(See Sunday, 12/1 at 1pm)

SUNDAY 8




- 8:30 5 DAY RAPID RESET WITH DR. KELLYANN (R)**
(See Sunday, 12/1 at 11am)
- 10:30 THE WORK OF ART: RENO PHIL (R)**  *(See Tuesday, 12/3 at 8pm)*
- noon SESAME STREET: 50 YEARS & STILL SUNNY! (R)**
(See Saturday, 12/7 at 8am)
- 1:30 PETE SEEGER TRIBUTE CONCERT: WOODY'S CHILDREN 50TH ANNIVERSARY**
Join legendary folk musicians in a tribute to Pete Seeger on his 100th birthday.
- 3:00 COUNTRY MUSIC: LIVE AT THE RYMAN**
Acclaimed filmmaker and storyteller Ken Burns invited some of country music's finest artists to gather at Nashville's Ryman Auditorium.
- 5:00 PBS NEWSHOUR WEEKEND**
- 5:30 RIVERDANCE LIVE FROM BEIJING (R)**
 *(See Tuesday, 12/3 at 9:30pm)*
- 7:30 CELTIC WOMAN: ANCIENT LAND (R)**
 *(See Wednesday, 12/4 at 9:30pm)*





DONATE YOUR VEHICLE

The process is easy, the pick-up is free.



PBS Reno

877-800-5672
knpb.careasy.org

GREAT PERFORMANCES

"Jesus Christ Superstar Live in Concert"

Sunday, 12/8 at 9:30pm



9:30 GREAT PERFORMANCES

"Jesus Christ Superstar Live in Concert" Experience Andrew Lloyd Webber's rock opera starring John Legend, Sara Bareilles and Alice Cooper.

(Repeats at 3:30am and Saturday, 12/14 at 1:30am)

Overnight Programming

MIDNIGHT JOHN FOGERTY: MY 50 YEAR TRIP
Take a musical journey through Fogerty's hit parade with Creedence Clearwater Revival.

1:30 CELTIC WOMAN:



ANCIENT LAND (R)

(See Wednesday, 12/4 at 9:30pm)

3:30 GREAT PERFORMANCES (R)

MONDAY 9

1pm AMERICA'S TEST KITCHEN SPECIAL: HOME FOR THE HOLIDAYS



While the cast is home for the holidays, they share great tips for planning a stress-free gathering!

2:00 THE GREAT BRITISH

BAKING SHOW

"Desserts"

3:00 ANTIQUES ROADSHOW (R)

"Harrisburg" (Part 2 of 3)

(See Monday, 12/2 at 8pm)

4:00 PBS NEWSHOUR

5:00 NHK NEWSLINE

5:30 DW NEWS

6:00 BBC WORLD NEWS AMERICA

6:30 PBS NEWSHOUR

7:30 NIGHTLY BUSINESS REPORT

8:00 ANTIQUES ROADSHOW

"New Orleans" Journey to The Big Easy for hidden treasures like a diamond bracelet and a Van Cleef & Arpels ring. (Part 1 of 3)
(Repeats Saturday, 12/14 at 8am & 7pm and Monday, 12/16 at 3pm)

9:00 ANTIQUES ROADSHOW

"New Orleans" Incredible stories and items include a "Blade Runner" set decoration. (Part 2 of 3)

10:00 THE PORTILLO EXPEDITION: MYSTERY AT BOUGAINVILLE ISLAND



American explorers search for the wreckage from a plane carrying a Japanese Admiral.

11:30 THE LAST RING HOME

A Naval Academy ring made its way home 17 years after a soldier was killed during World War II.

Overnight Programming

- MIDNIGHT AMANPOUR AND COMPANY
 1:00 WILD NEVADA (R)  **PBS Reno**
(See Thursday, 12/5 at 8pm)
 2:00 KEN BURNS:
 COUNTRY MUSIC (R)
(See Monday, 12/2 at 9pm)
 4:00 MEMORY RESCUE WITH
 DANIEL AMEN, M.D. (R)
(See Sunday, 12/1 at 10:30pm)

TUESDAY 10

- 1pm **WILD NEVADA**  **PBS Reno**
"Boulder City Adventure" Join Dave and Chris for mountain biking, hiking and sky diving.
 1:30 **FAMILY TRAVEL WITH COLLEEN KELLY**
"Grand Canyon, Arizona - Beauty in the Canyons"
 2:00 **SHERLOCK ON MASTERPIECE**
"The Abominable Bride" Rejoin Benedict Cumberbatch and Martin Freeman as Sherlock Holmes and Dr. Watson in 1890s London.
 3:30 **THE MAGIC OF CHRISTMAS IN ALSACE**
 Enjoy a magical Christmas in the small towns and villages of the Alsace region of France.
(Repeats Sunday, 12/15 at 12:30am and Wednesday, 12/25 at 11:30pm)
 4:00 **PBS NEWSHOUR**
 5:00 **NHK NEWSLINE**
 5:30 **DW NEWS**
 6:00 **BBC WORLD NEWS AMERICA**
 6:30 **PBS NEWSHOUR**
 7:30 **NIGHTLY BUSINESS REPORT**
 8:00 **AGING MATTERS: LONELINESS & ISOLATION**



Characteristics linked to social isolation and health risks associated with loneliness are examined.
(Repeats Friday, 12/13 at 2pm)

- 8:30 **CLOSE TO HOME**
"Depression" This program aims to inspire those whose lives have been touched by depression.
(Repeats Friday, 12/13 at 2:30pm)

9:00 IT'S "JUST" ANXIETY

A dozen people from diverse backgrounds describe their personal struggles with anxiety.
(Repeats Friday, 12/13 at 3pm)

10:00 FRONTLINE

TBA

11:00 UNDERSTANDING THE OPIOID EPIDEMIC



Stories of people impacted by the opioid epidemic and information from experts are featured.

Overnight Programming

- MIDNIGHT AMANPOUR AND COMPANY
 1:00 A CLASSIC CHRISTMAS
 (MY MUSIC) (R)

(See Saturday, 12/7 at 5:30pm)
 3:00 RIVERDANCE LIVE
 FROM BEIJING (R)
(See Tuesday, 12/3 at 9:30pm)
 5:00 AGING BACKWARDS 3 WITH
 MIRANDA ESMONDE-WHITE (R)
(See Sunday, 12/1 at 10am)

WEDNESDAY 11

- 1pm **AGING BACKWARDS 3 WITH MIRANDA ESMONDE-WHITE** (R)

(See Sunday, 12/1 at 10am)
 2:00 **RIVERDANCE LIVE FROM BEIJING** (R)
 
(See Tuesday, 12/3 at 9:30pm)
 4:00 **PBS NEWSHOUR**
 5:00 **NHK NEWSLINE**
 5:30 **DW NEWS**
 6:00 **BBC WORLD NEWS AMERICA**
 6:30 **PBS NEWSHOUR**
 7:30 **NIGHTLY BUSINESS REPORT**
 8:00 **NATURE**

"Raising the Dinosaur Giant" Paleontologists in South America discover the largest dinosaur bone that has ever been unearthed.
(Repeats Thursday, 12/12 at 3pm and Sunday, 12/15 at 9am)

9:00 NOVA

"Bigger Than T. Rex" A team of paleontologists reconstruct the terrifying dinosaur dubbed Spinosaurus, piece by piece.
(Repeats Thurs., 12/12 at 2pm, Sat., 12/14 at 4pm and Sun., 12/15 at 10am)

10:00 SUPERNATURE – WILD FLYERS



"Defying Gravity" Explore the basic principles of flight to see how animals become airborne in the first place. (Part 1 of 3)

11:00 SUPERNATURE – WILD FLYERS

"Masters of the Sky" The extremes of true flight power, acceleration, speed, maneuverability and endurance are explored. (Part 2 of 3)

Overnight Programming

- MIDNIGHT AMANPOUR AND COMPANY
1:00 NATURE (R)
(See Wednesday, 12/4 at 8pm)
2:30 WILD NEVADA (R) **PBS Reno**
(See Thursday, 12/5 at 8pm)
3:30 WILD NEVADA SEASON 5
PREVIEW (R) **PBS Reno**
(See Thursday, 12/5 at 10pm)
4:00 5 DAY RAPID RESET WITH
 DR. KELLYANN (R)
(See Sunday, 12/1 at 11am)

THURSDAY 12

- 1pm JOURNEYS IN JAPAN
1:30 BEST OF THE JOY OF PAINTING
"Mystic Mountains"
2:00 NOVA (R)
"Bigger Than T. Rex"
(See Wednesday, 12/11 at 9pm)
3:00 NATURE (R)
"Raising the Dinosaur Giant"
(See Wednesday, 12/11 at 8pm)
4:00 PBS NEWSHOUR
5:00 NHK NEWSLINE
5:30 DW NEWS
6:00 BBC WORLD NEWS AMERICA
6:30 PBS NEWSHOUR
7:30 NIGHTLY BUSINESS REPORT
8:00 WILD NEVADA **PBS Reno**
"Best of Wild Nevada III" Hosts Chris and Dave revisit their favorite adventures.
(Repeats Sat., 12/14 at 3pm, Sun., 12/15 at 6pm and Tues., 12/17 at 1pm)

8:30 ARTEFFECTS **PBS Reno**



"Ava Ballet" Take a behind-the-scenes look at the production of the charming holiday classic, *The Nutcracker*.

(Repeats Sunday, 12/15 at 6:30pm)

9:00 MISS FISHER'S MURDER MYSTERIES

"Death Defying Acts" When a magic show assistant is beheaded on stage, a secret murder in the past is unraveled. (Part 1 of 8)

10:00 MYSTERY OF AGATHA CHRISTIE WITH DAVID SUCHET

David Suchet embarks on a journey to learn about the author's extraordinary life.



11:00 THE COLLECTION ON MASTERPIECE

In post-war Paris, Paul Sabine uses his troubled brother's brilliant dress designs to achieve fame. (Part 1 of 7)

Funding for
Closed Caption services
on PBS Reno are
provided locally
through a generous
grant from the
William N. Pennington
Foundation.

PBS Reno

Watch on Channel 5.1 • PBSReno.org



ENDEAVOUR SEASON 5 ON MASTERPIECE

"Muse"

Friday, 12/13 at 8:30pm

Overnight Programming

- 12:30 AMANPOUR AND COMPANY
1:30 MEMORY RESCUE WITH DANIEL AMEN, M.D. (R)
(See Sunday, 12/1 at 10:30pm)
3:00 AGING BACKWARDS 3 WITH MIRANDA ESMONDE-WHITE (R)
(See Sunday, 12/1 at 10am)
4:00 BRAIN FITNESS PROGRAM (R)
(See Sunday, 12/1 at 1pm)

FRIDAY 13

- 1pm IT'S SEW EASY
"Embroidery"
1:30 BEST OF SEWING WITH NANCY
"No-Hassle Triangles Quilt Blocks, Part 2"
2:00 AGING MATTERS:
LONELINESS & ISOLATION (R)
(See Tuesday, 12/10 at 8pm)
2:30 CLOSE TO HOME (R)
"Depression"
(See Tuesday, 12/10 at 8:30pm)
3:00 IT'S "JUST" ANXIETY (R)
(See Tuesday, 12/10 at 9pm)
4:00 PBS NEWSHOUR
5:00 NHK NEWSLINE
5:30 DW NEWS
6:00 BBC WORLD NEWS AMERICA
6:30 PBS NEWSHOUR
7:30 NIGHTLY BUSINESS REPORT
8:00 WASHINGTON WEEK

8:30 ENDEAVOUR SEASON 5 ON MASTERPIECE

"Muse" Past and present collide as the auction of a priceless Faberge Egg occurs at Lonsdale College. (Part 1 of 6)

10:00 CHEFS MARCUS AND VIVIAN: A TASTE OF WHAT'S NEXT

Chefs Vivian Howard and Marcus Samuelsson visit Grand Central Market and explore L.A.'s food scene.

10:30 NO PASSPORT REQUIRED



"Seattle" Marcus Samuelsson travels to Seattle to learn about the city's Filipino American community. (Repeats Sunday, 12/15 at 3am)

11:30 A CHEF'S LIFE HOLIDAY SPECIAL



Vivian Howard hosts her own vision of the season's celebrations with peanut brittle and much more. (Repeats Sunday, 12/15 at 4am)

Overnight Programming

- 12:30 AMANPOUR AND COMPANY
1:30 5 DAY RAPID RESET WITH DR. KELLYANN (R)
(See Sunday, 12/1 at 11am)
3:30 LONGEVITY PARADOX WITH STEVEN GUNDRY, MD (R)
(See Sunday, 12/1 at 8:30am)
5:00 AGING BACKWARDS 3 WITH MIRANDA ESMONDE-WHITE (R)
(See Sunday, 12/1 at 10am)

SATURDAY 14

- 8am **ANTIQUES ROADSHOW** (R)
"New Orleans" (Part 1 of 3)
(See Monday, 12/9 at 8pm)
9:00 **THE GREAT BRITISH BAKING SHOW**
"Pastry"
10:00 **MOTORWEEK**
The 2020 Subaru Legacy, Cadillac XT6 and Ducati Diavel 1260S are showcased.
10:30 **THIS OLD HOUSE**
"Westerly / Raise A Second Story"
11:00 **THIS OLD HOUSE**
"Westerly / Decking for Beginners"
11:30 **GEORGE HIRSCH LIFESTYLE**
"An Egg-cellent Selection"
noon **COOK'S COUNTRY**
"BBQ Brisket and Fritters"
12:30 **AMERICA'S TEST KITCHEN FROM COOK'S ILLUSTRATED**
"Spring Dinner for Company"
1:00 **CHRISTOPHER KIMBALL'S MILK STREET TELEVISION**
"Beirut Fast Food"
1:30 **PATI'S MEXICAN TABLE**
"A Local's Tour of Culiacán"
2:00 **MARTHA BAKES**
"Dried Fruit"
2:30 **JOSEPH ROSENDO'S TRAVELSCOPE**



"Cruising Canada: Ottawa and the Rideau Canal"

- 3:00 **WILD NEVADA** (R) **PBS Reno**
"Best of Wild Nevada III"
(See Thursday, 12/12 at 8pm)

- 3:30 **THIS IS UTAH**
"No Biz Like Show Biz"
4:00 **NOVA** (R)
"Bigger Than T. Rex"
(See Wednesday, 12/11 at 9pm)
5:00 **PBS NEWSHOUR WEEKEND**
5:30 **FIRING LINE WITH MARGARET HOOVER**
6:00 **THE LAWRENCE WELK SHOW**
"Pleasant Dreams"
7:00 **ANTIQUES ROADSHOW** (R)



"New Orleans" (Part 1 of 3)
(See Monday, 12/9 at 8pm)

- 8:00 **KEEPING UP APPEARANCES**
(Repeats Friday, 12/20 at 2:30pm)
8:30 **AS TIME GOES BY**
(Repeats Friday, 12/20 at 2pm)
9:00 **MIDSOMER MURDERS**
"The Glitch" (Part 2 of 2)
(Repeats Tuesday, 12/17 at 2pm and Thursday, 12/19 at 10pm)
10:00 **DEATH IN PARADISE**
(Part 2 of 8)
(Repeats Sunday, 12/15 at 7pm and Tuesday, 12/17 at 3pm)
11:00 **AUSTIN CITY LIMITS**
"Dan Auerbach / Shinyribs"

Overnight Programming

- MIDNIGHT **INDEPENDENT LENS**
"The Witness" The brother of Kitty Genovese re-examines his sister's life and brutal death in New York in 1964.
1:30 **GREAT PERFORMANCES** (R)
(See Sunday, 12/8 at 9:30pm)
4:00 **CELTIC WOMAN:**
ANCIENT LAND (R)
(See Wednesday, 12/4 at 9:30pm)

SUNDAY 15

- 8:30 **MAKE48**
Times up. Time to pitch and present the product ideas to the panel of real industry judges.
9:00 **NATURE** (R)
"Raising the Dinosaur Giant"
(See Wednesday, 12/11 at 8pm)

10:00 NOVA (R)
"Bigger Than T. Rex"
(See Wednesday, 12/11 at 9pm)

11:00 SECOND OPINION
"Congenital Heart Disease" Many congenital heart defects are treatable, and people born with them can live full, active lives.

11:30 100 DAYS, DRINKS, DISHES AND DESTINATIONS
"Vienna, Austria" Dramatic architecture, cozy coffee houses, local hangouts and a sunny beach are explored in Vienna.

noon CALIFORNIA'S GOLD
"Dune Buggy" In a Southern California garage in 1963, 37 year old Bruce Meyers was building a car that would that would become an icon.

12:30 DREAM OF ITALY
"Florence" See the restoration of the Duomo from a unique perspective—a crane.

1:00 ANNE OF GREEN GABLES (2016)
Orphaned Anne is placed in the care of uptight Marilla in a new adaptation of the classic novel.

2:30 ANNE OF GREEN GABLES: THE GOOD STARS
Free-spirited Anne Shirley turns 13 and faces complex situations with friends, adults and Gilbert.

4:00 RICK STEVES EUROPEAN CHRISTMAS



Celebrate Christmas in England, France, Norway, Germany, Austria, Switzerland and Italy.
(Repeats Wednesday, 12/25 at 1pm)

5:00 PBS NEWSHOUR WEEKEND

5:30 THE DAVID RUBENSTEIN SHOW: PEER TO PEER CONVERSATIONS
"Marilyn Hewson"

6:00 WILD NEVADA (R) **PBS Reno**
"Best of Wild Nevada III"
(See Thursday, 12/12 at 8pm)

6:30 ARTEFFECTS (R) **PBS Reno**
"Ava Ballet"
(See Thursday, 12/12 at 8:30pm)

7:00 DEATH IN PARADISE (R)
(Part 2 of 8)
(See Saturday, 12/14 at 10pm)

8:00 VICTORIA SEASON 3 ON MASTERPIECE



"Uneasy Lies The Head That Wears The Crown" Revolution sweeps across Europe and pressure builds on Victoria with new arrivals at the Palace. (Part 1 of 8)
(Repeats Monday, 12/16 at 3am)

9:00 VICTORIA SEASON 3 ON MASTERPIECE
"London Bridge Is Falling Down" Victoria must decide whether to fight the Chartists with force or allow them to present a petition. (Part 2 of 8)
(Repeats at 1am and Monday, 12/16 at 4am)

10:00 CALL THE MIDWIFE HOLIDAY SPECIAL 2017
 Valerie helps a young couple with a traumatic birth and Sister Julienne tries to reunite a family.

11:30 ROYAL WIVES AT WAR
Dramatic monologues by the Queen Mother and Wallis Simpson highlight the abdication crisis of 1936.
(Repeats at 2am, Monday, 12/16 at 5am and Friday, 12/20 at 3pm)

Overnight Programming

12:30 THE MAGIC OF CHRISTMAS IN ALSACE (R)
 (See Tuesday, 12/10 at 3:30pm)

1:00 VICTORIA SEASON 3 ON MASTERPIECE (R)

2:00 ROYAL WIVES AT WAR (R)
3:00 NO PASSPORT REQUIRED (R)
(See Friday, 12/13 at 10:30pm)

4:00 A CHEF'S LIFE HOLIDAY SPECIAL (R)
(See Friday, 12/13 at 11:30pm)

5:00 TALES FROM THE ROYAL WARDROBE

CHRISTMAS WITH THE TABERNACLE CHOIR FEATURING KRISTIN CHENOWETH

Monday, 12/16 at 9pm



MONDAY 16

- 1pm THE GREAT BRITISH BAKING SHOW**
"Christmas Masterclass"
- 2:00 THE GREAT BRITISH BAKING SHOW**
"Tudor Week"
- 3:00 ANTIQUES ROADSHOW (R)**
"New Orleans" (Part 1 of 3)
(See Monday, 12/9 at 8pm)
- 4:00 PBS NEWSHOUR**
- 5:00 NHK NEWSLINE**
- 5:30 DW NEWS**
- 6:00 BBC WORLD NEWS AMERICA**
- 6:30 PBS NEWSHOUR**
- 7:30 NIGHTLY BUSINESS REPORT**
- 8:00 ANTIQUES ROADSHOW**
"New Orleans" Fabulous finds include an "Andy Warhol" portrait by Jamie Wyeth and Chinese wine vessel. (Part 3 of 3)
(Repeats Tuesday, 12/17 at 5am, Saturday, 12/21 at 8am & 7pm and Monday, 12/23 at 3pm)
- 9:00 CHRISTMAS WITH THE TABERNACLE CHOIR FEATURING KRISTIN CHENOWETH**
The Tabernacle Choir and Kristin Chenoweth showcase favorite holiday music, dancing and storytelling.
(Repeats at 1am, Tuesday, 12/17 at 3am, Tuesday, 12/24 at 10pm and Wednesday, 12/25 at 4am)



10:00 CLASSIC CHRISTMAS WITH THE BACH FESTIVAL SOCIETY




The Bach Festival Society of Winter Park, Florida performs traditional holiday selections and carols.

11:00 WHEATON COLLEGE CHRISTMAS FESTIVAL: MESSIAH, PRINCE OF PEACE



The Wheaton concert choir and symphony orchestra celebrate the story of the Nativity through song.

Overnight Programming

- MIDNIGHT**
- 1:00**
 AMANPOUR AND COMPANY
CHRISTMAS WITH THE TABERNACLE CHOIR FEATURING KRISTIN CHENOWETH (R)
- 2:00**
INDEPENDENT LENS
"Attla" An Alaska Native dogsled racer became a sports hero, with one good leg and a determined mindset.
(Repeats 12/17 at 4am, 12/18 at 3am and 12/21 at 12am)

- 3:00 VICTORIA SEASON 3
ON MASTERPIECE (R)
(See Sunday, 12/15 at 8pm)
- 4:00 VICTORIA SEASON 3
ON MASTERPIECE (R)
(See Sunday, 12/15 at 9pm)
- 5:00 ROYAL WIVES AT WAR (R)
(See Sunday, 12/15 at 11:30pm)

TUESDAY 17

- 1pm **WILD NEVADA** (R)  **PBS Reno**
"Best of Wild Nevada III"
(See Thursday, 12/12 at 8pm)
- 1:30 **FAMILY TRAVEL WITH COLLEEN KELLY**
"Orange County, California – Buena Park"
- 2:00 **MIDSOMER MURDERS** (R)
"The Glitch" (Part 2 of 2)
- 3:00 **DEATH IN PARADISE** (R)
(Part 2 of 8)
- 4:00 **PBS NEWSHOUR**
- 5:00 **NHK NEWSLINE**
- 5:30 **DW NEWS**
- 6:00 **BBC WORLD NEWS AMERICA**
- 6:30 **PBS NEWSHOUR**
- 7:30 **NIGHTLY BUSINESS REPORT**
- 8:00 **THE ORNAMENT OF THE WORLD**



Muslims, Christians and Jews forged a common cultural identity during a remarkable time in history.

(Repeats at 1am–Joined in Progress, Wed., 12/18 at 4am, Thurs., 12/19 at 1am, Fri., 12/20 at 3am and Sun., 12/22 at 4am)

10:00 **FRONTLINE**


TBA

(Repeats at 2am)

11:00 **10 MODERN MARVELS THAT CHANGED AMERICA**

Take a whirlwind tour of engineering feats that made our civilization possible.

Overnight Programming

- MIDNIGHT AMANPOUR AND COMPANY
- 1:00 ORNAMENT OF THE WORLD (R)
(Joined in Progress)
- 2:00 FRONTLINE (R)
- 3:00 CHRISTMAS WITH THE
 TABERNAACLE CHOIR FEATURING
KRISTIN CHENOWETH (R)
(See Monday, 12/16 at 9pm)
- 4:00 INDEPENDENT LENS (R)
(See Monday, 12/16 at 2am)
- 5:00 ANTIQUES ROADSHOW (R)
(See Monday, 12/16 at 8pm)

WEDNESDAY 18

- 1pm **THE LONGEVITY PARADOX WITH STEVEN GUNDRY, MD** (R)
(See Sunday, 12/1 at 8:30am)
- 2:30  **THE BRAIN FITNESS PROGRAM** (R)
(See Sunday, 12/1 at 1pm)
- 4:00 **PBS NEWSHOUR**
- 5:00 **NHK NEWSLINE**
- 5:30 **DW NEWS**
- 6:00 **BBC WORLD NEWS AMERICA**
- 6:30 **PBS NEWSHOUR**
- 7:30 **NIGHTLY BUSINESS REPORT**
- 8:00 **NATURE**



"Snowbound: Animals of Winter"
Travel across the snow globe to meet penguins, bison and more animal survivors of winter.

(Repeats Thursday, 12/19 at 3pm & 4am, Saturday, 12/21 at 2am and Sunday, 12/22 at 9am)

9:00 **NOVA**

"Inside Animal Minds: Who's The Smartest?" Scientists try to unlock the secrets of animal communication by tracking dolphins in the Caribbean.

(Repeats at 1am, Thurs., 12/19 at 2pm & 5am, Sat., 12/21 at 4pm & 1am and Sun., 12/22 at 10am)

See Page 5 for Kids Schedule

10:00 SUPERNATURE – WILD FLYERS
"Crowded Skies" In order to survive in the crowded sky, mammals, birds and insects must out-fly the competition. (Part 3 of 3) (Repeats at 2am, Thursday, 12/19 at 3am and Saturday, 12/21 at 3am)

11:00 NATURE



"Yosemite" Learn how Global climate changes are affecting one of America's greatest wildernesses in Yosemite Valley.

Overnight Programming

MIDNIGHT AMANPOUR AND COMPANY
 1:00 NOVA (R)
 2:00 SUPERNATURE – WILD FLYERS (R)
 3:00 INDEPENDENT LENS (R)
 (See Monday, 12/16 at 2am)
 4:00 ORNAMENT OF THE WORLD (R)
 (See Tuesday, 12/17 at 8pm)

THURSDAY 19

1pm JOURNEYS IN JAPAN
1:30 BEST OF THE JOY OF PAINTING
"New Day's Dawn"
2:00 NOVA (R)
"Inside Animal Minds: Who's The Smartest?"
 (See Wednesday, 12/18 at 9pm)
3:00 NATURE (R)
"Snowbound: Animals of Winter"
 (See Wednesday, 12/18 at 8pm)
4:00 PBS NEWSHOUR
5:00 NHK NEWSLINE
5:30 DW NEWS
6:00 BBC WORLD NEWS AMERICA
6:30 PBS NEWSHOUR
7:30 NIGHTLY BUSINESS REPORT
8:00 WILD NEVADA **PBS Reno**
"Gold Butte" Explore the rugged Gold Butte region in the Virgin Mountains.
 (Repeats Saturday, 12/21 at 3pm and Sunday, 12/22 at 6pm)

8:30 ARTEFFECTS **PBS Reno**



"Parade of Lights" Head to Hidden Valley in south Reno and see how dozens of neighbors competitively create dazzling displays of holiday cheer.
 (Repeats Sunday, 12/22 at 6:30pm)

9:00 MISS FISHER'S MURDER MYSTERIES

"Murder and the Maiden" An old flame asks Phryne to investigate the disappearance of a high-ranking RAAF officer.
 (Part 2 of 8)

10:00 MIDSOMER MURDERS (R)
"The Glitch" (Part 2 of 2)



Global. Diverse. Sustainable.

Leading the way in renewable energy in Northern Nevada and around the world.

6140 Plumas St. Reno, Nevada
 775-356-9029
 ormat.com

11:00 THE COLLECTION ON MASTERPIECE



Tormented by demons, Claude goes to dry out in the country, where a terrible secret is unearthed. (*Part 2 of 7*)

Overnight Programming

- MIDNIGHT AMANPOUR AND COMPANY
1:00 ORNAMENT OF THE WORLD (R)
(See Tuesday, 12/17 at 8pm)
3:00 SUPERNATURE – WILD FLYERS (R)
(See Wednesday, 12/18 at 10pm)
4:00 NATURE (R)
(See Wednesday, 12/18 at 8pm)
5:00 NOVA (R)
(See Wednesday, 12/18 at 9pm)

FRIDAY 20

- 1pm IT'S SEW EASY**
"Resort Wear"
1:30 BEST OF SEWING WITH NANCY
"Sew Simple with Rectangles & Squares, Part 1"
2:00 AS TIME GOES BY (R)
2:30 KEEPING UP APPEARANCES (R)
3:00 ROYAL WIVES AT WAR (R)
(See Sunday, 12/15 at 11:30pm)
4:00 PBS NEWSHOUR
5:00 NHK NEWSLINE
5:30 DW NEWS
6:00 BBC WORLD NEWS AMERICA
6:30 PBS NEWSHOUR
7:30 NIGHTLY BUSINESS REPORT
8:00 WASHINGTON WEEK
(Repeats Saturday, 12/21 at 5am)
**8:30 ENDEAVOUR SEASON 5
ON MASTERPIECE**
"Cartouche" Morse and Thursday investigate two poisonings, as a horror movie begins filming in Oxford. (*Part 2 of 6*)
10:00 LIDIA CELEBRATES AMERICA
"Return of the Artisans" Experience a variety of ethnic celebrations across America.
(Repeats at 1am and Sunday, 12/22 at 3am)

11:00 AMERICA'S TEST KITCHEN 20TH ANNIVERSARY SPECIAL



Enjoy 20 of the most popular recipes and great moments from the show's two decades on air.

Overnight Programming

- MIDNIGHT AMANPOUR AND COMPANY
1:00 LIDIA CELEBRATES AMERICA (R)
2:00 VOCES ON PBS
"The Pushouts" Former gang member Victor Rios is a professor, author and expert on the school to prison pipeline.
(Repeats Saturday, 12/21 at 4am)
3:00 ORNAMENT OF THE WORLD (R)
(See Tuesday, 12/17 at 8pm)
5:00 THIS OLD HOUSE HOUR

SATURDAY 21

- 8am ANTIQUES ROADSHOW (R)**
"New Orleans" (*Part 3 of 3*)
(See Monday, 12/16 at 8pm)
**9:00 THE GREAT BRITISH
BAKING SHOW**
"Victorian"
10:00 MOTORWEEK
The 2019 Volvo V60, the 2020 Mazda 3 and the LA Auto Show are featured.
10:30 THIS OLD HOUSE
"Westerly / Return to Paradise"
11:00 THIS OLD HOUSE
"Westerly / The Doors"
11:30 GEORGE HIRSCH LIFESTYLE
"Aww Shucks"
noon COOK'S COUNTRY
"Italian Comfort Food Classics"
**12:30 AMERICA'S TEST KITCHEN
FROM COOK'S ILLUSTRATED**
"How to Braise Everything"
**1:00 CHRISTOPHER KIMBALL'S MILK
STREET TELEVISION**
"Tuesday Night Italian"
1:30 PATI'S MEXICAN TABLE
"Altata, Hidden Gem by the Sea of Cortez"

- 2:00 MARTHA BAKES**
"Apples"
- 2:30 JOSEPH ROSENDO'S TRAVELSCOPE**
"Zambia - Bush & River Safari"
- 3:00 WILD NEVADA (R)**  **PBS Reno**
"Gold Butte"
(See Thursday, 12/19 at 8pm)
- 3:30 THIS IS UTAH**
"Celebrating Our Heritage"
- 4:00 NOVA (R)**
"Inside Animal Minds: Who's The Smartest?"
(See Wednesday, 12/18 at 9pm)
- 5:00 PBS NEWSHOUR WEEKEND**
- 5:30 FIRING LINE WITH MARGARET HOOVER**
(Repeats at 5:30am)
- 6:00 THE LAWRENCE WELK SHOW**
"Christmas"
- 7:00 ANTIQUES ROADSHOW (R)**
"New Orleans" (Part 3 of 3)
(See Monday, 12/16 at 8pm)
- 8:00 KEEPING UP APPEARANCES**
(Repeats Friday, 12/27 at 2:30pm)
- 8:30 AS TIME GOES BY**
(Repeats Friday, 12/27 at 2pm)
- 9:00 MIDSOMER MURDERS**
"Small Mercies" (Part 1 of 2)
(Repeats Thursday, 12/26 at 10pm)
- 10:00 DEATH IN PARADISE**
(Part 3 of 8)
(Repeats Sunday, 12/22 at 7pm)
- 11:00 AUSTIN CITY LIMITS**
"Tom Waits"

Overnight Programming

- MIDNIGHT INDEPENDENT LENS (R)**
(See Monday, 12/16 at 2am)
- 1:00 NOVA (R)**
(See Wednesday, 12/18 at 9pm)
- 2:00 NATURE (R)**
(See Wednesday, 12/18 at 8pm)
- 3:00 SUPERNATURE - WILD FLYERS (R)**
(See Wednesday, 12/18 at 10pm)
- 4:00 VOCES ON PBS (R)**
(See Friday, 12/20 at 2am)
- 5:00 WASHINGTON WEEK (R)**
- 5:30 FIRING LINE WITH MARGARET HOOVER (R)**

SUNDAY 22

- 8:30 MAKE48**
The three winning products begin their journey to the marketplace. First stop re-design.

- 9:00 NATURE (R)**
"Snowbound: Animals of Winter"
(See Wednesday, 12/18 at 8pm)
- 10:00 NOVA (R)**
"Inside Animal Minds: Who's The Smartest?"
(See Wednesday, 12/18 at 9pm)
- 11:00 SECOND OPINION**
"Hypothyroidism" Thyroid disease can be life altering and debilitating, especially when left untreated.
- 11:30 100 DAYS, DRINKS, DISHES AND DESTINATIONS**
"Calistoga, California" Ancient hot springs and volcanic rock define modern vineyards and a new way to dine in Calistoga.
- noon CALIFORNIA'S GOLD**
"Little Hollywood Cars" In 1930, the American Austin car company premiered a miniature car. Huell visits with a man who has the largest collection.
- 12:30 DREAM OF ITALY**
"Abruzzo" Tour coast to countryside in the region of Abruzzo.
- 1:00 ANNE OF GREEN GABLES: FIRE & DEW**
Anne Shirley journeys to Queen's College in Charlottetown and feels overwhelmed by city life.
- 2:30 HANDEL'S MESSIAH**



Jane Seymour narrates the story of celebrated composer and musical genius George Frideric Handel.

4:00 THE PEANUT CRACKER



 **PBS Reno**

Recorded before a live audience at the Pioneer Center in downtown Reno, the Peanut Cracker is ideal for children ages kindergarten-4th grade.

(Repeats Tuesday, 12/24 at 1pm)

- 5:00 PBS NEWSHOUR WEEKEND**
- 5:30 THE DAVID RUBENSTEIN SHOW: PEER TO PEER CONVERSATIONS**
"Condoleezza Rice"

6:00 WILD NEVADA (R)  **PBS Reno**

"Gold Butte"

(See Thursday, 12/19 at 8pm)

6:30 ARTEFFECTS (R)  **PBS Reno**

"Parade of Lights"

(See Thursday, 12/19 at 8:30pm)

7:00 DEATH IN PARADISE (R)

(Part 3 of 8)

**8:00 VICTORIA SEASON 3
ON MASTERPIECE**

"Et In Arcadia" At Osborne House, Victoria is desperate to get back to the Palace. *(Part 3 of 8)*

(Repeats Monday, 12/23 at 3am)

**9:00 VICTORIA SEASON 3
ON MASTERPIECE**

"Foreign Bodies" Albert leaves the Palace for Cambridge and Victoria faces the traumatic impact of a cholera epidemic. *(Part 4 of 8)*
(Repeats at 1am and Monday, 12/23 at 4am)

**10:00 CALL THE MIDWIFE HOLIDAY
SPECIAL 2018**



A new nun and four Chinese orphans arrive unexpectedly at Nonnatus House, causing both joy and chaos for the midwives.


11:30 SECRETS OF HIGHCLERE CASTLE

Learn behind the scenes stories of one of England's most spectacular country houses.

(Repeats Monday, 12/30 at 1pm)

Overnight Programming

12:30

 **EUROPEAN CHRISTMAS MARKETS**
Visit charming markets in festively decorated cities and towns in Germany, France and Switzerland.

1:00 **VICTORIA SEASON 3
ON MASTERPIECE (R)**

2:00 **VICTORIA & ALBERT:
THE WEDDING**
(Part 1 of 2)
(Repeats Monday, 12/23 at 5am and Sunday, 12/29 at 10pm)

3:00 **LIDIA CELEBRATES AMERICA (R)**
(See Friday, 12/20 at 10pm)

4:00 **ORNAMENT OF THE WORLD (R)**
(See Tuesday, 12/17 at 8pm)

MONDAY 23

**1pm THE GREAT BRITISH
BAKING SHOW**
"Christmas Masterclass"

**2:00 THE GREAT BRITISH
BAKING SHOW**
"Patisserie"

3:00 ANTIQUES ROADSHOW (R)
"New Orleans" (Part 3 of 3)
(See Monday, 12/16 at 8pm)

4:00 PBS NEWSHOUR

5:00 NHK NEWSLINE

5:30 DW NEWS

6:00 BBC WORLD NEWS AMERICA

6:30 PBS NEWSHOUR

7:30 NIGHTLY BUSINESS REPORT

8:00 ANTIQUES ROADSHOW





"Mansion Masterpieces" A 1907 Robert Henri oil painting, an English giltwood cabinet-on-stand and more are appraised.
(Repeats at 1am-Joined in Progress, Saturday, 12/28 at 8am & 7pm and Monday, 12/30 at 3pm)


**DIRECT MAIL
EMAIL SERVICES
DIGITAL PRINTING
TRIGGERED AUTOMATION
ADVANCED DATA SERVICES**



**YOUR ALL-IN-ONE DIRECT
MARKETING PARTNER**
775.852.9777 • CSGDIRECT.COM

9:00 CHRISTMAS AT BELMONT 2019
 Traditional carols, classical masterworks, world music and great seasonal favorites are performed.
(Repeats 12/24 at 4am, 12/25 at 2pm & 5am and 12/28 at 2:30am)

10:00 A ST. THOMAS CHRISTMAS: COMFORT & JOY
 This festive performance showcases the university's world-class vocal and instrumental ensembles.
(Repeats Tuesday, 12/24 at 5am and Wednesday, 12/25 at 3pm)

11:00 CHRISTMAS AT ST. OLAF: RIS'N WITH HEALING IN HIS WINGS





Lively and festive music, familiar Christmas carols and beautiful choral anthems are showcased.

Overnight Programming

MIDNIGHT AMANPOUR AND COMPANY ANTIQUES ROADSHOW (R)
(Joined in Progress)
1:30 INDEPENDENT LENS
"Supergirl" A young girl navigates the perils of adolescence while attempting to succeed at powerlifting.
(Repeats 12/26 at 2am, 12/27 at 3am, 12/28 at 12am and 12/29 at 4:30am)
3:00 VICTORIA SEASON 3 ON MASTERPIECE (R)
(See Sunday, 12/22 at 8pm)
4:00 VICTORIA SEASON 3 ON MASTERPIECE (R)
(See Sunday, 12/22 at 9pm)
5:00 VICTORIA & ALBERT: THE WEDDING (R)
(Part 1 of 2)
(Repeats Sunday, 12/29 at 10pm)

TUESDAY 24

1pm THE PEANUT CRACKER (R)

(See Sunday, 12/22 at 4pm)

2:00 MAKING A NEW AMERICAN NUTCRACKER
 Neve Campbell interviews the creative team behind the reimagining of the holiday tale.

3:00 TRANS-SIBERIAN ORCHESTRA: GHOSTS OF CHRISTMAS EVE
 A runaway hides in an abandoned theater that comes to life with music. Jewel and Ossie Davis star.

4:00 PBS NEWSHOUR

5:00 NHK NEWSLINE

5:30 DW NEWS

6:00 BBC WORLD NEWS AMERICA

6:30 PBS NEWSHOUR

7:30 NIGHTLY BUSINESS REPORT

8:00 JORDAN SMITH 'TIS THE

SEASON

Jordan Smith, season nine winner of NBC's *The Voice*, highlights his Christmas album in concert.

(Repeats at 2am)

9:00 FESTIVAL OF CAROLS WITH SYLVIA MCNAIR

Grammy-winning soprano Sylvia McNair and the Indianapolis Symphonic Choir perform holiday classics.

(Repeats at 3am)

10:00 CHRISTMAS WITH THE TABERNACLE CHOIR FEATURING KRISTIN CHENOWETH (R)
(See Monday, 12/16 at 9pm)

11:00 CHRISTMAS AT SUSQUEHANNA: THE 50TH ANNIVERSARY CANDELIGHT SERVICE

This wondrous spectacle features candle lighting and carols.

Overnight Programming

MIDNIGHT BUCKNELL CANDELIGHT CHRISTMAS
 The Rooke Chapel Choir and Ringers perform.
1:00 CRANE CANDELIGHT CONCERT
"Go Tell It on the Mountain"
2:00 JORDAN SMITH 'TIS THE SEASON (R)



CALL THE MIDWIFE HOLIDAY SPECIAL 2019

Wednesday, 12/25 at 9pm



- 3:00 FESTIVAL OF CAROLS WITH SYLVIA MCNAIR (R)
 4:00 CHRISTMAS AT BELMONT 2019 (R)
 (See Monday, 12/23 at 9pm)
 5:00 ST. THOMAS CHRISTMAS: COMFORT & JOY (R)
 (See Monday, 12/23 at 10pm)

WEDNESDAY 25



- 1pm RICK STEVES EUROPEAN CHRISTMAS (R)
 (See Sunday, 12/15 at 4pm)
 2:00 CHRISTMAS AT BELMONT 2019 (R)
 (See Monday, 12/23 at 9pm)
 3:00 A ST. THOMAS CHRISTMAS: COMFORT & JOY (R)



(See Monday, 12/23 at 10pm)

- 4:00 PBS NEWSHOUR
 5:00 NHK NEWSLINE
 5:30 DW NEWS
 6:00 BBC WORLD NEWS AMERICA
 6:30 PBS NEWSHOUR
 7:30 NIGHTLY BUSINESS REPORT

8:00 LUCY WORSLEY'S 12 DAYS OF TUDOR CHRISTMAS



Join Lucy Worsley as she discovers that much of what we enjoy in contemporary Christmas has surprising Tudor origins, rooted in devotion and charity.

(Repeats at 10:30pm, 1am—Joined in Progress, Thursday, 12/26 at 1am & 5am and Friday, 12/27 at 3pm)

9:00 CALL THE MIDWIFE HOLIDAY SPECIAL 2019

Mother Mildred and the Nonnatus House team go to the Outer Hebrides in response to a nursing shortage. Navigating the terrain, they strive to keep up with the needs of the locals.

(Repeats at 1:30am, 12/26 at 3:30am, 12/28 at 1:30am—Joined in Progress and 12/29 at 3am)

- 10:30 LUCY WORSLEY'S 12 DAYS OF TUDOR CHRISTMAS (R)
 11:30 THE MAGIC OF CHRISTMAS IN ALSACE (R)

(See Tuesday, 12/10 at 3:30pm)

Overnight Programming

- MIDNIGHT AMANPOUR AND COMPANY
 1:00 LUCY WORSLEY'S 12 DAYS OF TUDOR CHRISTMAS (R)
(Joined in Progress)
 1:30 CALL THE MIDWIFE HOLIDAY SPECIAL 2019 (R)
 3:00 VICIOUS SPECIAL
 Chart a year in the life of Freddie and Stuart as they enjoy their inheritance and a birthday.
(Repeats Saturday, 12/28 at 4am)
 4:00 CHRISTMAS WITH THE TABERNACLE CHOIR FEATURING KRISTIN CHENOWETH (R)
(See Monday, 12/16 at 9pm)
 5:00 CHRISTMAS AT BELMONT 2019 (R)
(See Monday, 12/23 at 9pm)

THURSDAY 26

- 1pm JOURNEYS IN JAPAN
 1:30 BEST OF THE JOY OF PAINTING
"Pastel Winter"
 2:00 NOVA



"Inside Animal Minds: Bird Genius"
 Researchers use the science of animal cognition to learn how birds understand the world around them.

(Repeats Saturday, 12/28 at 4pm and Sunday, 12/29 at 10am)

- 3:00 NATURE
"Snow Chick" The incredible journey of one vulnerable and charismatic Emperor penguin chick is showcased.


(Repeats Sunday, 12/29 at 9am)

- 4:00 PBS NEWSHOUR
 5:00 NHK NEWSLINE
 5:30 DW NEWS
 6:00 BBC WORLD NEWS AMERICA
 6:30 PBS NEWSHOUR
 7:30 NIGHTLY BUSINESS REPORT
 8:00 WILD NEVADA 

"Great Basin National Park" The park encompasses the Lehman caves, trails, 13 peaks above

11,000 feet and Nevada's only glacier.

(Repeats Saturday, 12/28 at 3pm, Sunday, 12/29 at 6pm and Tuesday, 12/31 at 1pm)




- 8:30 ARTEFFECTS  **PBS Reno**
"Exquisite Gift Wrapping" This former Hollywood photographer and set decorator now spends his time wrapping gifts. Each creation is different than the last.
(Repeats Sunday, 12/29 at 6:30pm)

- 9:00 MISS FISHER'S MURDER MYSTERIES
"Murder and Mozzarella" An Italian woman dies and the ownership of a secret book of recipes becomes the suspected motive.
(Part 3 of 8)

- 10:00 MIDSOMER MURDERS (R)
"Small Mercies" *(Part 1 of 2)*

- 11:00 THE COLLECTION ON MASTERPIECE
 Paul presents his make-or-break collection of gowns. A rival tries to sabotage Nina's big moment.
(Part 3 of 7)

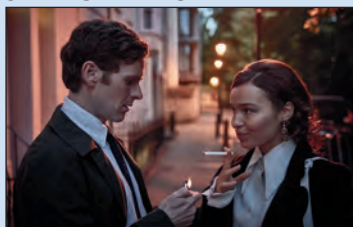
Overnight Programming

- MIDNIGHT AMANPOUR AND COMPANY
 1:00 LUCY WORSLEY'S 12 DAYS OF TUDOR CHRISTMAS (R)
 *(See Wednesday, 12/25 at 8pm)*
 2:00 INDEPENDENT LENS (R)
(See Monday, 12/23 at 1:30am)
 3:30 CALL THE MIDWIFE HOLIDAY SPECIAL 2019 (R)
 *(See Wednesday, 12/25 at 9pm)*
 5:00 LUCY WORSLEY'S 12 DAYS OF TUDOR CHRISTMAS (R)
 *(See Wednesday, 12/25 at 8pm)*

FRIDAY 27

- 1pm IT'S SEW EASY
"Here Comes the Sun"
 1:30 BEST OF SEWING WITH NANCY
"Sew Simple with Rectangles & Squares, Part 2"
 2:00 AS TIME GOES BY (R)
 2:30 KEEPING UP APPEARANCES (R)
 3:00 LUCY WORSLEY'S 12 DAYS OF TUDOR CHRISTMAS (R)
 *(See Wednesday, 12/25 at 8pm)*
 4:00 PBS NEWSHOUR
 5:00 NHK NEWSLINE
 5:30 DW NEWS
 6:00 BBC WORLD NEWS AMERICA

6:30 PBS NEWSHOUR
7:30 NIGHTLY BUSINESS REPORT
8:00 WASHINGTON WEEK
(Repeats Saturday, 12/28 at 5am)
8:30 ENDEAVOUR SEASON 5
ON MASTERPIECE



"Passenger" Investigating a disappearance, Endeavour fears it's linked to the unsolved murder of a teenager. *(Part 3 of 6)*

10:00 CRAFT IN AMERICA
"Quilts" Learn about contemporary quilters as we celebrate the role quilts have played in our country's story.
(Repeats at 1am)
11:00 CRAFT IN AMERICA
"Identity" Artists explore issues of gender, race, culture and place, offering true expressions of their experiences in this world.
(Repeats at 2am)

Overnight Programming

MIDNIGHT AMANPOUR AND COMPANY
1:00 CRAFT IN AMERICA (R)
2:00 CRAFT IN AMERICA (R)
3:00 INDEPENDENT LENS (R)
(See Monday, 12/23 at 1:30am)
4:30 FIRING LINE WITH MARGARET HOOVER
(Repeats Saturday, 12/28 at 5:30pm & 5:30am)
5:00 THIS OLD HOUSE HOUR

SATURDAY 28

8am ANTIQUES ROADSHOW (R)
"Mansion Masterpieces"
(See Monday, 12/23 at 8pm)
9:00 THE GREAT BRITISH BAKING SHOW
"Patisserie"
10:00 MOTORWEEK
 The 2019 BMW Z4 is driven and a Cars.com Challenge featuring Midsize Trucks is showcased.
10:30 THIS OLD HOUSE
"Westerly / Tanks for the Propane"

11:00 ASK THIS OLD HOUSE
"Cable Railing, Painting Shutters"
11:30 GEORGE HIRSCH LIFESTYLE
"Seafood Success!"
noon COOK'S COUNTRY
"Tacos Two Ways"
12:30 AMERICA'S TEST KITCHEN FROM COOK'S ILLUSTRATED
"A Taste of Brazil"
1:00 CHRISTOPHER KIMBALL'S MILK STREET TELEVISION
"Holiday Entertaining"
1:30 PATI'S MEXICAN TABLE
"South by South of the Border with Vivian Howard"
2:00 MARTHA BAKES
"Cultured Dairy"
2:30 RICK STEVES' EUROPE
"The Heart of England"
3:00 WILD NEVADA (R) **PBS Reno**
"Great Basin National Park"
(See Thursday, 12/26 at 8pm)
3:30 THIS IS UTAH
"It Takes A Village"
4:00 NOVA (R)
"Inside Animal Minds: Bird Genius"
(See Thursday, 12/26 at 2pm)
5:00 PBS NEWSHOUR WEEKEND
5:30 FIRING LINE WITH MARGARET HOOVER (R)
(Repeats at 5:30am)
6:00 THE LAWRENCE WELK SHOW
"New Years"
7:00 ANTIQUES ROADSHOW (R)
"Mansion Masterpieces"
(See Monday, 12/23 at 8pm)
8:00 KEEPING UP APPEARANCES
8:30 AS TIME GOES BY
9:00 MIDSOMER MURDERS
"Small Mercies" (Part 2 of 2)
(Repeats Tuesday, 12/31 at 2pm)
10:00 DEATH IN PARADISE
(Part 4 of 8)
(Repeats Sunday, 12/29 at 7pm and Tuesday, 12/31 at 3pm)
11:00 AUSTIN CITY LIMITS 6TH ANNUAL HALL OF FAME HONORS



Celebrate the 2019 Hall of Fame as Shawn Colvin, Buddy Guy and Lyle Lovett are honored.

Overnight Programming

- MIDNIGHT INDEPENDENT LENS (R)
(See Monday, 12/23 at 1:30am)
- 1:30 CALL THE MIDWIFE HOLIDAY
SPECIAL 2019 (R)
 (Joined in Progress)
(See Wednesday, 12/25 at 9pm)
- 2:30 CHRISTMAS AT BELMONT 2019 (R)
(See Monday, 12/23 at 9pm) 
- 3:30 RIBBON OF SAND
The unique ecosystem of the Cape Lookout National Seashore.
(Repeats Tuesday, 12/31 at 1:30am)
- 4:00 VICIOUS SPECIAL (R)
(See Wednesday, 12/25 at 3am)
- 5:00 WASHINGTON WEEK (R)
- 5:30 FIRING LINE WITH
MARGARET HOOVER (R)

SUNDAY 29

- 8:30 **MAKE48**
The three winning teams continue to refine their designs and create new prototypes.
- 9:00 **NATURE** (R)

(See Thursday, 12/26 at 3pm)
- 10:00 **NOVA** (R)
"Inside Animal Minds: Bird Genius"
(See Thursday, 12/26 at 2pm)
- 11:00 **SECOND OPINION**
"Insomnia" The most commonly reported sleep disorder, can cause disruption in a person's well-being.
- 11:30 **100 DAYS, DRINKS, DISHES AND DESTINATIONS**
"Undiscovered Danube, Europe"
Small towns hug the Danube on its journey through Austria, Germany and Slovakia.
- noon **CALIFORNIA'S GOLD**
"Zamboni" Huell learns about the machines that clean the ice at ice rinks and professional hockey events around the world.
- 12:30 **DREAM OF ITALY**
"Basilicata with Francis Ford Coppola" A visit to his ancestral hometown of Bernalda.

1:00 LITTLE WOMEN ON MASTERPIECE



With their father away at war sisters Meg, Jo, Beth and Amy March come to terms with their new life. (Part 1 of 3)

2:00 LITTLE WOMEN ON MASTERPIECE

Circumstances change for Meg, Jo, Beth and Amy as the family faces their most difficult challenge. (Part 2 of 3)

3:00 LITTLE WOMEN ON MASTERPIECE

As circumstances change for Meg, Jo, Beth and Amy, the family must come together to face a challenge. (Part 3 of 3)

4:00 QUEEN'S GARDEN

The "royal wildlife" and remarkable plants are explored in The Queen's Garden in central London.

5:00 PBS NEWSHOUR WEEKEND

5:30 THE DAVID RUBENSTEIN SHOW: PEER TO PEER CONVERSATIONS

"James A. Baker III"

6:00 WILD NEVADA (R) PBS Reno

"Great Basin National Park"

(See Thursday, 12/26 at 8pm)

6:30 ARTEFFECTS (R) PBS Reno

"Exquisite Gift Wrapping"

(See Thursday, 12/26 at 8:30pm)

7:00 DEATH IN PARADISE (R)

(Part 4 of 8)

8:00 VICTORIA SEASON 3 ON MASTERPIECE

"A Show of Unity" After an assassination attempt the Royal household visits Ireland. (Part 5 of 8)
(Repeats Monday, 12/30 at 3am)

9:00 VICTORIA SEASON 3 ON MASTERPIECE

"A Coburg Quartet" Private pictures of the Royal family are made public as the Royals host a Georgian ball. (Part 6 of 8)
(Repeats at 1am and Monday, 12/30 at 4am)

**10:00 VICTORIA & ALBERT:
THE WEDDING**



Experts prepare to reconstruct the wedding that changed history and uncover astonishing details. *(Part 1 of 2)*

**11:00 VICTORIA & ALBERT:
THE WEDDING**

Witness the most accurate reconstruction of Victoria and Albert's wedding ever staged. *(Part 2 of 2)*

(Repeats at 2am and Monday, 12/30 at 5am)

Overnight Programming

MIDNIGHT THOU SHALT NOT KILL

NEW SERIES!

The body of a teen girl is found in a flooded basement. Chief Inspector Valeria Ferro investigates. *(Part 1 of 12)*

1:00 VICTORIA SEASON 3


ON MASTERPIECE (R)

2:00 VICTORIA & ALBERT:

THE WEDDING (R)

3:00 CALL THE MIDWIFE HOLIDAY

SPECIAL 2019 (R)

 *(See Wednesday, 12/25 at 9pm)*

4:30 INDEPENDENT LENS (R)

(See Monday, 12/23 at 1:30am)

MONDAY 30

**1pm SECRETS OF HIGHCLERE
CASTLE (R)**

(See Sunday, 12/22 at 11:30pm)

**2:00 THE GREAT BRITISH
BAKING SHOW**

"The Final"

3:00 ANTIQUES ROADSHOW (R)

"Mansion Masterpieces"

(See Monday, 12/23 at 8pm)

4:00 PBS NEWSHOUR

5:00 NHK NEWSLINE

5:30 DW NEWS

6:00 BBC WORLD NEWS AMERICA

6:30 PBS NEWSHOUR

7:30 NIGHTLY BUSINESS REPORT

8:00 ANTIQUES ROADSHOW

"St. Louis" A 1602 Adam Islip-published book of Chaucer's complete works and more great finds are showcased. *(Part 1 of 3)*

9:00 ANTIQUES ROADSHOW

"St. Louis" Discover spectacular St. Louis treasures, including a 1927 Rookwood Shirayamadani black opal vase. *(Part 2 of 3)*

(Repeats at 1am-Joined in Progress and Monday, 12/31 at 1am-Joined in Progress & 3:30am)

**10:00 REAL RAIL ADVENTURES:
SWISS GRAND TOUR**



Jeff Wilson takes in the sights and sounds of Zurich, St. Gallen, Gstaad and Montreux by train.

**11:00 REAL RAIL ADVENTURES:
SWISS WINTER MAGIC**

The construction marvels and visual splendors of the Swiss rail system are showcased.

Overnight Programming

MIDNIGHT AMANPOUR AND COMPANY

1:00 ANTIQUES ROADSHOW (R)

(Joined in Progress)

1:30 POV

"Midnight Traveler" Hassan Fazili is forced to flee Afghanistan and seek asylum with his wife and two young daughters.

(Repeats Tuesday, 12/31 at 2am)

3:00 VICTORIA SEASON 3

ON MASTERPIECE (R)

(See Sunday, 12/29 at 8pm)

4:00 VICTORIA SEASON 3

ON MASTERPIECE (R)

(See Sunday, 12/29 at 9pm)

5:00 VICTORIA & ALBERT:

THE WEDDING (R)

(See Sunday, 12/29 at 11pm)

TUESDAY 31

1pm WILD NEVADA (R)  **PBS Reno**

"Great Basin National Park"

(See Thursday, 12/26 at 8pm)

LIVE FROM LINCOLN CENTER
"New York Philharmonic Celebrating Sondheim"
Tuesday, 12/31 at 8pm



1:30 FAMILY TRAVEL WITH COLLEEN KELLY
"Orange County, California - Irvine & Dana Point"

2:00 MIDSOMER MURDERS (R)
"Small Mercies" (Part 2 of 2)

3:00 DEATH IN PARADISE (R)
(Part 4 of 8)

4:00 PBS NEWSHOUR

5:00 NHK NEWSLINE

5:30 DW NEWS

6:00 BBC WORLD NEWS AMERICA

6:30 PBS NEWSHOUR

7:30 NIGHTLY BUSINESS REPORT

8:00 LIVE FROM LINCOLN CENTER
"New York Philharmonic Celebrating Sondheim" Celebrate the orchestral music of Stephen Sondheim, performing suites from *"Sunday in the Park," "Into the Woods," "Sweeney Todd"* and more.
(Repeats at 4:30am)

9:30 TONY BENNETT: THE LIBRARY OF CONGRESS GERSHWIN PRIZE FOR POPULAR SONG



Enjoy an all-star tribute to singer Tony Bennett from DAR Constitution Hall in Washington, DC.

11:00 THE BEST OF THE BOSTON POPS



Many of the greatest moments from orchestra's 129-year history are showcased.

Overnight Programming

- MIDNIGHT
- 1:00 ANTIQUES ROADSHOW (R)
(See Monday, 12/30 at 9pm)
(Joined in Progress)
 - 1:30 RIBBON OF SAND (R)
(See Saturday, 12/28 at 3:30am)
 - 2:00 POV (R)
(See Monday, 12/30 at 1:30am)
 - 3:30 ANTIQUES ROADSHOW (R)
(See Monday, 12/30 at 9pm)
 - 4:30 LIVE FROM LINCOLN CENTER (R)





Reno-Tahoe
International
Airport



Your Gateway to Where You Want to Go

Easy. Friendly. Convenient. That's the travel experience you'll find at Reno-Tahoe International Airport. When you book the following non-stop destinations, you're one stop away from virtually anywhere.

Alaska
AIRLINES

allegiant

American Airlines

DELTA

FRONTIER

jetBlue

Southwest

UNITED

volaris

Atlanta Boise Chicago/Midway Chicago/O'Hare Dallas/Ft. Worth Dallas Love Field Denver
Guadalajara, Mexico Houston/Intercontinental Las Vegas Long Beach Los Angeles Minneapolis/St. Paul
New York (JFK) Oakland Phoenix Portland Salt Lake City San Diego San Francisco San Jose Seattle

www.RenoAirport.com



ESTELLE J. KELSEY FOUNDATION

Hands ON!

2nd Saturdays



Bring the family and take part in FREE admission, activities, storytelling, live performances, and hands-on art projects on the Second Saturday of each month from 10 am – 4 pm.

Title sponsorship for Hands ON! Second Saturdays is provided by the Estelle J. Kelsey Foundation.

NEVADA **M**MUSEUM **O**OF **A**RT

Donald W. Reynolds Center for the Visual Arts
E. L. Wiegand Gallery
160 West Liberty Street in downtown Reno

FIGHT THE GOOD FIGHT.

renown.org

Renown[®]
HEALTH

Visit Us Today



RATTLESNAKE
CLUB

Greenhouse Restaurant & Café

www.RattlesnakeClubReno.com

775.384.2470 | 606 West Plumb Ln, Reno, NV 89509

YOUR COMFORT IS OUR NUMBER ONE CONCERN.

SIERRA AIR INC.

HEATING • COOLING®

775-356-5566

We Sweat The Small Stuff

NV LIC 24522 • CA LIC 652354

sierraair.com

Periodical
Postage
Paid
Reno NV

COMING IN JANUARY

MASTERPIECE
— SANDITON —

Great Performances
"From Vienna:
The New Year's
Celebration 2020"

Antiques Roadshow Recut

David Chappelle:
The Mark Twain Prize

