



**MONTANA
P B S**

MAY 2018

Clifford The Big Red Dog goes on tour!

» See page 31 for details



NOVA Wonders

▶ *Airs 8pm Wednesdays*

Journey to the frontiers of science, where researchers are tackling some of the biggest questions about life and the cosmos in this six-part mini-series.

▶ *See story, p. 2*

MontanaPBS Guide

MAY 2018 • VOL. 31 • NO. 11

COPYRIGHT © 2018 MONTANAPBS, ALL RIGHTS RESERVED

MEMBERSHIP 1-866-832-0829 **SHOP** 1-800-406-6383 **EMAIL** membership@montanapbs.org
WEBSITE www.montanapbs.org **ONLINE VIDEO PLAYER** watch.montanapbs.org

The Guide to MontanaPBS is printed monthly by the Bozeman Daily Chronicle for MontanaPBS and the Friends of MontanaPBS, Inc., a nonprofit corporation (501(c)3) P.O. Box 10715, Bozeman, MT 59719-0715. The publication is sent to contributors to MontanaPBS. Basic annual membership is \$35. Nonprofit periodical postage paid at Bozeman, MT.

PLEASE SEND CHANGE OF ADDRESS INFORMATION TO:
 MontanaPBS Membership, P.O. Box 173345, Bozeman, MT 59717

KUSM-TV

P.O. Box 173340 · Montana State University
 Bozeman, MT 59717-3340
OFFICE (406) 994-3437 **FAX** (406) 994-6545
E-MAIL kusm@montanapbs.org

BOZEMAN STAFF

INTERIM GENERAL MANAGER Aaron Pruitt
**INTERIM DIRECTOR OF CONTENT/
 CHIEF OPERATOR** Paul Heitt-Rennie
SENIOR DIRECTOR OF DEVELOPMENT Crystal Beaty
MEMBERSHIP/EVENTS MANAGER Erika Matsuda
DEVELOPMENT ASST. Norma Ardesson, Markie
 DeRudder, Molly Kisthart, Victoria Schofield
OFFICE/CUSTOMER SERVICE Dani Goranson
DIRECTOR OF EDUCATIONAL SERVICES Chris Seifert
DIRECTOR OF TECHNOLOGY Dean Lawver
DIRECTOR OF FINANCE Carol Farris
DIRECTOR OF PRODUCTION Scott Sterling
BROADCAST OPERATIONS MANAGER Keith Jacoby
DIGITAL CONTENT & MARKETING MANAGER Laura Dick
GUIDE PRODUCTION MSU Creative Services

KUFM-TV

PARTV 180 · The University of Montana
 Missoula, MT 59812
OFFICE (406) 243-4101 **FAX** (406) 243-3299
E-MAIL kufm@montanapbs.org

MISSOULA STAFF

GENERAL MANAGER Ray Ekness
PROGRAM ASSISTANT Sue Ginn

Friends of MontanaPBS Board OFFICERS

CHAIR Dax Schieffer, Bozeman; **VICE CHAIR** Sally
 Maison, Bozeman; **PAST CHAIR** Nancy Cornwell,
 Bozeman; **SECRETARY** Michele Robinson, Butte;
TREASURER Barbara Berens, Missoula

MEMBERS

BOZEMAN Aaron Pruitt **BILLINGS** Margaret Mac-
 Donald; **GREAT FALLS** Bill Beecher, Katie Kotynski;
HELENA Kirk J. Miller, Bruce Whittenberg; **KALIS-
 PELL** Tony Brockman; **MISSOULA** Ray Ekness, Peggy
 Kuhr, Sue Malek; **WHITEFISH** Betsy Cox, Louisa S.
 Nye; **UM MISSOULA** Bobbie Evans; **MSU BOZEMAN**
 Terry Leist

A SERVICE OF



Channel Guide

	16.1	16.2	16.3	16.4	16.5
Mont. Capitol Coverage					
MontanaPBS World					
MontanaPBS Create					
MontanaPBS Kids					
MontanaPBS HD					
Billings	16.1	16.2	16.3	16.4	16.5
Butte/Bozeman	9.1	9.2	9.3	9.4	9.5
Great Falls	21.1	21.2	21.3	21.4	21.5
Helena	10.1	10.2	10.3	10.4	10.5
Kalispell	46.1	46.2	46.3	46.4	46.5
Missoula	11.1	11.2	11.3	11.4	11.5

ADDITIONAL OVER-THE-AIR TV CHANNELS FOR MONTANAPBS

- 17 Paradise & Shields River Valleys
- 20 Belgrade & Springhill Community
- 20 Billings
- 27 Emigrant & Chico Hot Springs
- 40 Sweet Grass Hills; Liberty, Toole & Hill Counties
- 49 Helena
- 63 Bridger, Fromberg and Belfry

Table of Contents

- 3 FEATURED THIS MONTH**
Memorial Day Specials
- 4 MADE IN MONTANA**
5 M-M Backroads of Montana: Speed of Sound
- 6 EVENING & OVERNIGHT** MontanaPBS & World
7 First Civilizations
9 Nature: Natural Born Rebels
11 MontanaPBS Film Classics: The Big Sleep
13 Masterpiece: Little Women
15 American Masters: Bombshell: The Hedy Lamarr Story
17 **M-M** 11th & Grant: Wylie and the Wild West
19 Great Performances: The Opera House
21 MontanaPBS Film Classics: Singin' in the Rain
- 22 WEEKDAY PROGRAMMING** MontanaPBS
- 23 WEEKEND PROGRAMMING** MontanaPBS
- 24 CHILDREN'S PROGRAMMING** MontanaPBS
Pinkalicious & Peterrific
- 25 A-Z PROGRAM LISTING** MontanaPBS & World
- 28 A-Z PROGRAM LISTING** Create
Joanne Weir's Plates and Places
- 29 MONTANAPBS KIDS CHANNEL PROGRAMMING**
- 30 BUSINESS PARTNERS**
- 32 The Great American Read**

MONTANAPBS PROGRAM GUIDE On the Cover



COURTESY OF SHUTTERSTOCK

NOVA Wonders

These six hours reveal how far we've come in our search for answers, how we managed to get here, and how scientists hope to push our understanding of the universe even further.

▶ What's Living in You?

8pm Wednesday, May 2 Also 5/4 1:09am, 4:04am; 5/6 mdnt; 5/7 noon
 Discover how a world of microbes living in and on you can make you sick—and keep you healthy.

▶ Are We Alone?

8pm Wednesday, May 9 Also 5/11 1:09am, 4:03am; 5/13 mdnt; 5/14 noon
 Join astronomers and engineers on a hunt for life on worlds near and far.

▶ Can We Build a Brain?

8pm Wednesday, May 16 Also 5/18 1am, 4am; 5/20 mdnt; 5/21 noon
 Decode the latest advances in artificial intelligence. AI can interpret emotions, play games, even act as personal companions.

▶ Can We Make a Life?

8pm Wednesday, May 23 Also 5/25 1am, 4am; 5/27 mdnt; 5/28 noon
 Discover the breakthroughs in genetic engineering enabling scientists to create and manipulate DNA as never before.

▶ What's the Universe Made Of?

8pm Wednesday, May 30 Also 6/1 1am, 4am
 Peer into the deepest unknowns of the universe to explore the mysteries of dark matter and dark energy.

Cover images courtesy of Shutterstock

Featured this month

Find your community *MontanaPBS HD* and *MontanaPBS World* channels,
See page 2 or go to www.montanapbs.org/about/broadcast-area

JUSTIN LUBKE



Marine Captain and helicopter pilot Blake Smith smiles as he congratulates a fellow veteran on a big catch in *Not Yet Begun to Fight*.

COURTESY OF CAPITAL CONCERTS



Joe Mantegna (left) and Gary Sinise (right) co-host the 29th annual broadcast of this night of remembrance.

BACKROADS OF MONTANA PRODUCTION CREW



Lester Eck stands in front of the Montana Veterans Memorial in Great Falls.

MEMORIAL DAY SPECIALS

M·M Not Yet Begun to Fight

► *Airs 6pm Sunday, May 27*

Also 5/29 3am

When retired Marine Colonel Eric Hastings returned to Montana in 1969 from his tours in Vietnam, to a nation decades from diagnosing PTSD, he went straight to the water. He tied a fly to a line and cast. The river, he says, healed him. Forty years later, with the Rocky Mountains piercing the clear sky on all sides, the Colonel waits anxiously on a Montana tarmac. A Marine C5 jet touches down and comes to a stop before him. When the hatch opens, five young veterans cautiously emerge with wheel chairs, crutches and tight smiles, and the Colonel recognizes their nightmare. He states it plainly: "Combat taints your soul."

The Colonel embraces each of these young men in the only way he knows how. He and the guides quietly teach the warriors the essence of fly fishing—the practice of catch-and-release—which runs counter to their violent experience in combat. As the warriors gently recover the struggling trout and release them back into the water, unharmed, the Colonel believes they will be transformed just as he was back in 1969.

National Memorial Day Concert

► *Airs 7pm and 9pm Sunday, May 27*

Also 5/29 1am, 4am

This year will mark the 29th annual broadcast of the *National Memorial Day Concert*, bringing us together as one family of Americans to honor the service and sacrifice of our men and women in uniform, military families and all those who have given their lives for our country. The concert features acclaimed actors Joe Mantegna and Gary Sinise and an all-star lineup of actors and musicians, along with top pops conductor Jack Everly and the National Symphony Orchestra. This tribute to our military airs live from the West Lawn of the U.S. Capitol before an audience of hundreds of thousands, a broadcast audience of millions and to our troops around the world via American Forces Network.

M·M Backroads of Montana Special: A Salute to Veterans

► *Airs 5pm Saturday, May 26*

Also Memorial Day, Sunday, May 27 10am, 8:30pm

Join host William Marcus as Backroads of Montana re-visits their favorite stories featuring Montana's veterans. Stories of the Great Falls Veteran's Memorial, a senior citizen weightlifter and Korean War veteran, the Native American Soldier Monument in Crow Agency and veteran and bugler Ray Zell are featured on the special program.

Produced by MontanaPBS



MONTANA
PBS

Made in Montana

MontanaPBS continues to tell the story of our state—past and present—with award winning television productions. Programs like *Backroads of Montana*, *Indian Relay*, *Fort Peck Dam* and *Butte, America* help our citizens thoughtfully reflect on the colorful history of our state, the majesty of our shared landscape and our unique people and cultures. Programs such as *Montana Ag Live*, *Concussion: Answers in the Blood?*, *Degrees of Difference* and many others foster important discussion about current issues.

POSIE BUFFINGTON



M·M *Montana Jails Slammed for Solutions*

► *Airs 7:30pm Thursday, May 17*
Also 5/20 10am

Many Montana jails are overcrowded, and 90 percent of inmates are charged with an addiction-related offense. The State is trying to break the pattern of addiction and jail time. These alternative programs alleviate jail overcrowding, but how effective are they in breaking the pattern of re-offending?

Pictured: Laura Bishop listens during a meeting at an alternative treatment facility in Glendive. After multiple DUIs, Bishop was sent to this locked-down facility to address her alcohol issues in lieu of serving time in the county jail.

GREATER MONTANA FOUNDATION PRESENTS: PRIMARY DEBATE

• *Republicans for U.S. Senate (2018)*

Republican candidates running in the Primary election in June with an eye toward replacing Montana's Democratic incumbent, Jon Tester, as U.S. Senator will gather for a debate and discussion of the issues. *Airs Sunday, 5/6 at 8:00am*

• *Democrats for U.S. House (2018)*

Democratic candidates running in the Primary election in June with an eye toward replacing Montana's Congressman, Republican incumbent Greg Gianforte, as U.S. Representative will gather for a debate and discussion of the issues. *Airs Sunday, 5/13 at 8:00am*

Montana Jails Slammed for Solutions

Many Montana jails are overcrowded, and 90 percent of inmates are charged with an addiction-related offense. *Airs Thursday, 5/17 at 7:30pm, Sunday, 5/20 at 10am* ► *See photo above*

Celebrate America Across Montana: Tim Janis with State School Choirs (2018)

Tim Janis performs with students from Montana school music programs including Anaconda, Big Fork, Choteau, Corvallis, Great Falls Central, Frenchtown, Hamilton, Hardin, Manhattan, Mount Ellis Academy, Powell County, Power, and Sacajawea Middle School. *Airs Thursday, 5/3 at 7:12pm, Sunday, 5/6 at 10:10am* ► *See photo, p. 8*

THE RUNDOWN WITH BETH SABOE

- ***Patients in Waiting, pt 2*** In this episode, the extreme shortage of mental health services in Montana is explored. Without help, where will patients dealing with mental health issues turn? *Airs Thursday, 5/3 at 6:59pm, Sunday, 5/6 at 9:58am* ► *See photo, p. 6*
- ***Enemy On Our Shores*** In 2016, evidence of invasive zebra and quagga mussels was detected in a handful of Montana waterbodies for the first time. *Airs Thursday, 5/31 at 7pm, Sunday, 06/03 at 10am* ► *See photo, p. 20*

Keepers of the Land: Three Montana Families & Their Homestead Legacies

The Homestead Act of 1862 remains one of the most significant and enduring events in settling the western United States. The chance for free land and opportunity proved irresistible to many, and in the following decades, 151,600 homesteads had been claimed in Montana, the most out of any state. *Keepers of the Land* is about three Montana families still living and working the land their ancestors homesteaded more than a century ago. *Airs Sunday, 5/13 at 10am*

Not Yet Begun to Fight When retired Marine Colonel Eric Hastings returned home to Montana from Vietnam in 1969 to a nation decades away from diagnosing PTSD, he went to the water. He tied a fly onto a line and cast. The river, he says, healed him. Hastings reaches out to five men, a new generation returning from war. He brings them to the river and shares his secret: there are places where you can still be consumed by a simple act, find joy in a fight, and be redeemed as you gently release another creature, unharmed, into quiet waters. *Airs Sunday, 5/27 at 6pm, Tuesday, 5/29 at 3am*

MONTANA MOSAICS: 20TH CENTURY PEOPLE AND EVENTS

- ***History of Montana's Native Americans*** This episode details the Federal and State policies that sought to strip Native Americans of their culture and traditions, such as the mandatory boarding schools for Indian children and a policy of re-locating adult Native Americans to jobs in the cities. *Airs Thursday, 5/31 at 7:30pm*



The Dirt On Montana Soil Changes Clain Jones, MSU Extension soil scientist, discusses the change from Montana's high pH soils to acid soils in several Montana counties, and why it is occurring at an alarming rate. *Airs Sunday, 5/6 at 11:02am*

Where Would We Be Without Bees? Michelle Flenniken, MSU research scientist, discusses methods used to make Montana's honeybee population healthier, and also looks at the importance of bees in production agriculture. *Airs Sunday, 5/6 at 6pm, Sunday, 5/13 at 11am*

Another Cropping System Angle Pat Carr, Agronomist at MSU's Central Ag Research Center at Moccasin, looks at incorporating traditional warm season crops into Montana's traditional cool season cropping systems. *Airs Sunday, 5/13 at 6pm, Sunday, 5/20 at 11am*

Nafta: How Does It Affect Montana's Ag Community? Joe Janzen, Ag Economist at MSU, fields questions on how NAFTA (North American Free Trade Agreement) affects Montana's agricultural community. *Airs Sunday, 5/20 at 6pm*



Little Jane & the Pistol Whips Led by the powerful songwriting panache of Ashly Holland, Livingston band Little Jane and the Pistol Whips expertly braids the style of early country into their own unique blend of Montana made Americana. *Airs Thursday, 5/10 at 7pm, Saturday, 5/12 at 9:50pm, Monday, 5/14 at 2am*

► See photo, p. 12

Wylie & the Wild West Horseman, singer, songwriter, and world famous Yahoo! yodeler Wylie Gustafson shares his Big Sky spirit straight from the empty sprawl of northern Montana. *Airs Thursday, 5/24 at 7pm, Saturday, 5/26 at 9:50pm, Monday, 5/28 at 2am* ► See story, p. 17



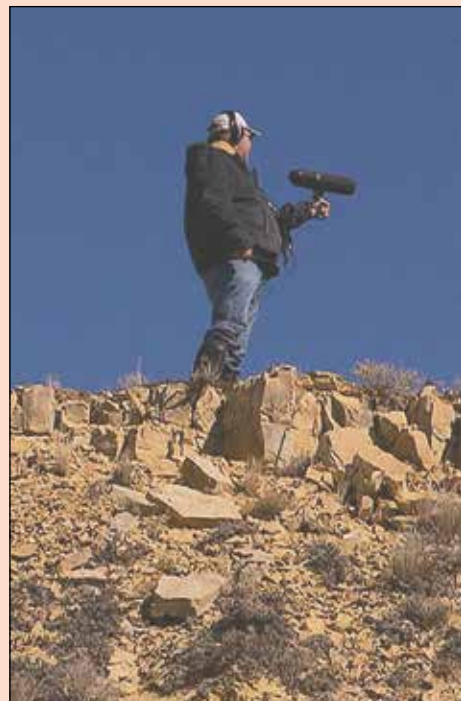
Singing in the Wires The 50 students at Greenfield School in Fairfield are energetic and bright. We'll spend a day with Lunch Lady Salley Young as she prepares a special meal that's 100 percent Montana made. In Kalispell, we switch into the world of antique phones, with a man whose collecting began with his career as an installer with the phone company. He's proof that it pays to "keep the old stuff." We'll veer off the road to some of Montana's beautiful lakes and ponds to observe the springtime ritual of birds' courtship dances. And we'll meet a man in Fort Benton whose skill in crafting musical instruments is only surpassed by his generous spirit. *Airs Saturday, 5/5 at 5pm*

Paintings, Partials and Pies Follow competitors in the cherry pit spitting and cherry pie eating contests at the Flathead Cherry Festival in Polson. Learn the story of Hobson dentist Virgil Stewart who began his practice in 1912. Hike into the Sweet Grass Hills where an unexpected natural wonder rises out of the prairie. And meet an eastern Montana man whose passion for art has literally spread all over the town of Forsyth. *Airs Saturday, 5/12 at 5pm*

Speed of Sound This episode tells stories from across Big Sky Country. *Airs Monday, 5/14 at 8pm, Thursday, 5/17 at 7pm, Saturday, 5/19 at 5pm, Sunday, 5/20 at 10:30am* ► See story, right

Rich with Tradition On this episode, we visit Virginia City for the final chapter in one of Montana's infamous legends. We meet folks who stop in the small town of Ravalli for a big treat. There's all manner of mystery and no shortage of smiles as folks find their way through a corn maze near Bozeman. We meet a Glasgow man who changed careers and found success. *Airs Monday, 5/14 at 8:30pm*

Special Presentation: A Salute to Veterans Join host William Marcus as Backroads of Montana re-visits their favorite stories featuring Montana's veterans. *Airs Saturday, 5/26 at 5pm, Sunday, 5/27 at 10am, Sunday, 5/27 at 8:30pm* ► See story, p. 3



GUS CHAMBERS

Patrick Wilkinson searches for a mysterious sound near Vida, Montana.

M-M

BACKROADS OF MONTANA Speed of Sound

► *Airs 8pm Monday, May 14 and 7pm Thursday, May 17*
Also 5/19 5pm; 5/20 10:30pm

A Baker man works to bring the growing "Fastest Gun in the West" shooting sport to Montana. In a small Montana town between Circle and Wolf Point, the residents of Vida go in search of a mysterious sound. On our search, we hear the history and sense of community in Vida. The Home Café in Conrad has treated guests to a succulent turkey dinner and all the fixings every Tuesday night for more than 60 years. The Garden of 1000 Buddhas near Arlee hopes to awaken your inner peace, joy, wisdom and compassion. Backroads' host William Marcus visits "The Attic" thrift shop where volunteers of the Glendive Medical Center Auxiliary work to improve their local hospital.

4:30 **WORLD** Second Opinion: ADHD in Adults
5:00 **First Civilizations: Religion**
5:00 **WORLD** Global 3000
5:30 **WORLD** Focus On Europe
6:00 **SEE DAYTIME SCHEDULE, P. 22**

PM EVENING

5:30 **Nightly Business Report**

6:00 **PBS NewsHour**

6:00 **WORLD** NOVA Wonders:
What's Living in You? TV-PG

6:59 **M-M** **The Rundown with Beth Saboe** "Patients in Waiting, pt 2" In this second episode of "Patients in Waiting," News & Public Affairs producer Beth Saboe examines the extreme shortage of mental health services in Montana. Except for Yellowstone county, the entire state is considered a mental health provider shortage area, and recent statewide budget cuts could further cripple people's access to vital services.

► *See photo, p. 6*

7:00 **WORLD** Power to Heal: Medicare and the Civil Rights Revolution TV-PG

7:12 **M-M** **Celebrate America Across Montana** "Tim Janis with State School Choirs (2018)" School choirs from throughout Montana perform with Tim Janis in this special created to spotlight our nation's youth, and pull communities together in an uplifting and inspiring celebration of music. TV-G ► *See photo, p. 8*

8:00 **WORLD** PBS NewsHour

8:05 **Doc Martin** "Ever After" Mrs. Tishell's long-standing crush on Dr. Martin Ellingham takes a dramatic turn. TV-PG

8:53 **Masterpiece Mystery!** "Death Comes to Pemberley" Six years after "Pride and Prejudice," Elizabeth and Darcy plan a ball with fatal consequences. TV-14 ► *See photo, p. 10*

9:00 **WORLD** Nightly Business Report

9:30 **WORLD** Scully/The World Show TV-G

10:00 **WORLD** NOVA: Search for the Super Battery TV-G

10:18 **BBC World News**

10:48 **Amanpour On PBS**

11:00 **WORLD** NOVA Wonders:
What's Living in You? TV-PG

11:16 **Beyond 100 Days**

11:45 **Closer to Truth** "Can Brain Alone Explain Consciousness?" Can physical facts about the brain account for mental experiences of the mind? TV-G

FRIDAY

MAY 4

AM EARLY MORNING

MDNT **WORLD** Power to Heal: Medicare and the Civil Rights Revolution

12:12 **Truth About Money** with Ric Edelman

12:40 **NHK Newline**

1:00 **WORLD** PBS NewsHour

1:09 **NOVA Wonders: What's Living in You?**

2:00 **WORLD** Nightly Business Report

2:07 **NOVA: Search for the Super Battery**

2:30 **WORLD** Amanpour On PBS

3:00 **WORLD** Act of Dog

3:05 **Nature: Natural Born Rebels: Survival**

3:30 **WORLD** Stories from the Stage:
Holiday Horror

4:00 **WORLD** Well Read: Dr. Larry Brilliant,
Sometimes Brilliant

4:04 **NOVA Wonders: What's Living in You?**

4:30 **WORLD** Closer to Truth: God's
Sovereignty: A Tribute to Hugh McCann

5:00 **WORLD** Newsroom Tokyo

5:02 **NOVA: Search for the Super Battery**

5:45 **WORLD** Direct Talk

6:00 **SEE DAYTIME SCHEDULE, P. 22**

PM EVENING

5:30 **Nightly Business Report**

6:00 **PBS NewsHour**

7:00 **Washington Week**

7:00 **WORLD** Civilizations: God and Art TV-PG

7:30 **In Principle**

8:00 **Live from Lincoln Center**

"Stephanie J. Block in Concert"
Stephanie J. Block unleashes her immense voice and bold charisma for a special night of cabaret. TV-G

8:00 **WORLD** PBS NewsHour

9:00 **The Jazz Ambassadors**

Dizzy Gillespie and other jazz greats combated racially charged Soviet propaganda through their music. TV-PG

9:00 **WORLD** Nightly Business Report

9:30 **WORLD** Asia Insight

10:00 **BBC World News**

10:00 **WORLD** Story of China: Ancestors/Silk
Roads and China Ships TV-PG

10:30 **Amanpour On PBS**

11:00 **Scully/The World Show** TV-G

11:30 **Art Wolfe's Travels to the Edge**

"Antarctica and the Falkland Islands"
Art crosses the treacherous Drake Passage in search of penguins, seal pups and other wildlife. TV-G



COURTESY OF PBS

First Civilizations

Explore the seedbed civilizations of Mesoamerica, the Middle East and the Indus Valley to learn how and why early humans, who had been mobile foragers, created villages, towns, cities and states, establishing the blueprint for the modern world.

► **Religion**

8pm Tuesday, May 1 Also 5/3 2am, 5am

Discover the secret to the stability and cohesion of Ancient Egypt—religion. When people share a core set of beliefs, they are more likely to identify as one. That was true for the first civilizations and it's just as true today.

► **Cities**

8pm Tuesday, May 8 Also 5/10 2am, 5am

View the birthplace of civilization: the Middle East, site of the world's first villages, towns and cities, from the hills of Turkey to the plains of Iraq. They were crucibles of invention and innovation—turbo-charging the pace of progress.

► **Trade**

8pm Tuesday, May 15 Also 5/17 2am, 5am

Examine an ancient civilization unlike any other, that of the Indus Valley. Rather than imposing order through war or religion, it relied on the free flow of trade. The exchange of goods promoted wealth, co-operation and trust.

Evening & Overnight

M-M Made in Montana, see pp. 4-5

PL Pledge programming

SATURDAY

MAY 5

AM EARLY MORNING

- mdnt Truth About Money with Ric Edelman
 MDNT WORLD Civilizations: God and Art
 12:30 Overheard with Evan Smith: Congressman Seth Moulton
 1:00 Age Wise: How to Age in Place
 1:00 WORLD PBS NewsHour
 1:30 To the Contrary with Bonnie Erbe
 2:00 Open Mind: Representing Us
 2:00 WORLD Nightly Business Report
 2:30 This Is America & The World
 2:30 WORLD Amanpour On PBS
 3:00 Washington Week
 3:00 WORLD POV: Web Junkie
 3:30 Market to Market
 4:00 The This Old House Hour
 4:00 WORLD Second Opinion: ADHD in Adults
 4:30 WORLD Consuelo Mack WealthTrack
 5:00 IQ: smartparent: Tech, Stress, and Depression
 5:00 WORLD To the Contrary with Bonnie Erbe
 5:30 Super Why!
 5:30 WORLD Washington Week
 6:00 **SEE WEEKEND SCHEDULE, P. 23**

PM EVENING

- 6:00 The Lawrence Welk Show**
 "Salute to Cole Porter (1973)" "Wonderbar" and "The Continental" are performed in a sparkling tribute to the music of Cole Porter. TV-G
- 6:00 WORLD The Jazz Ambassadors TV-PG
- 7:00 Last of the Summer Wine**
 "Brushes at Dawn" Compo is stunned to catch Nora Batty in a church hall closet with Billy Chiselhurst. Realising he has a rival for her affections, he challenges Billy to a duel at dawn. TV-PG
- 7:00 WORLD We Knew What We Had: The Greatest Jazz Story Never Told TV-G
- 7:31 Still Open All Hours** There are mysterious sightings in the shop and Granville is convinced the place is haunted by Arkwright. TV-PG
- 8:00 WORLD America Reframed: Unbroken Glass TV-PG
- 8:02 MontanaPBS Film Classics**
 "The Big Sleep" Raymond Chandler's private eye Philip Marlowe follows two wealthy sisters through a maze. TV-PG > **See story, p. 11**

9:00 WORLD I Am TV-G

10:00 Austin City Limits "Ed Sheeran" Singer-songwriter and pop sensation Ed Sheeran performs hits and songs from his latest album. TV-PG

10:00 WORLD The Jazz Ambassadors TV-PG

11:00 The Kate "Darlene Love" Rock and Roll Hall of Fame inductee Darlene Love performs "Da Do Ron Ron" and "He's a Rebel." TV-PG

11:00 WORLD We Knew What We Had: The Greatest Jazz Story Never Told TV-G

SUNDAY

MAY 6

AM EARLY MORNING

- mdnt NOVA Wonders: What's Living in You?
 MDNT WORLD America Reframed: Unbroken Glass
 1:00 Nature: Natural Born Rebels: Survival
 1:00 WORLD I Am
 2:00 Last Tango In Halifax
 2:00 WORLD Pacific Heartbeat: Poi E: The Story of Our Song
 3:00 Eisenhower's Secret War: From Warrior to President
 3:00 WORLD Defining Hope
 4:00 World on the Brink
 4:00 WORLD On Story: Script to Screen: Arrival
 4:30 WORLD To the Contrary with Bonnie Erbe
 5:00 Americas Now: Colombia: Farc's Return to Civil Life/Panama
 5:00 WORLD Washington Week
 5:30 Curious George
 5:30 WORLD Open Mind
 6:00 **SEE WEEKEND SCHEDULE, P. 23**

PM AFTERNOON/EVENING

- 3:00 In Our Son's Name** After losing their son on September 11, 2001, a grieving couple begin a journey of reconciliation. TV-G
- 3:00 WORLD America Reframed: Unbroken Glass TV-PG
- 4:00 Nobody Dies: A Film About a Musician, Her Mom And Vietnam** Indie singer-songwriter Thao Nguyen journeys to Vietnam for the first time and brings her mother. TV-G
- 4:00 WORLD I Am TV-G
- 4:30 Downton Abbey Season 2 On Masterpiece** "Episode 2" Downton becomes a convalescent home with Thomas in charge. Lavinia and Richard's secret comes out. TV-PG
- 5:00 WORLD Resistance at Tule Lake
- 5:30 PBS NewsHour Weekend**
- 6:00 M-M Montana AG Live** "Where Would We Be Without Bees?" Making Montana's honeybee population healthier. TV-G > **See p. 5**
- 6:00 WORLD Nature: Natural Born Rebels: Survival TV-PG

AARON PRUITT



M-M Celebrate America Across Montana

> **Airs 7:12pm Thursday, May 3** Also 5/610:10am

The program was taped in January 2018 at the KUSM-MontanaPBS studio in Bozeman. School buses brought hundreds of students from Montana school music programs including Anaconda, Bigfork, Choteau, Corvallis, Frenchtown, Great Falls Central Catholic, Hamilton, Hardin, Manhattan, Mount Ellis Academy, Powell County, Power and Sacajawea. Well-prepared and very professional, each choir came into the studio to record their performance. Tim Janis, familiar to public broadcasting audiences from programs such as An Enchanted Evening, Beautiful America and Coastal America, is well known for his "Music with a Mission" philosophy, and has worked on many philanthropic projects. Pictured: Bigfork Choir

- 7:00 Call the Midwife** The closing of a nearby maternity home brings an influx of expectant mothers to the midwives. TV-14
- 7:00 **WORLD** Wild Weather TV-G
- 8:00 Unforgotten Season 2 On Masterpiece** "Episode 2" The victim's life comes into focus and it was a mess. Meanwhile, Sara's scandalous past is revealed. TV-14
- 8:00 **WORLD** Doc World: Finding Samuel Lowe TV-PG
- 9:30 Tale of Two Sisters** "Amelia Earhart" After Amelia Earhart's plane disappeared in 1937, her sister Muriel, kept Amelia's spirit alive. TV-PG
- 9:30 **WORLD** Act of Dog TV-PG
- 10:00 **WORLD** Nature: Natural Born Rebels: Survival TV-PG
- 10:30 Capital** TV-PG
- 11:00 **WORLD** Wild Weather TV-G
- 11:30 Osiris REX: Countdown to Launch** Scientists and engineers work to design, construct and deliver the OSIRIS-REx spacecraft to NASA. TV-G

MONDAY

MAY 7

AM EARLY MORNING

- mdnt Doc Martin: Ever After
- MDNT **WORLD** Doc World: Finding Samuel Lowe
- 1:00 **Austin City Limits**: Ed Sheeran
- 1:30 **WORLD** Act of Dog
- 2:00 **Celtic Nights**: Oceans of Hope
- 2:00 **WORLD** Story of China: Ancestors/Silk Roads and China Ships
- 3:00 **Live from Lincoln Center**: Stephanie J. Block in Concert
- 4:00 **The Jazz Ambassadors**
- 4:00 **WORLD** Overheard with Evan Smith
- 4:30 **WORLD** Open Mind
- 5:00 **Infinity Hall Live**: Sister Sparrow & The Dirty Birds
- 5:00 **WORLD** Newsroom Tokyo
- 5:45 **WORLD** Direct Talk
- 6:00 **SEE DAYTIME SCHEDULE, P. 22**

PM EVENING

- 5:30 Nightly Business Report**
- 5:30 **WORLD** Roadtrip Nation: Cross the Ocean, Build Bridges TV-PG
- 6:00 PBS NewsHour**
- 6:00 **WORLD** Pacific Heartbeat: Making Good Men TV-G
- 7:00 Antiques Roadshow** "Green Bay, hr 3" Discover Green Bay treasures including a Belle Epoque diamond necklace and 1954 baseball cards. TV-G
- 7:00 **WORLD** Local USA: Ku Kanaka: Stand Tall
- 7:30 **WORLD** Stories from the Stage: Kitchen Confessions TV-PG

- 8:00 Antiques Roadshow** "Charleston, hr 3" A 1890 Frederic Remington watercolor and a 1970 Jimi Hendrix collection are appraised. TV-G
- 8:00 **WORLD** PBS NewsHour
- 9:00 Independent Lens** "No Man's Land" Anti-government protestors took over Oregon's Malheur National Wildlife Refuge in 2016. TV-14-V
- 9:00 **WORLD** Nightly Business Report
- 9:30 **WORLD** To the Contrary with Bonnie Erbe
- 10:00 **WORLD** Roadtrip Nation: Don't Forget Where You Came From TV-PG
- 10:30 BBC World News**
- 10:30 **WORLD** Roadtrip Nation: Cross the Ocean, Build Bridges TV-PG
- 11:00 Amanpour On PBS**
- 11:00 **WORLD** Pacific Heartbeat: Making Good Men TV-G
- 11:30 Beyond 100 Days**

TUESDAY

MAY 8

AM EARLY MORNING

- mdnt Truth About Money with Ric Edelman
- MDNT **WORLD** Local USA: Ku Kanaka: Stand Tall
- 12:30 **NHK Newsline**
- 12:30 **WORLD** Stories from the Stage: Kitchen Confessions
- 1:00 **Unforgotten Season 2 On Masterpiece**: Episode 2
- 1:00 **WORLD** PBS NewsHour
- 2:00 **WORLD** Nightly Business Report
- 2:30 **Articulate with Jim Cotter**: The Charming Incongruities of Kevin Barnes
- 2:30 **WORLD** Amanpour On PBS
- 3:00 **Call the Midwife**
- 3:00 **WORLD** Resistance at Tule Lake
- 4:00 **Unforgotten Season 2 On Masterpiece**: Episode 2
- 4:00 **WORLD** Consuelo Mack WealthTrack
- 4:30 **WORLD** Asia Insight
- 5:00 **WORLD** Newsroom Tokyo
- 5:30 **Travel Detective with Peter Greenberg**: Hidden Gems of Jordan
- 5:45 **WORLD** Direct Talk
- 6:00 **SEE DAYTIME SCHEDULE, P. 22**

PM EVENING

- 5:30 Nightly Business Report**
- 6:00 PBS NewsHour**
- 6:00 **WORLD** America Reframed: Finding Kukan
- 7:00 Civilizations** "Encounters" Advances in seafaring and a thirst for trade and exploration sent human beings around the planet. TV-PG
- 7:00 **WORLD** POV: Ai Weiwei: The Fake Case TV-14
- 8:00 First Civilizations** "Cities" The Middle East, the birthplace of civilization and the site of the world's first cities are explored. TV-PG > **See story, p. 7**
- 8:00 **WORLD** PBS NewsHour



COURTESY OF © BBC

Portrait of white sulphur-crested cockatoo in Sydney, Australia.

NATURE

Natural Born Rebels

Meet nature's greatest rebels. Across the world new studies are uncovering an astonishing variety of rebellious animal behaviors, and despite how it appears on the surface, researchers are discovering the complex and fascinating science behind why these animals behave the way they do.

► **Survival**

7pm Wednesday, May 2

Also 5/4 3:05am, noon; 5/6 1am

Some animals will do whatever it takes to survive. Cockatoos turn to vandalism, boxer crabs hold anemones hostage, sloths become filthy, puff adders have an 'invisibility cloak' to hide themselves, and chimps use violence to stay in power.

► **The Mating Game**

7pm Wednesday, May 9

Also 5/11 3:05am, noon; 5/13 1am

Getting ahead in the mating game requires some astonishing behavior—from promiscuous prairie dogs, to backstabbing manakins, kidnapping macaques, and hyenas with a bad case of sibling rivalry.

Evening & Overnight

M-M Made in Montana, see pp. 4-5 **PL** Pledge programming

9:00 Frontline

9:00 **WORLD** Nightly Business Report

9:30 **WORLD** Global 3000 TV-G

10:00 BBC World News

10:00 **WORLD** America Reframed:
Finding Kukan

10:30 Amanpour On PBS

11:00 Beyond 100 Days

11:00 **WORLD** POV: Ai Weiwei:
The Fake Case TV-14

11:30 Live at the Charleston Music

Hall "Elise Testone" Powerhouse vocalist Elise Testone is the perfect combination of soul, rock, attitude and restraint. TV-G

WEDNESDAY

MAY 9

AM EARLY MORNING

mdnt Truth About Money with Ric Edelman

MDNT **WORLD** POV: My Love, Don't Cross
That River

12:30 NHK Newline

1:00 Independent Lens: No Man's Land

1:00 **WORLD** PBS NewsHour

2:00 **WORLD** Nightly Business Report

2:30 Protecting Paradise:
The Western Everglades

2:30 **WORLD** Amanpour On PBS

3:00 Antiques Roadshow: Green Bay, hr 3

3:00 **WORLD** We Knew What We Had:
The Greatest Jazz Story Never Told

4:00 Antiques Roadshow: Charleston, hr 3

4:00 **WORLD** To the Contrary with Bonnie Erbe

4:30 **WORLD** Between The Lines with Barry
Kibrick: Sam Esmail

5:00 Chaplains, pt 2

5:00 **WORLD** Newsroom Tokyo

5:45 **WORLD** Direct Talk

6:00 **SEE DAYTIME SCHEDULE, P. 22**

PM EVENING

5:30 Nightly Business Report

5:30 **WORLD** Independent Lens:
No Man's Land TV-14-V

6:00 PBS NewsHour

7:00 Nature "Natural Born Rebels: The Mating Game" Promiscuous prairie dogs, backstabbing manakins, kidnapping macaques and hyenas are highlighted. TV-PG-S **> See story, p. 9**

7:00 **WORLD** Frontline

8:00 NOVA Wonders "Are We Alone?"

Astronomers and engineers use telescopes, probes and robots to hunt for life on worlds near and far. TV-PG **> See story, inside front cover**

8:00 **WORLD** PBS NewsHour

9:00 NOVA "Life's Rocky Start" NOVA goes around the world and back in time to investigate how minerals are vital to life. TV-G

9:00 **WORLD** Nightly Business Report

9:30 **WORLD** Focus On Europe

10:00 BBC World News

10:00 **WORLD** Independent Lens:
No Man's Land TV-14-V

10:30 Amanpour On PBS

11:00 Beyond 100 Days

11:30 MotorWeek TV-G

11:30 **WORLD** Stories in Thread TV-G

THURSDAY

MAY 10

AM EARLY MORNING

mdnt Truth About Money with Ric Edelman

MDNT **WORLD** Frontline

12:30 NHK Newline

1:00 Civilizations: Encounters

1:00 **WORLD** PBS NewsHour

2:00 First Civilizations: Cities

2:00 **WORLD** Nightly Business Report

2:30 **WORLD** Amanpour On PBS

3:00 Frontline

3:00 **WORLD** Wild Weather

4:00 Civilizations: Encounters

4:00 **WORLD** Scully/The World Show

4:30 **WORLD** Second Opinion:
Measles/Vaccines

5:00 First Civilizations: Cities

5:00 **WORLD** Newsroom Tokyo

5:45 **WORLD** Direct Talk

6:00 **SEE DAYTIME SCHEDULE, P. 22**

PM EVENING

5:30 Nightly Business Report

6:00 PBS NewsHour

6:00 **WORLD** NOVA Wonders:
Are We Alone? TV-PG

7:00 **M-M** 11th & Grant with Eric Funk

"Little Jane & The Pistol Whips" Led by the powerful songwriting panache of Ashly Holland, Livingston band Little Jane and the Pistol Whips expertly braids the style of early country into their own unique blend of Montana made Americana. TV-G **> See photo, p. 12**

7:00 **WORLD** Secrets of the Dead:
Vampire Legend TV-PG-V

8:00 Doc Martin "Sickness and Health" Portwenn is buzzing about the wedding of the Doc and Louisa. Will they finally tie the knot? TV-PG

8:00 **WORLD** PBS NewsHour

8:50 Masterpiece Mystery! "Masterpiece Mystery!, Death Comes to Pemberley" A suspect goes on trial for his life, while Elizabeth pursues the truth behind a mysterious death. TV-14 **> See photo, p. 10**

9:00 **WORLD** Nightly Business Report

MASTERPIECE MYSTERY!



Masterpiece Mystery! Death Comes to Pemberley

► Part 1 Airls 8:53pm Thursday, May 3

Six years after the end of *Pride and Prejudice*, Elizabeth and Darcy plan a ball—with fatal consequences. A family enemy takes charge of the case.

► Part 2 Airls 8:50pm Thursday, May 10

A suspect goes on trial for his life, while Elizabeth pursues the real truth behind a mysterious death. The future of Darcy's sister Georgiana also hangs in the balance.

9:30 WORLD Scully/The World Show TV-G
10:00 WORLD NOVA: Life's Rocky Start TV-G

10:15 BBC World News

10:45 Amanpour On PBS

11:00 WORLD NOVA Wonders:
Are We Alone? TV-PG

11:13 Beyond 100 Days

11:41 Closer to Truth "Can Enlarged Materialism Explain Consciousness?" Could there be more to materialism than the known laws of physics? TV-G

FRIDAY

MAY 11

AM EARLY MORNING

MDNT WORLD Secrets of the Dead:
Vampire Legend
12:11 Truth About Money with Ric Edelman
12:39 NHK Newline
1:00 WORLD PBS NewsHour
1:09 NOVA Wonders: Are We Alone?
2:00 WORLD Nightly Business Report
2:07 NOVA: Life's Rocky Start
2:30 WORLD Amanpour On PBS
3:00 WORLD Local USA: Ku Kanaka: Stand Tall
3:05 Nature: Natural Born Rebels:
The Mating Game
3:30 WORLD Stories from the Stage:
Kitchen Confessions
4:00 WORLD Well Read: Dr. Alexander McCall
Smith, Precious and Grace
4:03 NOVA Wonders: Are We Alone?
4:30 WORLD Closer to Truth:
Challenges of Analytic Theology
5:00 WORLD Newsroom Tokyo
5:01 NOVA: Life's Rocky Start
5:45 WORLD Direct Talk
6:00 SEE DAYTIME SCHEDULE, P. 22

PM EVENING

5:30 Nightly Business Report
6:00 PBS NewsHour
7:00 Washington Week
7:00 WORLD Civilizations: Encounters TV-PG
7:30 In Principle
8:00 Live from Lincoln Center "Andrew Rannells in Concert" Andrew Rannells brings his signature blend of vocal prowess and wry wit to a sparkling set of songs. TV-G
8:00 WORLD PBS NewsHour
9:00 Great Performances "Chita Rivera: A Lot of Livin' to Do" Legendary Broadway performer Chita Rivera has been lighting up the stage for over 70 years. TV-PG
9:00 WORLD Nightly Business Report
9:30 WORLD Asia Insight
10:00 BBC World News
10:00 WORLD Story of China: Golden Age/
The Ming TV-PG
10:30 Amanpour On PBS
11:00 Scully/The World Show TV-G

11:30 Art Wolfe's Travels to the Edge

"Brazil: The Pantanal" The world's largest wetland is home to one of the densest concentrations of wildlife on the planet. TV-G

SATURDAY

MAY 12

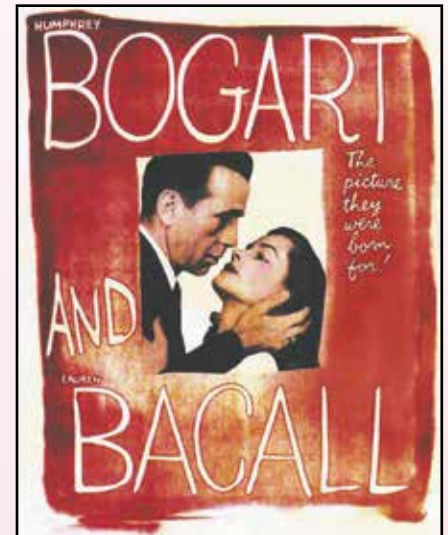
AM EARLY MORNING

mdnt Truth About Money with Ric Edelman
MDNT WORLD Civilizations: Encounters
12:30 Overheard with Evan Smith:
Walter Mosley, Author
1:00 Age Wise: Caregiving
1:00 WORLD PBS NewsHour
1:30 To the Contrary with Bonnie Erbe
2:00 Open Mind: Misinformation Crisis
2:00 WORLD Nightly Business Report
2:30 This Is America & The World
2:30 WORLD Amanpour On PBS
3:00 Washington Week
3:00 WORLD Roadtrip Nation: Don't Forget
Where You Came From
3:30 Market to Market
3:30 WORLD Roadtrip Nation:
Cross the Ocean, Build Bridges
4:00 The This Old House Hour
4:00 WORLD Second Opinion:
Measles/Vaccines
4:30 WORLD Consuelo Mack WealthTrack
5:00 iQ: smartparent: Career Exploration and
Virtual Job-Shadowing
5:00 WORLD To the Contrary with Bonnie Erbe
5:30 Super Why!
5:30 WORLD Washington Week
6:00 SEE WEEKEND SCHEDULE, P. 23

PM EVENING

6:00 The Lawrence Welk Show
"Mother's Day (1956)" Buddy Merrill plays "Blue Suede Shoes" and the Lennon Sisters sing "Kentucky Babe." TV-G
6:00 WORLD Tyrus Wong:
American Masters TV-PG
7:00 Last of the Summer Wine
"A Clean Sweep" TV-PG
7:30 WORLD Oregon's Animation Magic TV-G
7:31 Still Open All Hours "Special (Christmas 2015)" Granville bags himself a bargain Christmas tree, which gives him more problems than he wanted. Eric and Cyril embark on a new fitness regime. TV-PG
8:00 WORLD America Reframed:
Finding Kukan
8:02 MontanaPBS Film Classics
"Bringing Up Baby" A befuddled paleontologist is pursued by a flighty and often irritating heiress and her pet leopard. TV-PG
9:00 WORLD POV: Ai Weiwei:
The Fake Case TV-14

MONTANA PBS
FILM CLASSICS



APT ONLINE

The Big Sleep

► **Airs 8pm Saturday, May 5**
Also 5/6 1pm

The Big Sleep is the story of a private investigator, named Philip Marlowe, hired by a wealthy general to stop his youngest daughter, Carmen, from being blackmailed about her gambling debts; things almost immediately unravel and blow up from here, as Marlowe finds himself deep within a web of love triangles, blackmail, murder, gambling, and organized crime. Marlowe, with the help of the General's eldest daughter, Vivian, skillfully plot to free the family from this web and trap the main man, Eddie, behind much of this mischief to meet his end at the hands of his own henchmen.



APT ONLINE

Evening & Overnight

M·M Made in Montana, see pp. 4-5 **PL** Pledge programming

9:50 **M·M** 11th & Grant with Eric Funk

"Little Jane & The Pistol Whips"

Led by the powerful songwriting panache of Ashly Holland, Livingston band Little Jane and the Pistol Whips expertly braids the style of early country into their own unique blend of Montana made Americana.

TV-G > **See photo, p. 12**

10:00 **WORLD** Tyrus Wong: American Masters TV-PG

10:48 **Austin City Limits** "Florence + The Machine/Andra Day" Enjoy dazzling modern rock and soul with Florence + The Machine and San Diego's Andra Day. TV-PG

11:30 **WORLD** Oregon's Animation Magic TV-G

SUNDAY

MAY 13

AM EARLY MORNING

mdnt NOVA Wonders: Are We Alone?

MDNT **WORLD** America Reframed: Finding Kukan

1:00 **Nature: Natural Born Rebels: The Mating Game**

1:00 **WORLD** POV: Ai Weiwei: The Fake Case

2:00 **Last Tango In Halifax**

2:00 **WORLD** Pacific Heartbeat: Making Good Men

3:00 Eisenhower's Secret War: Building Weapons, Talking Peace

3:00 **WORLD** POV: My Love, Don't Cross That River

4:00 **World on the Brink: Globalization and Its Discontents**

4:00 **WORLD** On Story: A Conversation with Dan Gilroy

4:30 **WORLD** To the Contrary with Bonnie Erbe

5:00 **Americas Now: Wildlife Traffickers**

5:00 **WORLD** Washington Week

5:30 **Curious George**

5:30 **WORLD** Open Mind

6:00 **SEE WEEKEND SCHEDULE, P. 23**

PM AFTERNOON/EVENING

3:00 **Requiem for My Mother** Composer Stephen Edwards pays tribute to his mother and musical muse with an orchestral composition. TV-G

3:00 **WORLD** America Reframed: Finding Kukan

4:00 Sara's Weeknight Meals

"Mom's Day Off" A Cheese Sandwich Souffle and Mini Meatloaves, cooked individually in muffin tins, are featured. TV-G

4:00 **WORLD** Colliding Dreams TV-14

4:30 **Downton Abbey Season 2 On Masterpiece** "Episode 3" Isobel and Cora lock horns over control of Downton's medical role. Mrs. Bird starts a soup kitchen. TV-PG

5:30 PBS NewsHour Weekend

6:00 **M·M** **Montana AG Live** "Another Cropping System Angle" Incorporating warm season crops into Montana's traditional cool season systems. TV-G > **See p. 5**

6:00 **WORLD** **Nature: Natural Born Rebels: The Mating Game** TV-PG-s

7:00 Little Women On Masterpiece

"Pt 1" With their father away at war, sisters Meg, Jo, Beth and Amy March come to terms with their new life. TV-PG > **See story, p. 13**

7:00 **WORLD** Requiem for My Mother TV-G

7:57 **WORLD** **Doc World: The Biggest Chinese Restaurant in the World/Japan**

8:05 Unforgotten Season 2 On Masterpiece

"Episode 3" Tessa, Sara, Colin and Marion each have a motive-but also an alibi. Cassie has a revelation. TV-14

9:30 **WORLD** **Local USA: Ku Kanaka: Stand Tall**

9:35 **Tale of Two Sisters** "Jackie Kennedy Onassis" The lives of Jackie Kennedy Onassis and Lee Radziwell were intertwined through rivalry and loss. TV-PG

10:00 **WORLD** **Nature: Natural Born Rebels: The Mating Game** TV-PG-s

10:30 Capital

11:00 **WORLD** Requiem for My Mother TV-G

11:30 **Project Asteroid: Mapping Bennu** The construction of a critical instrument on board NASA'S Osiris-REx spacecraft is highlighted. TV-G

11:57 **WORLD** **Doc World: The Biggest Chinese Restaurant in the World/Japan**

MONDAY

MAY 14

AM EARLY MORNING

mdnt **Doc Martin: Sickness and Health**

1:00 **Austin City Limits: Florence + The Machine/Andra Day**

1:30 **WORLD** **Local USA: Ku Kanaka: Stand Tall**

2:00 **M·M** **11th & Grant with Eric Funk: Little Jane & The Pistol Whips**

2:00 **WORLD** **Story of China: Golden Age/The Ming**

3:00 **Live from Lincoln Center: Andrew Rannells In Concert**

4:00 **Great Performances: Chita Rivera: A Lot of Livin' to Do**

4:00 **WORLD** **Overheard with Evan Smith**

4:30 **WORLD** **Open Mind**

M·M 11th & Grant with Eric Funk: Little Jane & Pistol Whips

> **Airs 7pm Thursday, May 10**

Also 5/12 9:50pm; 5/14 2am

Led by the powerful songwriting of Ashly Holland, *Little Jane and the Pistol Whips* stylizes their sound from both early county and contemporary Americana. With 'Q' King roping in some melodic and tight electric guitar licks and fellow rhythm rustlers—Paul and Russ on drums and bass respectively, they earned a strong following of dancers and music fans alike. Initially, the listener may be drawn to a familiar old tune, maybe something from Ernst Tubbs or Loretta Lynn. Lean in a little closer and you may hear a bit of Willie, Patsy Cline or even later country music luminaries such as Dwight Yoakam and Gillian Welch. Pictured: Ashly Holland



SCOTT STERLING

- 5:00 Infinity Hall Live: Great Performances Vol. 1
- 5:00 WORLD Newsroom Tokyo
- 5:45 WORLD Direct Talk
- 6:00 SEE DAYTIME SCHEDULE, P. 22

PM EVENING

- 5:30 Nightly Business Report**
5:30 WORLD Roadtrip Nation: You Can Guide Your Future TV-PG
- 6:00 PBS NewsHour**
6:00 WORLD Pacific Heartbeat: Being Bruno Banani TV-G
- 7:00 Antiques Roadshow** "Newport, hr 1" A Rohmer doll is valued on the patio and Tiffany vases stun an appraiser in the lavish ballroom. TV-G
7:30 WORLD Stories from the Stage: Make It or Break It TV-PG
- 8:00 M·M Backroads of Montana**
"Speed of Sound" Backroads of Montana: Speed of Sound visits Baker, Vida, Arlee, Conrad and Glendive. TV-G > See story, p. 5
8:00 WORLD PBS NewsHour
- 8:30 M·M Backroads of Montana**
"Rich with Tradition" Virginia City legends; big treats in Ravalli; Corn Maze in Bozeman, Stonehenge Air Museum. TV-G > See p. 5
- 9:00 PL Royal Wedding Watch** "A Wedding Is Announced" This program introduces the bride and groom, venue, royal protocols and rules, engagement, Meghan's learning curve, overview and preview. > See photo, p. 14
9:00 WORLD Nightly Business Report
9:30 WORLD To the Contrary with Bonnie Erbe
- 10:00 BBC World News**
10:00 WORLD Roadtrip Nation: Know Where Home Is TV-PG
- 10:30 Amanpour On PBS**
10:30 WORLD Roadtrip Nation: You Can Guide Your Future TV-PG
- 11:00 Beyond 100 Days**
11:00 WORLD Pacific Heartbeat: Being Bruno Banani TV-G
- 11:30 Moveable Feast with Fine Cooking** "Fresno, California" Grilled lamb shoulder with apricots, eggplant caviar and fennel and curried carrots are served. TV-G

TUESDAY MAY 15

AM EARLY MORNING

- mdnt Truth About Money with Ric Edelman
- 12:30 NHK Newslines
- 12:30 WORLD Stories from the Stage: Make It or Break It
- 1:00 Unforgotten Season 2 On Masterpiece: Episode 3
- 1:00 WORLD PBS NewsHour

- 2:00 WORLD Nightly Business Report
- 2:28 Articulate with Jim Cotter: The Very Fortunate Daniel Handler
- 2:30 WORLD Amanpour On PBS
- 2:55 Little Women On Masterpiece, pt 1
- 3:00 WORLD POV: My Love, Don't Cross That River
- 4:00 Unforgotten Season 2 On Masterpiece: Episode 3
- 4:00 WORLD Consuelo Mack WealthTrack
- 4:30 WORLD Asia Insight
- 5:00 WORLD Newsroom Tokyo
- 5:30 Travel Detective with Peter Greenberg: Crossing Border for Cheaper Airfare
- 5:45 WORLD Direct Talk
- 6:00 SEE DAYTIME SCHEDULE, P. 22

PM EVENING

- 5:30 Nightly Business Report**
- 6:00 PBS NewsHour**
6:00 WORLD America Reframed: Random Acts of Legacy
- 7:00 Civilizations** "Renaissances" The connections and rivalries between Renaissance Italy and the Islamic empires are explored. TV-PG
7:30 WORLD Mr. Tanimoto's Journey TV-G
- 8:00 First Civilizations** "Trade" An ancient civilization unlike any other, that of the Indus Valley, is highlighted. TV-PG > See story, p. 7
8:00 WORLD PBS NewsHour
- 9:00 PL Royal Wedding Watch** "What to Wear" Learn about wedding attire for him & her, jewelry, bridesmaids, page boys, mother of the bride, guests, flowers. > See photo, p. 14
9:00 WORLD Nightly Business Report
9:30 WORLD Global 3000 TV-G
- 10:00 BBC World News**
10:00 WORLD America Reframed: Random Acts of Legacy
- 10:30 Amanpour On PBS**
- 11:00 Beyond 100 Days**
- 11:30 Live at the Charleston Music Hall** "Stop Light Observations" SLO, formed by songwriter and pianist John-Keith Culbreath and guitarist Louis Duffie, perform. TV-G
11:30 WORLD Mr. Tanimoto's Journey TV-G

WEDNESDAY MAY 16

AM EARLY MORNING

- mdnt Truth About Money with Ric Edelman
- MDNT WORLD Nothing Left to Lose
- 12:30 NHK Newslines
- 1:00 Jesus: Countdown to Calvary
- 1:00 WORLD PBS NewsHour
- 2:00 Royal Wedding Watch (W.T.): A Wedding Is Announced
- 2:00 WORLD Nightly Business Report
- 2:30 WORLD Amanpour On PBS
- 3:00 Antiques Roadshow: Newport, hr 1



COURTESY OF MASTERPIECE ON PBS, BBC AND PLAYGROUND

Willa Fitzgerald as Meg, Kathryn Newton as Amy, Annes Elwy as Beth; Bottom row: Maya Hawke as Jo

MASTERPIECE Little Women

As engaging today as in 1868, Louisa May Alcott's story follows sisters Jo (Maya Hawke), Meg (Willa Fitzgerald), Beth (Annes Elwy) and Amy (Kathryn Newton) who, together with Laurie (Jonah Hauer-King), journey to adulthood. The cast also includes Emily Watson, Angela Lansbury, Dylan Baker and Michael Gambon.

► Part One

7pm Sunday, May 13 Also 5/15 2:55am

With their father away at war, sisters Meg, Jo, Beth and Amy March come to terms with their new life, alongside their mother, Marmee. The girls make friends with Laurie, the new boy next door.

► Part Two

7pm Sunday, May 20 Also 5/22 2:58am

The March family fears the worst when Mr. March falls ill. As circumstances change for Meg, Jo, Beth and Amy, the family must come together to face their most difficult challenge yet.



COURTESY OF MASTERPIECE ON PBS, BBC AND PLAYGROUND

L to R: Maya Hawke as Jo, Kathryn Newton as Amy, Emily Watson as Marmee, Julian Morris as John Brooke and Willa Fitzgerald as Meg

Evening & Overnight

M-M Made in Montana, see pp. 4-5 PL Pledge programming

- 3:00 **WORLD** Secrets of the Dead: Vampire Legend
- 4:00 **Antiques Roadshow: Tucson**, hr 1
- 4:00 **WORLD** To the Contrary with Bonnie Erbe
- 4:30 **WORLD** Between the Lines with Barry Kibrick: Jimmy Steinfeldt: Rock 'n' Roll Lens
- 5:00 **Angle of Attack**, pt 1
- 5:00 **WORLD** Newsroom Tokyo
- 5:45 **WORLD** Direct Talk
- 6:00 **SEE DAYTIME SCHEDULE, P. 22**

PM EVENING

- 5:30 Nightly Business Report**
- 6:00 PBS NewsHour**
- 6:00 **WORLD** Relocation, Arkansas: Aftermath of Incarceration tv-g
- 7:00 Nature** "Super Hummingbirds" High speed camerawork and breakthrough new science showcase the fast-paced world of hummingbirds. tv-pg
- 7:00 **WORLD** Frontline
- 8:00 NOVA Wonders** "Can We Build A Brain?" Advances in artificial intelligence are explored. Are we handing over too much power to machines? tv-pg > **See story, inside front cover**
- 8:00 **WORLD** PBS NewsHour

- 9:00 PL Royal Wedding Watch** "Ceremony" This episode features transport, chapel seating plan, best man, music and words, wedding ring, royal protocols, bells, and kiss as two families come together. > **See photo, p. 14**

- 9:00 **WORLD** Nightly Business Report
- 9:30 **WORLD** Focus On Europe

10:00 BBC World News

- 10:00 **WORLD** Passing Poston: An American Story tv-g

10:30 Amanpour On PBS**11:00 Beyond 100 Days**

- 11:00 **WORLD** Relocation, Arkansas: Aftermath of Incarceration tv-g

11:30 MotorWeek tv-g

THURSDAY MAY 17

AM EARLY MORNING

- mdnt Truth About Money with Ric Edelman
- MDNT **WORLD** Frontline
- 12:30 **NHK Newsline**
- 1:00 **Civilizations: Renaissances**
- 1:00 **WORLD** PBS NewsHour
- 2:00 **First Civilizations: Trade**

- 2:00 **WORLD** Nightly Business Report
- 2:30 **WORLD** Amanpour On PBS
- 3:00 **Royal Wedding Watch (W.T.): What to Wear**
- 3:00 **WORLD** Requiem for My Mother
- 4:00 **Civilizations: Renaissances**
- 4:00 **WORLD** Scully/The World Show
- 4:30 **WORLD** Second Opinion: Sudden Cardiac Arrest in Young Athletes
- 5:00 **First Civilizations: Trade**
- 5:00 **WORLD** Newsroom Tokyo
- 5:45 **WORLD** Direct Talk
- 6:00 **SEE DAYTIME SCHEDULE, P. 22**

PM EVENING

- 5:30 Nightly Business Report**
- 6:00 PBS NewsHour**
- 6:00 **WORLD** NOVA Wonders: Can We Build a Brain? tv-pg
- 7:00 M-M Backroads of Montana** "Speed of Sound" Backroads of Montana: Speed of Sound visits Baker, Vida, Arlee, Conrad and Glendive. tv-g > **See story, p. 5**
- 7:00 **WORLD** Secrets of the Dead: Jamestown's Dark Winter tv-14
- 7:30 M-M Montana Jails Slammed for Solutions** Does alternative addiction treatment alleviate jail overcrowding and reduce re-offending? tv-pg-L > **See photo, p. 4**
- 8:00 Doc Martin** "Guess Who's Coming to Dinner?" Martin and Louisa host a disastrous dinner party and Morwenna advertises for a lodger. tv-pg
- 8:00 **WORLD** PBS NewsHour
- 9:00 PL Royal Wedding Watch** "How to Celebrate" This episode features the procession, public reaction, the Royals on display, photography, wedding breakfast, banquet etiquette, cake, and party. > **See photo, p. 14**
- 9:00 **WORLD** Nightly Business Report
- 9:30 **WORLD** Scully/The World Show tv-g
- 10:00 BBC World News**
- 10:00 **WORLD** My Love Affair with the Brain: The Life & Science of Dr. Marian Diamond tv-g
- 10:30 Amanpour On PBS**
- 11:00 Beyond 100 Days**
- 11:00 **WORLD** NOVA Wonders: Can We Build a Brain? tv-pg
- 11:30 Closer to Truth** "Does Consciousness Defeat Materialism?" Does anything exist beyond the physical world? If yes, could consciousness undermine materialism? tv-g

FRIDAY

MAY 18

AM EARLY MORNING

- mdnt Truth About Money with Ric Edelman
- MDNT **WORLD** Secrets of the Dead: Jamestown's Dark Winter
- 12:30 **NHK Newsline**
- 1:00 **NOVA Wonders: Can We Build a Brain?**



COURTESY OF ANWAR HUSSEIN/GETTY IMAGES

Royal Wedding Watch

- > **A Wedding is Announced** *Airs 9pm Monday, May 14* Also 5/16 2am
- > **What to Wear** *Airs 9pm Tuesday, May 15* Also 5/17 3am
- > **Ceremony** *Airs 9pm Wednesday, May 16* Also 5/18 2am
- > **How to Celebrate** *Airs 9pm Thursday, May 17* Also 5/20 3am
- > **Happily Ever After** *Airs 9:30pm Friday, May 18* Also 5/21 2am

Each weeknight leading up to Prince Henry and Meghan Markle's wedding, PBS presents a series of programs highlighting preparations in London that week, with highlights on royal wedding etiquette and protocol. Pictured: Prince Harry and Meghan Markle, wearing a white belted coat by Canadian brand Line The Label, attend a photocall in the Sunken Gardens at Kensington Palace following the announcement of their engagement on November 27, 2017 in London, England.

- 1:00 **WORLD** PBS NewsHour
 2:00 **Royal Wedding Watch (W.T.): Ceremony**
 2:00 **WORLD** Nightly Business Report
 2:30 **WORLD** Amanpour On PBS
 3:00 **Nature: Super Hummingbirds**
 3:00 **WORLD** Oregon's Animation Magic
 3:30 **WORLD** Stories from the Stage:
 Make It or Break It
 4:00 **NOVA** Wonders: Can We Build a Brain?
 4:00 **WORLD** Well Read:
 Margo Livesey, Mercury
 4:30 **WORLD** Closer to Truth:
 Is the Multiverse Real?
 5:00 **The Genius of George Boole**
 5:00 **WORLD** Newsroom Tokyo
 5:45 **WORLD** Direct Talk
 6:00 **SEE DAYTIME SCHEDULE, P. 22**

PM EVENING

- 5:30 Nightly Business Report**
6:00 PBS NewsHour
7:00 Washington Week
 7:00 **WORLD** Civilizations: Renaissances TV-PG
7:30 In Principle
8:00 Hedy Lamarr: American Masters Discover the story of the most beautiful woman in the world, who was also an ingenious inventor. TV-PG ▶ **See story, right**
 8:00 **WORLD** PBS NewsHour
 9:00 **WORLD** Nightly Business Report
9:30 PL Royal Wedding Watch "Happily Ever After" Watch the welcome, crests and titles, marrying in, the Royal Marriages Act, gifts, honeymoons, royal life. ▶ **See photo, p. 14**
 9:30 **WORLD** Asia Insight
 10:00 **WORLD** Story of China: The Last Empire/ The Age of Revolution TV-PG
10:30 BBC World News
11:00 Amanpour On PBS
11:30 Art Wolfe's Travels to the Edge "West Africa: Togo and Benin" Villages known for their vibrant inhabitants, intense Voodoo rituals and masked dances are visited. TV-G

SATURDAY

MAY 19

AM EARLY MORNING

- mdnt Truth About Money with Ric Edelman
 MDNT **WORLD** Civilizations: Renaissances
 12:30 Overheard with Evan Smith:
 Ana Marie Cox, Political Columnist
 Age Wise: End of Life
 1:00 **WORLD** PBS NewsHour
 1:30 To the Contrary with Bonnie Erbe
 2:00 Open Mind: Automating Inequality
 2:00 **WORLD** Nightly Business Report
 2:30 This Is America & The World
 2:30 **WORLD** Amanpour On PBS
 3:00 Washington Week
 3:00 **WORLD** Roadtrip Nation:
 Know Where Home Is
 3:30 Market to Market

- 3:30 **WORLD** Roadtrip Nation:
 You Can Guide Your Future
 4:00 **The This Old House Hour**
 4:00 **WORLD** Second Opinion: Sudden Cardiac
 Arrest in Young Athletes
 4:30 **WORLD** Consuelo Mack WealthTrack
 5:00 **When Learning Comes Naturally**
 5:00 **WORLD** To the Contrary with Bonnie Erbe
 5:30 Super Why!
 5:30 **WORLD** Washington Week
 6:00 **SEE WEEKEND SCHEDULE, P. 23**

PM EVENING

- 6:00 The Lawrence Welk Show**
 "Childhood Memories (1972)" "Those Were the Days," "Little Red Wagon," "Watchin' Scotty Grow" and "Small Fry" are performed. TV-G
 6:00 **WORLD** Hedy Lamarr:
 American Masters TV-PG
7:00 Last of the Summer Wine "The Mysterious C.W. Northrup" TV-PG
 7:30 **WORLD** Untold Stories: Mina Miller Edison,
 The Wizard's Wife TV-G
7:31 Still Open All Hours Granville is having a cut-price sale but only on old stock, not the boiled ham or new inflatable underwear support system that are getting a special Arkwright promotion. TV-PG
 8:00 **WORLD** America Reframed:
 Random Acts of Legacy
8:02 MontanaPBS Film Classics
 "An Officer and a Gentleman" A hardened loner shapes up for a military drill instructor and a factory girl from town. TV-PG
 9:30 **WORLD** Mr. Tanimoto's Journey TV-G
9:55 Austin City Limits "Zac Brown Band" The Southern country rock act performs their hits and songs from its latest record Welcome Home. TV-PG
 10:00 **WORLD** Hedy Lamarr:
 American Masters TV-PG
10:55 The Kate "Kiefer Sutherland" Film and TV star Kiefer Sutherland performs guitar-driven outlaw country/ Americana inspired songs. TV-PG
 11:30 **WORLD** Untold Stories: Mina Miller Edison,
 The Wizard's Wife: TV-G

SUNDAY

MAY 20

AM EARLY MORNING

- mdnt NOVA Wonders: Can We Build A Brain?
 MDNT **WORLD** America Reframed:
 Random Acts of Legacy
 1:00 **Nature: Super Hummingbirds**
 1:30 **WORLD** Mr. Tanimoto's Journey
 2:00 Last Tango in Halifax
 2:00 **WORLD** Pacific Heartbeat:
 Being Bruno Banani
 3:00 **Royal Wedding Watch (W.T.):**
 How to Celebrate



Hedy Lamarr

AMERICAN MASTERS

Bombshell: The Hedy Lamarr Story

▶ **Airs 8pm Friday, May 18**
 Also 5/21 3am

Hollywood star Hedy Lamarr (Ziegfeld Girl, Samson and Delilah) was known as the world's most beautiful woman – Snow White and Cat Woman were both based on her iconic look. However, her arresting appearance and glamorous life stood in the way of her being given the credit she deserved as an ingenious inventor whose pioneering work helped revolutionize modern communication. An Austrian Jewish emigrant who invented a covert communication system to try to help defeat the Nazis, Lamarr was ignored and told to sell kisses for war bonds instead. It was only toward the very end of her life that tech pioneers discovered that it was her concept that is now used as the basis for secure WiFi, GPS and Bluetooth technologies.

Evening & Overnight

M-M Made in Montana, see pp. 4-5

PL Pledge programming

- 3:30 **WORLD** Stories from the Stage: Kitchen Confessions
- 4:00 **World on the Brink: The Middle East**
- 4:00 **WORLD** On Story: A Conversation with Gale Anne Hurd
- 4:30 **WORLD** To the Contrary with Bonnie Erbe
- 5:00 **Americas Now: Green Awards**
- 5:00 **WORLD** Washington Week
- 5:30 **Curious George**
- 5:30 **WORLD** Open Mind
- 6:00 **SEE WEEKEND SCHEDULE, P. 23**

PM AFTERNOON/EVENING

- 3:00 Symphony of the Soil** An artistic exploration of the miraculous substance soil draws from science and ancient knowledge. TV-G
- 3:00 **WORLD** America Reframed: Random Acts of Legacy
- 4:00 American Barn Stories and Other Tales from the Heartlands** Enjoy this look at the people, places and old barns of America's Midwestern Heartland. TV-G
- 4:30 Downton Abbey Season 2 On Masterpiece** "Episode Four" In the climactic battle of the war, Matthew and William go over the top to an uncertain fate. TV-PG
- 4:30 **WORLD** Mr. Tanimoto's Journey TV-G
- 5:00 **WORLD** Quietest Place On Earth TV-G

5:30 PBS NewsHour Weekend

- 6:00 M-M Montana AG Live** "NAFTA: How Does It Affect Montana's Ag Community?" How does NAFTA affect Montana's agricultural community? TV-G > **See p. 5**

6:00 **WORLD** Nature: Super Hummingbirds TV-PG

7:00 Little Women On Masterpiece

"Pt 2" Circumstances change for Meg, Jo, Beth and Amy as the family faces their most difficult challenge. TV-PG > **See story, p. 13**

7:00 **WORLD** India: Nature's Wonderland TV-PG

8:00 **WORLD** Doc World: Tashi's Turbine TV-PG

9:00 **WORLD** War for Guam TV-G

9:05 Louisa May Alcott: American Masters

A look at the author of *Little Women* reveals she was a free thinker with a literary double life. TV-PG

10:00 **WORLD** Nature: Super Hummingbirds TV-PG

10:33 Capital TV-PG

11:00 **WORLD** India: Nature's Wonderland TV-PG

11:33 New Metropolis

"A Crack in the Pavement" The stories of two Ohio officials showcase the national infrastructure and regional land-use debate. TV-G

MONDAY

MAY 21

AM EARLY MORNING

- MDNT **WORLD** Doc World: Tashi's Turbine
- 12:05 **Doc Martin: Guess Who's Coming to Dinner?**
- 1:00 **Austin City Limits: Zac Brown Band**
- 1:00 **WORLD** War for Guam
- 2:00 **Royal Wedding Watch (W.T.): Marrying**
- 2:00 **WORLD** Story of China: The Last Empire/The Age of Revolution
- 3:00 **Hedy Lamarr: American Masters**
- 4:00 **WORLD** Overheard with Evan Smith
- 4:30 **Hollywood Idols: William Holden: The Golden Boy**
- 4:30 **WORLD** Open Mind
- 5:00 **Infinity Hall Live: Ani Difranco**
- 5:00 **WORLD** Newsroom Tokyo
- 5:45 **WORLD** Direct Talk
- 6:00 **SEE DAYTIME SCHEDULE, P. 22**

PM EVENING

5:30 Nightly Business Report

6:00 PBS NewsHour

6:00 **WORLD** Pacific Heartbeat: Ever the Land TV-G

7:00 Antiques Roadshow

"Newport, hr 2" Fabulous finds include a faberge jade snuff bottle from 1890 and a Basquiat oil stick drawing. TV-G

7:00 **WORLD** Forever Chinatown: A Local USA/ Truly CA Special

7:30 **WORLD** Stories from the Stage: School Days: Teacher Tales TV-PG

8:00 Antiques Roadshow

"Tucson, hr 2" Discover wonderful hidden treasures in Tucson, such as a Jackie Robinson archive from around 1938. TV-G

8:00 **WORLD** PBS NewsHour

9:00 Independent Lens

"ACORN and the Firestorm" The politically charged battle to take down the community-organizing group ACORN is explored. TV-PG

9:00 **WORLD** Nightly Business Report

9:30 **WORLD** To the Contrary with Bonnie Erbe

10:00 **WORLD** Changing Season: On the Masumoto Family Farm TV-PG-L

10:30 BBC World News

11:00 Amanpour On PBS

11:00 **WORLD** Pacific Heartbeat: Ever the Land TV-G

11:30 Beyond 100 Days

TUESDAY

MAY 22

AM EARLY MORNING

- mdnt **Truth About Money** with Ric Edelman
- MDNT **WORLD** Forever Chinatown: A Local USA/ Truly CA Special
- 12:30 **NHK Newsline**
- 12:30 **WORLD** Stories from the Stage: School Days: Teacher Tales
- 1:00 **Louisa May Alcott: American Masters**
- 1:00 **WORLD** PBS NewsHour

WETA



Masterpiece Mystery! Grantchester Season 3

Airs in six parts 9pm Thursdays beginning May 24 through June 28

Join James Norton and Robson Green as the improbable crime-fighting team—Reverend Sidney Chambers and Inspector Geordie Keating, respectively—bringing justice and spiritual nourishment to early 1950s England.

2:00 **WORLD** Nightly Business Report
2:30 **Articulate with Jim Cotter:**
Janet Echelman Looms Large
2:30 **WORLD** Amanpour On PBS
2:58 **Little Women On Masterpiece**
3:00 **WORLD** Secrets of the Dead:
Jamestown's Dark Winter
4:00 **WORLD** Consuelo Mack WealthTrack
4:30 **WORLD** Asia Insight
5:00 **Hollywood Idols: Fred Macmurray:**
The Guy Next Door
5:00 **WORLD** Newsroom Tokyo
5:30 **Travel Detective with Peter Greenberg:**
Overtourism
5:45 **WORLD** Direct Talk
6:00 **SEE DAYTIME SCHEDULE, P. 22**

PM EVENING

5:30 Nightly Business Report

6:00 PBS NewsHour

6:00 **WORLD** America Reframed:
Who Is Arthur Chu?

7:00 The Great American Read

Examine the power, passion and joy of reading through the lens of America's 100 best-loved books. TV-PG
► *See story, back cover*

7:30 **WORLD** Orchard House:
Home of Little Women TV-G

8:00 **WORLD** PBS NewsHour

9:00 Frontline

9:00 **WORLD** Nightly Business Report
9:30 **WORLD** Global 3000 TV-G

10:00 BBC World News

10:00 **WORLD** America Reframed:
Who Is Arthur Chu?

10:30 Amanpour On PBS

11:00 Beyond 100 Days

11:30 Live at the Charleston Music Hall "Sister Hazel" The alternative rock band Sister Hazel showcase their highly melodic tunes and prominent harmonies. TV-G

11:30 **WORLD** Orchard House:
Home of Little Women TV-G

WEDNESDAY MAY 23

AM EARLY MORNING

mdnt **Truth About Money with Ric Edelman**

MDNT **WORLD** Lost Child: Sayon's Journey

12:30 **NHK Newsline**

1:00 **Independent Lens:**
Acorn and the Firestorm

1:00 **WORLD** PBS NewsHour

2:00 **WORLD** Nightly Business Report

2:30 **Unconquered Seminoles**

2:30 **WORLD** Amanpour On PBS

3:00 **Antiques Roadshow: Newport, hr 2**

3:00 **WORLD** India: Nature's Wonderland

4:00 **Antiques Roadshow: Tucson, hr 2**

4:00 **WORLD** To the Contrary with Bonnie Erbe

4:30 **WORLD** Between the Lines with Barry Kibrick: Joel Bailey: The Vorpil Sword

5:00 **Angle of Attack, pt 2**

5:00 **WORLD** Newsroom Tokyo
5:45 **WORLD** Direct Talk
6:00 **SEE DAYTIME SCHEDULE, P. 22**

PM EVENING

5:30 Nightly Business Report

5:30 **WORLD** Independent Lens:
Acorn and the Firestorm TV-PG

6:00 PBS NewsHour

7:00 Nature "The World's Most Wanted Animal" Conservationist Maria Diekmann attempts to save pangolins, the most trafficked animal in the world. TV-PG

7:00 **WORLD** Frontline

8:00 NOVA Wonders "Can We Make Life?" Discover the breakthroughs in genetic engineering enabling scientists to create and manipulate DNA. TV-PG ► *See story, inside front cover*

8:00 **WORLD** PBS NewsHour

9:00 NOVA "Extreme Animal Weapons" Discover the secrets that underlie nature's battleground as claws, horns and fangs are explored. TV-PG

9:00 **WORLD** Nightly Business Report

9:30 **WORLD** Focus On Europe

10:00 BBC World News

10:00 **WORLD** Independent Lens:
Acorn and the Firestorm TV-PG

10:30 Amanpour On PBS

11:00 Beyond 100 Days

11:30 MotorWeek TV-G

11:30 **WORLD** Mr. Tanimoto's Journey TV-G

THURSDAY MAY 24

AM EARLY MORNING

mdnt **Truth About Money with Ric Edelman**

MDNT **WORLD** Frontline

12:30 **NHK Newsline**

1:00 **The Great American Read**

1:00 **WORLD** PBS NewsHour

2:00 **WORLD** Nightly Business Report

2:30 **WORLD** Amanpour On PBS

3:00 **Frontline**

3:00 **WORLD** Quietest Place On Earth

4:00 **The Great American Read**

4:00 **WORLD** Scully/The World Show

4:30 **WORLD** Second Opinion: Type II Diabetes/Value-Based Care

5:00 **WORLD** Newsroom Tokyo

5:45 **WORLD** Direct Talk

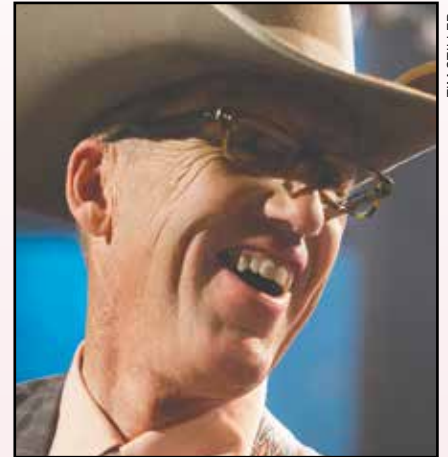
6:00 **SEE DAYTIME SCHEDULE, P. 22**

PM EVENING

5:30 Nightly Business Report

6:00 PBS NewsHour

6:00 **WORLD** NOVA Wonders:
Can We Make Life? TV-PG



Wylie Gustafson

M•M

11th & Grant

11TH & GRANT WITH ERIC FUNK

Wylie and the Wild West

► **Airs 7pm Thursday, May 24**

Also 5/26 9:50pm

Horseman, singer, songwriter, and world famous Yahoo!® yodeler Wylie Gustafson brings his Big Sky spirit straight from the empty sprawl of northern Montana to the stage of *11th & Grant with Eric Funk*. Wylie & The Wild West showcase their unique rural perspective and the essence of the 4th generation Montana rancher. Wylie is a real life cowboy on northern Montana's Hi-Line where he makes his home and finds inspiration for his art. With over twenty albums to his credit, he's been delighting audiences around the world with his original music, which includes elements of cowboy, traditional country, western swing, folk and yodeling.

Since 1989, Wylie & the Wild West has become internationally known for their captivating presentation of original and traditional music of America and its colorful West. The group got its start on Ronnie Mack's Barn Dance at the Palomino Club in North Hollywood, California, developing their sound alongside artists such as Dale Watson, Lucinda Williams, Dwight Yoakum, Rosie Flores and Dave Alvin.

Wylie & The Wild West features lead singer & guitarist Wylie Gustafson, Clayton Parsons on guitar, Greg Campbell on bass, and Tim Lashley on drums. Despite his successful career as one of America's most recognized and unique entertainers, Wylie still gets up everyday and tends to the livestock on his quarter horse ranch near Conrad, Montana. It grounds him and is the backbone of his art.

Evening & Overnight

M-M Made in Montana, see pp. 4-5 **PL** Pledge programming

7:00 **M-M 11th & Grant with Eric Funk** "Wylie & The Wild West" Horseman, singer, songwriter, and world famous Yahoo! yodeler Wylie Gustafson brings his Big Sky spirit straight from the empty sprawl of northern Montana to the stage of *11th & Grant with Eric Funk*. tv-g
► See story, p. 17

7:00 **WORLD** Secrets of the Dead: The Real Trojan Horse tv-PG-V

8:00 **Doc Martin** "The Tameness of a Wolf" Ruth is invited on Radio Portwenn and attracts an admirer. Doc and Louisa find a replacement nanny. tv-PG

8:00 **WORLD** PBS NewsHour

9:00 **Masterpiece Mystery!** "Grantchester, pt 1" Reverend Sidney Chambers suspects an apparent suicide is actually murder and must get police help. tv-14-V
► See photo, p. 16

9:00 **WORLD** Nightly Business Report

9:30 **WORLD** Scully/The World Show tv-G

10:00 **WORLD** NOVA: Extreme Animal Weapons tv-PG

10:15 **BBC World News**

10:45 **Amanpour On PBS**

11:00 **Beyond 100 Days**

11:00 **WORLD** NOVA Wonders: Can We Make Life? tv-PG

11:30 **Closer to Truth** "Fallacies In Arguing for God?" When believers argue that God exists, what mistakes do they make? tv-G

FRIDAY MAY 25

AM EARLY MORNING

12:11 Truth About Money with Ric Edelman

MDNT **WORLD** Secrets of the Dead: The Real Trojan Horse

12:39 **NHK** Newline

1:00 **NOVA** Wonders: Can We Make Life?

1:00 **WORLD** PBS NewsHour

2:00 **NOVA**: Extreme Animal Weapons

2:00 **WORLD** Nightly Business Report

2:30 **WORLD** Amanpour On PBS

3:00 **Nature**: The World's Most Wanted Animal

3:00 **WORLD** Forever Chinatown: A Local USA/Truly CA Special

3:30 **WORLD** Stories from the Stage: School Days: Teacher Tales

4:00 **NOVA** Wonders: Can We Make Life?

4:00 **WORLD** Well Read: Nonemna Donohue, The Wonderer

4:30 **WORLD** Closer to Truth: Critical Realism in Science and Religion?

5:00 **NOVA**: Extreme Animal Weapons

5:00 **WORLD** Newsroom Tokyo

5:45 **WORLD** Direct Talk

6:00 **SEE DAYTIME SCHEDULE, P. 22**

PM EVENING

5:30 **Nightly Business Report**

6:00 **PBS NewsHour**

6:00 **WORLD** The 2 Sides Project tv-G

7:00 **Washington Week**

7:00 **WORLD** Jeremiah tv-G

7:30 **In Principle**

8:00 **Great Performances** "The Opera House" The Met Opera's Lincoln Center home and the cultural life of 1950s-60s New York City are explored. tv-G **► See story, p. 19**

8:00 **WORLD** PBS NewsHour

9:00 **WORLD** Nightly Business Report

9:30 **WORLD** Asia Insight

10:00 **BBC World News**

10:00 **WORLD** They Were Our Fathers tv-G

10:30 **Amanpour On PBS**

11:00 **Scully/The World Show** tv-G

11:00 **WORLD** The 2 Sides Project tv-G

11:30 **Art Wolfe's Travels to the Edge**

"Wild Asia: Nepal and India" Encounter elephants, Bengal tigers, rare Asian rhinos, sloth bears and primeval Gharial crocodiles. tv-G

SATURDAY MAY 26

AM EARLY MORNING

mdnt Truth About Money with Ric Edelman

MDNT **WORLD** Jeremiah

12:30 Overheard with Evan Smith: Jake Tapper

1:00 Age Wise: Communities That Care

1:00 **WORLD** PBS NewsHour

1:30 To the Contrary with Bonnie Erbe

2:00 Open Mind: Law, Order and Justice

2:00 **WORLD** Nightly Business Report

2:30 This Is America & The World

2:30 **WORLD** Amanpour On PBS

3:00 Washington Week

3:00 **WORLD** Lost Child: Sayon's Journey

3:30 Market to Market

4:00 The This Old House Hour

4:00 **WORLD** Second Opinion: Type II

Diabetes/Value-Based Care

4:30 **WORLD** Consuelo Mack WealthTrack

5:00 Foundations of Yoga with Tara Lee

5:00 **WORLD** To the Contrary with Bonnie Erbe

5:30 Super Why!

5:30 **WORLD** Washington Week

6:00 **SEE WEEKEND SCHEDULE, P. 23**

PM EVENING

6:00 **The Lawrence Welk Show** "Salute to the Armed Forces (1968)" "How Ya Gonna Keep 'em Down On The Farm," "Alley Cat" and "Pack Up Your Troubles" are performed. tv-G

6:00 **WORLD** The Great American Read tv-PG

COURTESY OF ADAM STERNBERG



Independent Lens: Served Like a Girl

► Airls 9pm Monday, May 28 Also 5/30 2am, 4:30am

Join five remarkable women rebuilding their lives with humor and heart in the Ms. Veteran America Competition. Wounded in action and transitioning to civilian life, these women seek to help others struggling with homelessness, PTSD, and other trauma. Pictured left to right: Denyse Gordon, Joanne Makay, Hope Garcia, Rachel Engler, Jas Boothe, Nichole Alred and Andrea Waterbury.

7:00 Last of the Summer Wine

"A Double for Howard" TV-PG

7:31 Still Open All Hours Granville discovers a gap in the shop's security, and a cherry picker arrives in the street, which gives Madge terrible anxiety. Meanwhile, Eric and Kath decide to do something together, and Gastric enjoys the home cooking of a nearby neighbour, which ruins Granville's plans to get him together with Madge... will he find a solution? TV-PG

8:00 WORLD America Reframed: Who Is Arthur Chu?

8:02 MontanaPBS Film Classics

"Singin' in the Rain" A silent-film star loves a chorus girl who dubs his squeaky-voiced co-star in a Hollywood talkie. TV-PG > **See story, p. 21**

9:30 WORLD Orchard House: Home of Little Women TV-G

9:50 M-M 11th & Grant with Eric Funk

"Wylie & The Wild West" Horseman, singer, songwriter, and world famous Yahoo! yodeler Wylie Gustafson brings his Big Sky spirit straight from the empty sprawl of northern Montana to the stage of *11th & Grant with Eric Funk*. TV-G > **See story, p. 17**

10:00 WORLD The Great American Read TV-PG

10:50 Austin City Limits

"Sturgill Simpson/Asleep at the Wheel" Enjoy "Life of Sin" and other tunes from Simpson's acclaimed LP *Metamodern Sounds in Country Music*. TV-PG

SUNDAY

MAY 27

AM EARLY MORNING

mdnt NOVA Wonders: Can We Make Life?

MDNT WORLD America Reframed: Who Is Arthur Chu?

1:00 Nature: The World's Most Wanted Animal

1:30 WORLD Orchard House: Home of Little Women

2:00 Last Tango In Halifax

2:00 WORLD Pacific Heartbeat: Ever The Land

3:00 Nasser's Republic: The Making of Modern Egypt

3:00 WORLD Changing Season: On the Masumoto Family Farm

4:00 World on the Brink: What Tomorrow May Bring

4:00 WORLD On Story: Script to Screen: Pete's Dragon

4:30 WORLD To the Contrary with Bonnie Erbe

5:00 In the Americas with David Yetman

5:00 WORLD Washington Week

5:30 Curious George 3

5:30 WORLD Open Mind

6:00 SEE WEEKEND SCHEDULE, P. 23

PM AFTERNOON/EVENING

3:00 Searching for Augusta: The Forgotten Angel of Bastogne

Augusta Chiyw was a black nurse at a US military aid station during the Battle of The Bulge. TV-G

3:00 WORLD America Reframed: Who Is Arthur Chu?

4:00 Sands of War General George Patton created the Desert Training Center in the Mojave Desert during World War II. TV-PG

4:30 Downton Abbey Season 2 On Masterpiece "Episode 5" As the war nears its end, Downton's aristocrats and servants put their lives back together. TV-PG

4:30 WORLD Orchard House: Home of Little Women TV-G

5:00 WORLD City at War: Chicago TV-PG

5:30 PBS NewsHour Weekend

6:00 M-M Not Yet Begun to Fight

Retired Marine Colonel Eric Hasting takes five veterans who just returned from war fly-fishing. > **See story, p. 3**

6:00 WORLD Nature: The World's Most Wanted Animal TV-PG

7:00 National Memorial Day Concert

A wonderful night of remembrance honors the service of American men and women in uniform. TV-PG > **See story, p. 3**

7:00 WORLD India: Nature's Wonderland: TV-PG

8:30 M-M Backroads of Montana Special Presentation

"A Salute to Veterans" Stories of the Great Falls Veteran's Memorial, a senior citizen weightlifter and Korean War veteran, the Native American Soldier Monument in Crow Agency and veteran and bugler Ray Zell are featured on the special program. > **See story, p. 3**

9:00 National Memorial Day Concert

A wonderful night of remembrance honors the service of American men and women in uniform. TV-PG > **See story, p. 3**

9:00 WORLD Debt of Honor: Disabled Veterans in American History TV-PG-V

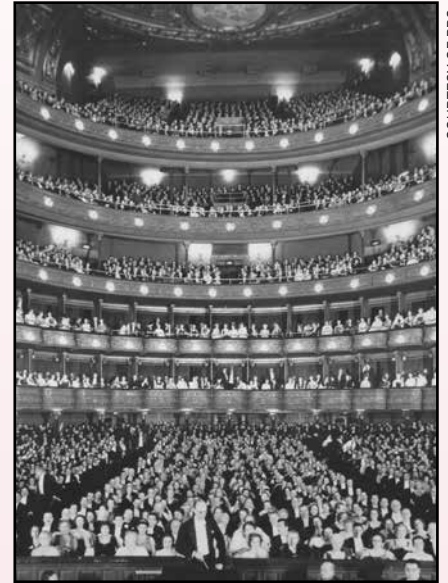
10:00 WORLD Nature: The World's Most Wanted Animal TV-PG

10:30 Soldier On: Life After Deployment

Three women confront the challenges of readjusting to civilian life after their military service. TV-PG

11:00 WORLD India: Nature's Wonderland TV-PG

11:30 New Metropolis "The New Neighbors" Pennsauken, New Jersey residents attempt to revitalize their town through "stable integration." TV-G



COURTESY OF PBS

The "Diamond Horseshoe," the interior of the auditorium at the old Met (1939-40).

GREAT PERFORMANCES

The Opera House

> **Airs 8pm Friday, May 25**

Also 5/28 3am

Explore the rich history of the Metropolitan Opera's Lincoln Center home and the cultural life of 1950s-60s New York City. Features famed soprano Leontyne Price, the Met's general manager Rudolf Bing, city planner Robert Moses and architect Wallace Harrison.



COURTESY OF LOUIS MELANÇON / METROPOLITAN OPERA ARCHIVES

Soprano Leontyne Price as Cleopatra (1966).

BETH SABOE



M-M **The Rundown with Beth Saboe: Enemy on Our Shores**

► **Airs 7pm Thursday, May 31** Also 6/3 10am

In 2016, one of the most devastating invasive species in the world was detected in a handful of Montana waterbodies for the first time. The evidence of non-native mussel larvae in Tiber and Canyon Ferry reservoirs prompted a statewide emergency response as stakeholders rushed to combat the aquatic enemy. Invasive zebra and quagga mussels, which are native to eastern Europe, have already wreaked havoc on the Great Lakes and spread throughout the majority of the U.S. Pictured: A plastic pipe encrusted in quagga mussels from Lake Mead, Nevada sits on display at the Flathead Lake Biological Station.

TUESDAY

MAY 29

AM EARLY MORNING

- mdnt Truth About Money with Ric Edelman
 MDNT WORLD Nobody Dies: A Film About a Musician Her Mom And Vietnam
 12:30 NHK Newsline
 12:30 WORLD Stories from the Stage
 1:00 National Memorial Day Concert
 1:00 WORLD PBS NewsHour
 2:00 WORLD Nightly Business Report
 2:30 Articulate with Jim Cotter: Ian Brennan and the Democratization of Music
 2:30 WORLD Amanpour On PBS
 3:00 M-M Not Yet Begun to Fight
 3:00 WORLD Jeremiah
 4:00 National Memorial Day Concert
 4:00 WORLD Consuelo Mack WealthTrack
 4:30 WORLD Asia Insight
 5:00 WORLD Newsroom Tokyo
 5:30 Travel Detective with Peter Greenberg: Hidden Gems of Memphis
 5:45 WORLD Direct Talk
 6:00 **SEE DAYTIME SCHEDULE, P. 22**

PM EVENING

- 5:30 Nightly Business Report**
6:00 PBS NewsHour
 6:00 WORLD America Reframed: Breathin': The Eddy Zheng Story TV-PG
7:00 The Chinese Exclusion Act: American Experience The impact of the 1882 law that made it illegal for Chinese workers to come to America is examined. TV-PG
 7:00 WORLD Chinese Couplets: TV-G
 8:00 WORLD PBS NewsHour
9:00 Frontline
 9:00 WORLD Nightly Business Report
 9:30 WORLD Global 3000 TV-G
10:00 BBC World News
 10:00 WORLD America Reframed: Breathin': The Eddy Zheng Story TV-PG
10:30 Amanpour On PBS
11:00 Beyond 100 Days
 11:00 WORLD Independent Lens: Served Like a Girl TV-14
11:30 Live at the Charleston Music Hall "Toad the Wet Sprocket" The depth of Toad the Wet Sprocket's early songs and how the band has come full circle are revealed. TV-G

WEDNESDAY

MAY 30

AM EARLY MORNING

- mdnt Truth About Money with Ric Edelman
 12:30 NHK Newsline
 12:30 WORLD The Last Ring Home
 1:00 Going to War
 1:00 WORLD PBS NewsHour
 2:00 Independent Lens: Served Like a Girl
 2:00 WORLD Nightly Business Report
 2:30 WORLD Amanpour On PBS

MONDAY

MAY 28

AM EARLY MORNING

- mdnt Doc Martin: The Tameness of a Wolf
 1:00 Austin City Limits: Sturgill Simpson/Asleep at the Wheel
 1:00 WORLD Debt of Honor: Disabled Veterans in American History
 2:00 M-M 11th & Grant with Eric Funk: Wylie & The Wild West
 2:00 WORLD They Were Our Fathers
 3:00 Great Performances: The Opera House
 3:00 WORLD The 2 Sides Project
 4:00 WORLD Overheard with Evan Smith
 4:30 WORLD Open Mind
 5:00 Infinity Hall Live: Covered
 5:00 WORLD Newsroom Tokyo
 5:45 WORLD Direct Talk
 6:00 **SEE DAYTIME SCHEDULE, P. 22**

PM EVENING

5:30 Nightly Business Report

6:00 PBS NewsHour

- 6:00 WORLD Pacific Heartbeat: Dream Big: Nanakuli at the Fringe TV-G

7:00 Antiques Roadshow "Newport, hr 3" A Tiffany & Co. sapphire and diamond ring and a Boston bureau table from 1770 are appraised. TV-G

7:00 WORLD Nobody Dies: A Film About a Musician Her Mom and Vietnam TV-G

7:30 WORLD Stories from the Stage

8:00 Going to War This documentary takes us inside the experience of battle and reveals the experiences of soldiers. TV-14

8:00 WORLD PBS NewsHour

9:00 Independent Lens "Served Like a Girl" Remarkable women rebuild their lives with humor and heart in the Ms. Veteran America Competition. TV-14 ► **See photo, p. 18**

9:00 WORLD Nightly Business Report

9:30 WORLD To the Contrary with Bonnie Erbe
 10:00 WORLD Polytrauma Rehab in the VA: Compassionate Care TV-PG

10:30 BBC World News

11:00 Amanpour On PBS

11:00 WORLD Pacific Heartbeat: Dream Big: Nanakuli at the Fringe TV-G

11:30 Beyond 100 Days

- 3:00 WORLD India: Nature's Wonderland
3:30 Going to War
4:00 WORLD To the Contrary with Bonnie Erbe
4:30 Independent Lens: Served Like a Girl
4:30 WORLD Between the Lines with Barry Kibrick: Jacob Zigelboim, MD: Paradise Lost, Paradise Reg
5:00 WORLD Newsroom Tokyo
5:45 WORLD Direct Talk
6:00 SEE DAYTIME SCHEDULE, P. 22

PM EVENING

- 5:30 Nightly Business Report**
6:00 PBS NewsHour
7:00 Nature "Giraffes: Africa's Gentle Giants" A man, his family and a band of helpers attempt to relocate a herd of wild giraffes in Africa. TV-PG
7:00 WORLD Frontline
8:00 NOVA Wonders "What's the Universe Made Of?" Peer into the deepest unknowns of the universe to explore mysteries of dark matter and dark energy. TV-PG > See story, inside front cover
8:00 WORLD PBS NewsHour
9:00 NOVA "Inside Einstein's Mind" Einstein's simple but powerful ideas that reshaped our understanding of gravity are examined. TV-PG
9:00 WORLD Nightly Business Report
9:30 WORLD Focus On Europe
10:00 BBC World News
10:00 WORLD The Chinese Exclusion Act: American Experience TV-PG
10:30 Amanpour On PBS
11:00 Beyond 100 Days
11:30 MotorWeek TV-G

THURSDAY

MAY 31

AM EARLY MORNING

- mdnt Truth About Money with Ric Edelman
MDNT WORLD Frontline
12:30 NHK Newline
1:00 The Chinese Exclusion Act: American Experience
1:00 WORLD PBS NewsHour
2:00 WORLD Nightly Business Report
2:30 WORLD Amanpour On PBS
3:00 Frontline
3:00 WORLD Secrets of the Dead: The Real Trojan Horse
4:00 The Chinese Exclusion Act: American Experience
4:00 WORLD Scully/The World Show
4:30 WORLD Second Opinion: Preventive Cancer Screening
5:00 WORLD Newsroom Tokyo
5:45 WORLD Direct Talk
6:00 SEE DAYTIME SCHEDULE, P. 22

PM EVENING

- 5:30 Nightly Business Report**
6:00 PBS NewsHour
6:00 WORLD NOVA Wonders: What's the Universe Made Of? TV-PG
7:00 M+M The Rundown with Beth Saboe "Enemy on Our Shores" Devastating invasive species currently found in a handful of Montana waterbodies. > See photo, p. 20
7:00 WORLD Secrets of the Dead: The Mona Lisa Mystery TV-PG
7:30 M+M Montana Mosaics: 20th Century People and Events "History of Montana's Native Americans" This episode details the Federal and State policies that sought to strip Native Americans of their culture and traditions, such as the mandatory boarding schools for Indian children and a policy of re-locating adult Native Americans to jobs in the cities. TV-G > See p. 4
8:00 Doc Martin "Nobody Likes Me" Martin is coerced into taking James to playgroup and Ruth is having problems with her new neighbor. TV-PG
8:00 WORLD PBS NewsHour
9:00 Masterpiece Mystery! "Grantchester, pt 2" Sidney's former flame throws an engagement party that leads to murder. Sidney must crack the case. TV-14 > See photo, p. 16
9:00 WORLD Nightly Business Report
9:30 WORLD Scully/The World Show TV-G
10:00 WORLD NOVA: Inside Einstein's Mind TV-PG
10:15 BBC World News
10:45 Amanpour On PBS
11:13 Beyond 100 Days
11:00 WORLD NOVA Wonders: What's the Universe Made Of? TV-PG
11:30 Closer to Truth "What Is Philosophy of Science?" Can science discover all truths? Or are there truths beyond science? What is science? TV-G

MONTANAPBS FILM CLASSICS



A silent-film star (Gene Kelly) loves a chorus girl (Debbie Reynolds) who dubs his squeaky-voiced co-star in a 1927 Hollywood talkie.

Singin' in the Rain

> **Airs 8pm Saturday, May 26**
Also 5/27 1pm

In 1927, Don Lockwood and Lina Lamont are the darlings of the silent silver screen. Offscreen, Don, aided by his happy-go-lucky friend and piano accompanist, Cosmo Brown, has to dodge Lina's romantic overtures, especially when he falls for chorus girl Kathy Selden. With the advent of sound in motion pictures, it is decided to turn Don and Lina's new film into a "talkie" and a musical at that. The only problem is Lina's voice, which mere words cannot describe. Thus, Kathy is brought on to dub her speaking and singing voice in secret, and Don's on top of the world. But then Lina finds out...



MontanaPBS Programming Grids

Weekday Programs

TIME	MONDAY	TUESDAY	WEDNESDAY	THURSDAY	FRIDAY
MORNING					
6:00 AM	Classical Stretch: Esmonde Technique	Priscilla's Yoga Stretches	Classical Stretch: Esmonde Technique	Priscilla's Yoga Stretches	Classical Stretch: Esmonde Technique
6:30AM–10AM · Ready to Learn Children's Programs See page 24.					
10:30 AM	Sit and Be Fit	Classical Stretch: By Essentrics	Sit and Be Fit	Classical Stretch by Essentrics	Sit and Be Fit
11:00 AM	Great British Baking Show 5/20 P. Allen Smith's Garden to Table <i>begins</i>	Taste the Islands 5/15 Supper Club <i>begins</i>	Cooking with Nick Stellino	Simply Ming	Ciao Italia
11:30 AM	5/20 P. Allen Smith's Garden to Table <i>begins</i>	American Health Journal	5/2 Expeditions with Patrick McMillan <i>begins</i>	Rudy Maxa's World	Music Voyager
NOON AND AFTERNOON					
NOON	5/7 NOVA Wonders: What's Living in You?	Second Opinion	5/2 Audubon 5/9 Nuclear Requiem	5/3 Jens Jensen: The Living Green	5/4 Nature: Natural Born Rebels: Survival
12:30 PM	5/14 NOVA Wonders: Are We Alone? 5/21 NOVA Wonders: Can We Build a Brain? 5/28 NOVA Wonders: Can We Make Life?	Healthy Minds with Dr. Jeffrey Borenstein	5/16 Hawking 5/23 Roadtrip Nation: Life Hackers 5/30 STAND! Untold Stories of the Civil Rights Movement	5/10 Promise to My Father 5/17 Deeply Rooted: John Coykendall's Journey to Save Our Seeds and Stories 5/24 True North: The Sean Swarner Story 5/31 Remembering Leonard Nimoy	5/11 Nature: Natural Born Rebels: The Mating Game 5/18 Nature: Super Hum- mingbirds 5/25 Nature: The World's Most Wanted Animal
1:00 PM	Painting and Travel with Roger & Sarah Bansemer	The Best of the Joy of Painting with Bob Ross	Paint This with Jerry Yarnell	Painting with Paulson	Craftsman's Legacy
1:30 PM	Quilt in a Day	It's Sew Easy	Fons & Porter's Love of Quilting	Knit & Crochet Now 5/17 Fit 2 Stitch <i>begins</i>	Fresh Quilting
2PM–5PM · Ready to Learn Children's Programs See page 24.					



For community MontanaPBS Capitol Coverage channel, see p. 2 or go to www.montanapbs.org/about/broadcast-area



MontanaPBS Capitol Coverage

Television Montana (TVMT) is a state government broadcasting service that provides gavel-to-gavel, unedited coverage of legislative proceedings, both during and between sessions of the legislature. Viewers are invited to watch floor sessions and committee meetings live and on delayed telecasts. Visit: leg.mt.gov

Weekend Programs

SATURDAY

AM

- 5:30 Super Why!
- 6:00 Dinosaur Train
- 6:30 Daniel Tiger's Neighborhood
- 7:00 Splash and Bubbles
- 7:30 Pinkalicious & Peterrific
- 8:00 Cyberchase
- 8:30 Ready Jet Go!
- 9:00 Odd Squad
- 9:30 Wild Kratts
- 10:00 P. Allen Smith's Garden Home
- 10:30 Garden Smart
- 11:00 America's Test Kitchen from Cook's Illustrated
- 11:30 This Old House

PM

- noon Ask This Old House
- 12:30 American Woodshop
- 1:00 Woodwright's Shop
- 1:30 Sewing with Nancy
- 2:00 New Metropolis
- 5/12 Fall in Love with Music *begins*
- 2:30 Samantha Brown's Places to Love
- 3:00 Joseph Rosendo's Travelscope
- 3:30 Rudy Maxa's World
- 4:00 Desert Speaks
- 4:30 New Fly Fisher
- 5:00 Backroads of Montana
- M-M 5/5 Singing in the Wires
- M-M 5/12 Paintings, Partials and Pies
- M-M 5/19 Speed of Sound
- M-M 5/26 Special Presentation:
A Salute to Veterans
- 5:30 PBS NewsHour Weekend
- 6:00 *Check daily listings, pp. 6-21*

SUNDAY

AM

- 5:30 Curious George
- 6:00 Cat in the Hat Knows a Lot About That!
- 6:30 Sesame Street
- 7:00 Peg + Cat
- 7:30 Arthur
- 8:00 Market to Market
- M-M 5/6 Greater Montana Foundation
Presents: Primary Debate: US Senate
- M-M 5/13 Greater Montana Foundation
Presents: Primary Debate: US House
- 8:30 America's Heartland
- 9:00 In Principle
- M-M 5/6 The Rundown with Beth Saboe:
Patients in Waiting, pt 2
- 9:30 Consuelo Mack WealthTrack
- 10:00 M-M 5/6 Celebrate America Across Montana:
Tim Janis with State Choirs (10:10am)
- M-M 5/13 Keepers of the Land: Three Mont-
ana Families and their Homestead Legacies
- M-M 5/20 Montana Jails Slammed
for Solutions
- M-M 5/27 Backroads of Montana Special
Presentation: A Salute to Veterance
- 10:30 M-M 5/20 Backroads of Mont.: Speed of Sound
5/27 Rudy and Neal Go Fishing
- 11:00 M-M Montana Ag Live See p. 5
5/27 Great War: American Experience

PM

- noon Home Fires on Masterpiece
- 1:00 MontanaPBS Film Classics
- 5/6 The Big Sleep
- 5/13 Bringing Up Baby
- 5/20 Officer and a Gentleman
- 5/27 Singin' in the Rain
- 3:00 5/6 In Our Son's Name
- 5/13 Requiem for My Mother
- 5/20 Symphony of the Soil
- 5/27 Searching for Augusta: The Forgotten
Angel of Bastogne
- 4:00 5/6 Nobody Dies: A Film About a Musician, Her
Mom, and Vietnam
- 5/13 Sara's Weeknight Meals
- 5/20 American Barn Stories and Other Tales
from the Heartland
- 5/27 Sands of War
- 4:30 Masterpiece Classic:
Downton Abbey
- 5:30 PBS NewsHour Weekend
- 6:00 *Check daily listings, pp. 6-21*

M-M *See descriptions, p. 4-5



MontanaPBS is excited to offer a special Kids Club as part of our family membership program.

Kids receive a welcome packet, a signed birthday card from favorite PBS Kids program characters along with a surprise birthday gift, child's name displayed on-air on their birthday, and a quarterly kid's e-newsletter with access to fun learning opportunities. Premiere level members will also receive a stuffed plush toy with official adoption certificate, exclusive invitations, and much more!

www.montanapbs.org/kids
for more information or to sign-up

Questions? Contact Elise Peterson, Leadership Giving Manager at 406-994-6740 or elise@montanapbs.org

**MontanaPBS thanks
RSVP volunteers**



MontanaPBS Children's Programming

MontanaPBS Kids Primary HD Channel

AM Weekdays

- 6:30 Wild Kratts
- 7:00 Ready Jet Go!
- 7:30 Curious George
- 8:00 Pinkalicious & Peterrific
- 8:30 Daniel Tiger's Neighborhood
- 9:00 Daniel Tiger's Neighborhood
- 9:30 Splash and Bubbles
- 10:00 Sesame Street

PM Weekdays

- 2:00 The Cat in the Hat Knows A Lot About That!
- 2:30 Pinkalicious & Peterrific
- 3:00 Nature Cat
- 3:30 Peg + Cat
- 4:00 Arthur
- 4:30 Odd Squad
- 5:00 Odd Squad

Weekend children's programs are rated TV-Y unless otherwise indicated, and air Saturdays from 5:30am to 10am and Sundays from 5:30am to 8am.



Parental Guidelines

- TV-Y** All children
- TV-Y7** Children age 7 and over
- TV-G** General audience
- TV-PG** Parental guidance suggested:
 - V violence
 - S some sexual situations
 - L infrequent coarse language
 - D suggestive sexual dialogue
- TV-14** Parents strongly cautioned
- TV-MA** Mature audience only

Find more children's programming on the PBSKids Channel.

► Check listings on page 29.



COURTESY OF © 2017 WGBH. UNDERLYING TM/© VICTORIA KANN, OR VICTORIA KANN AND ELIZABETH KANN.

Pinkalicious & Peterrific Marathon—Think Pink!

► *Airs 7:30am Saturday; 8am, 2:30pm Weekdays*

Pinkalicious imagines creative possibilities everywhere she looks. Aimed at kids 3-5, *Pinkalicious & Peterrific* encourages viewers to engage in the creative arts and self-expression, including music, dance, theater and visual arts. Get creative with Pinkalicious, Peter and all their friends in Pinkville!

► *May 18–20: Pinkalicious & Peterrific Marathon—Think PINK! on MontanaPBS Kids Channel*

Pinkalicious has her own wand, and you can have one, too. All you need is your imagination and a few crayons or coloring pencils.

Music and art can be found anywhere, and sometimes is completely unexpected. You can create your own accidental art. Start with a blank piece of paper. Have one family member start a drawing. It can be anything—a design, pattern, or picture of something. After a minute or two, pass it on to the next family member. Keep going until everyone has had a chance to add something. Congratulations! You've created "accidental art! Are you ready for the big night?"

Make your own **Pinkatastic strawberry lemonade** using this recipe from PBS Food:

Ingredients

- 1 cup sugar
- 1 cup water
- 1 ¼ cups fresh lemon juice (from about 6 lemons)
- 1 pint strawberries, hulled and sliced
- 24-28 oz fresh cold water
- ice

Directions

Bring the sugar and water to a simmer in a small saucepot. Stir so that sugar melts completely then remove from the heat and let cool to room temperature.

Place the strawberries in a blender and process until smooth. Pour pureed strawberries in the sugar water and stir well. Add the lemon juice.

Combine the strawberry lemon syrup and the cold water in a large pitcher. Stir well and add lots of ice.

Serve lemonade with thin slices of lemons and strawberries.

M-M Made in Montana, see pp. 4-5

MontanaPBS & MontanaPBS WORLD

M-M 11th & Grant with Eric Funk

Little Jane & The Pistol Whips 5/10 7pm; 5/12 9:50pm; 5/14 2am • Wylie & The Wild West 5/24 7pm; 5/26 9:50pm; 5/28 2am

The 2 Sides Project WORLD 5/25 6pm, 11pm; 5/26 7am; 5/28 3am

A

Act of Dog WORLD 5/1 8am, 2pm; 5/4 3am, 9am; 5/6 9:30pm; 5/7 1:30am, 9:30am, 2:30pm

Age Wise Sat 1am

Amanpour On PBS Tue, Wed, Fri 10:30pm; Thu 10:45pm; Mon 11pm
WORLD Tue-Sat 2:30am; Mon-Fri 10am, 10:30am

American Barn Stories and Other Tales from the Heartlands 5/20 4pm

American Health Journal Tue 11:30am

American Woodshop Sat 12:30pm

America Reframed WORLD Sun mdnt, 7am, 3pm; Wed 6am, noon; Tue 6pm, 10pm; Sat 8pm

America's First Forest: Carl Schenck and the Asheville Experiment WORLD 5/3 8am, 2pm

America's Heartland 5/20 8:30am • 5/27 8:30am WORLD Sun 11am

Americas Now Sun 5am

America's Test Kitchen from Cook's Illustrated Sat 11am

Angle of Attack Pt 1 5/16 5am • Pt 2 5/23 5am

Antiques Roadshow Charleston, hr 2 5/2 4am • Charleston, hr 3 5/7 8pm; 5/9 4am • Tucson, hr 1 5/16 4am • Tucson, hr 2 5/21 8pm; 5/23 4am • Green Bay, hr 2 5/2 3am • Green Bay, hr 3 5/7 7pm; 5/9 3am • Newport, hr 1 5/14 7pm; 5/16 3am • Newport, hr 2 5/21 7pm; 5/23 3am • Newport, hr 3 5/28 7pm

Around the Corner with John McGivern WORLD Eagle River 5/20 10:30am • Milwaukee's West End 5/27 10:30am

Arthur Sun 7:30am; Mon-Fri 4pm

Articulate with Jim Cotter Tue 2:30am
WORLD Sun 10am

Art Wolfe's Travels to the Edge Fri 11:30pm

Asia Insight WORLD Tue 4:30am, 11:30am; Fri 9:30pm

Ask This Old House Sat noon

Audubon 5/2 noon

Austin City Limits Sturgill Simpson/Asleep at the Wheel 5/26 10:50pm; 5/28 1am • Florence + The Machine/Andra Day 5/12 10:48pm; 5/14 1am • Ed Sheeran 5/5 10pm; 5/7 1am • Zac Brown Band 5/19 9:55pm; 5/21 1am

B

M-M Backroads of Montana Singing in the Wires 5/5 5pm • Paintings, Partials and Pies 5/12 5pm • Rich with Tradition 5/14 8:30pm • Speed of Sound 5/14 8pm; 5/17 7pm; 5/19 5pm; 5/20 10:30am

M-M Backroads of Montana Special Presentation A Salute to Veterans 5/26 5pm; 5/27 10am, 8:30pm

Battleground Everglades WORLD Survival at Stake 5/6 10:30am • Glades Warriors 5/13 10:30am

BBC World News Tue, Wed, Fri 10pm; Thu 10:15pm; Mon 10:30pm

Best of the Joy of Painting Tue 1pm

Between the Lines with Barry Kibrick WORLD Wed 4:30am, 11:30am; Sun 9am

Beyond 100 Days Tue & Wed 11pm; Thu 11:13pm; Mon 11:30pm

C

Call the Midwife 5/6 7pm; 5/8 3am

Capital 5/6 10:30pm • 5/13 10:30pm • 5/20 10:33pm

Cat in the Hat Knows A Lot About That! Sun 6am; Mon-Fri 2pm

M-M Celebrate America Across Montana Tim Janis with State School Chorus (2018) 5/3 7:12pm; 5/6 10:10am

Celtic Nights: Oceans of Hope 5/7 2am

Changing Season: On the Masumoto Family Farm WORLD 5/21 5pm, 10pm; 5/22 6am, noon; 5/27 3am

Chaplains Pt 1 5/2 5am • Pt 2 5/9 5am

Chinese Couplets WORLD 5/29 7pm; 5/31 8am, 2pm

The Chinese Exclusion Act: American Experience 5/29 7pm; 5/31 1am, 4am
WORLD 5/30 5pm, 10pm; 5/31 6am, noon

Ciao Italia Fri 11am

City at War: Chicago WORLD 5/27 5pm

Civilizations God and Art 5/1 7pm; 5/3 1am, 4am • Encounters 5/8 7pm; 5/10 1am, 4am • Renaissances 5/15 7pm; 5/17 1am, 4am
WORLD God and Art 5/4 4pm, 7pm; 5/5 mdnt, 8am, 2pm • Encounters 5/11 4pm, 7pm; 5/12 mdnt, 8am, 2pm • Renaissances 5/18 4pm, 7pm; 5/19 mdnt, 8am, 2pm

Classical Stretch: By Essentrics Tue & Thu 10:30am

Classical Stretch: The Esmonde Technique Mon, Wed, Fri 6am

Closer to Truth Can Brain Alone Explain Consciousness? 5/3 11:45pm • Can Enlarged Materialism Explain Consciousness? 5/10 11:41pm • Does Consciousness Defeat Materialism? 5/17 11:30pm • Fallacies In Arguing for God?

5/24 11:30pm • What Is Philosophy of Science? 5/31 11:30pm
WORLD Fri 4:30am, 11:30am

Colliding Dreams WORLD 5/13 4pm

Consuelo Mack WealthTrack Sun 9:30am
WORLD Tue 4am, 11am; Sat 4:30am, 9am

Cooking with Nick Stellino Wed 11am

Craftsman's Legacy Fri 1pm

Curious George Sun 5:30am; Mon-Fri 7:30am

Curious George 3: Back to the Jungle 5/21 7:30am; 5/24 7am, 2pm; 5/27 5:30am

Cyberchase Mother's Day 5/19 8am • Shari Spotter and the Cosmic Crumpets 5/26 8am • A Seedy Business 5/12 8am • The Migration Situation 5/5 8am

D

Daniel Tiger's Neighborhood Sat 6:30am; Mon-Fri 8:30am, 9am

Day of Days: June 6, 1944 WORLD 5/26 noon

Debt of Honor: Disabled Veterans In American History WORLD 5/27 9pm; 5/28 1am, 9am

Deeply Rooted: John Coykendall's Journey to Save Our Seeds and Stories 5/17 noon

Defining Hope WORLD 5/1 6am, noon; 5/2 4pm; 5/6 3am

The Desert Speaks Sat 4pm

Dick Winters: "Hang Tough" WORLD 5/28 noon

Dinosaur Train Sat 6am

Direct Talk WORLD Mon-Fri 5:45am

Doc Martin Ever After 5/3 8:05pm; 5/7 mdnt • Sickness and Health 5/10 8pm; 5/14 mdnt • Guess Who's Coming to Dinner? 5/17 8pm; 5/21 12:05am • The Tamelessness of a Wolf 5/24 8pm; 5/28 mdnt • Nobody Likes Me 5/31 8pm

Doc World WORLD Tashi's Turbine 5/20 8pm; 5/21 mdnt, 8am, 2pm • Finding Samuel Lowe 5/6 8pm; 5/7 mdnt, 8am, 1pm • The Biggest Chinese Restaurant in the World/Japan: A Story of Love and Hate 5/13 7:57pm, 11:57pm; 5/14 7:57am, 12:57pm

Downton Abbey Season 2 On Masterpiece Episode 2 5/6 4:30pm • Episode 5 5/13 4:30pm • Episoder 4 5/20 4:30pm • Episode 5 5/27 4:30pm

DW News WORLD Mon-Fri 3:30pm

E

Eisenhower's Secret War From Warrior to President 5/6 3am • Building Weapons, Talking Peace 5/13 3am

Expeditions with Patrick McMillan Wed 11:30am

F

Fall in Love with Music Sat 2pm

First Civilizations Religion 5/1 8pm; 5/3 2am, 5am • Cities 5/8 8pm; 5/10 2am, 5am • Trade 5/15 8pm; 5/17 2am, 5am

Fit 2 Stitch Job Interview and Business 5/17 1:30pm • Business Casual 5/24 1:30pm • Graduations and Celebrations 5/31 1:30pm

Focus On Europe WORLD Sun 6am, 1:30pm; Sat 4pm; Wed 9:30pm

Fons & Porter's Love of Quilting Wed 1:30pm

Forever Chinatown: A Local USA/Truly CA Special WORLD 5/21 4pm, 7pm; 5/22 mdnt, 8am, 2pm; 5/25 3am, 9am

Foundations of Yoga with Tara Lee Earth Foundations of Yoga 5/26 5am

Fresh Quilting Fri 1:30pm

Frontline 5/1 9pm; 5/3 3am; 5/8 9pm; 5/10 3am; 5/22 9pm; 5/24 3am; 5/29 9pm; 5/31 3am
WORLD 5/2 7pm; 5/3 mdnt; 5/9 7pm; 5/10 mdnt; 5/16 7pm; 5/17 mdnt; 5/23 7pm; 5/24 mdnt; 5/30 7pm; 5/31 mdnt

G

Garden SMART Sat 10:30am

The Genius of George Boole 5/18 5am

Global 3000 WORLD Sun 6:30am, 2pm; Tue 9:30pm

Going to War 5/28 8pm; 5/30 1am, 3:30am

The Great American Read 5/22 7pm; 5/24 1am, 4am
WORLD 5/26 6pm, 10pm

The Great British Baking Show Patisserie 5/7 11am • The Final 5/14 11am

Greater Montana Foundation Presents Primary Debate: Republicans for U.S. Senate (2018) 5/6 8am • Primary Debate: Democrats for U.S. House (2018) 5/13 8am

Great Performances Chita Rivera: A Lot of Livin' to Do 5/11 9pm; 5/14 4am • The Opera House 5/25 8pm; 5/28 3am

Great War: American Experience 5/27 11am

H

Hawking 5/16 noon

Healthy Minds with Dr. Jeffrey Borenstein Tue 12:30pm

Hedy Lamarr: American Masters 5/18 8pm; 5/21 3am
WORLD 5/19 6pm, 10pm

Hollywood Idols William Holden: The Golden Boy 5/21 4:30am • Fred Macmuray: The Guy Next Door 5/22 5am

Evening & Overnight

M-M Made in Montana, see pp. 4-5 **PL** Pledge programming

Home Fires Season 2 On Masterpiece Episode 4 5/6 noon • Episode 5 5/13 noon • Episode 6 5/20 noon

I

I Am **WORLD** 5/1 7pm; 5/2 mdnt, 8am, 2pm; 5/5 9pm; 5/6 1am, 8am, 4pm

Independent Lens No Man's Land 5/7 9pm; 5/9 1am • Acorn and the Firestorm 5/21 9pm; 5/23 1am • True Conviction 5/2 1am • Served Like A Girl 5/28 9pm; 5/30 2am, 4:30am **WORLD** I Am Another You 5/23 4pm; 5/24 6am, noon • No Man's Land 5/9 5:30pm, 10pm; 5/10 7:30am, 1:30pm; 5/12 10am • Acorn and the Firestorm 5/23 5:30pm, 10pm; 5/24 7:30am, 1:30pm; 5/26 10am • True Conviction 5/2 5:30pm, 10:30pm; 5/3 6:30am, 12:30pm; 5/5 10am • Served Like A Girl 5/29 4:30pm, 11pm; 5/30 7am, 1pm

India: Nature's Wonderland **WORLD** 5/20 7pm, 11pm; 5/21 7am, 1pm; 5/23 3am, 9am • 5/27 7pm, 11pm; 5/28 7am; 5/30 3am, 9am

Infinity Hall Live Mon 5am

In Our Son's Name 5/6 3pm

In Principle Fri 7:30pm **WORLD** Sat 4:30pm

In the Americas with David Yetman 5/27 5am

iQ: smartparent 5/5 5am • 5/12 5am

It's Sew Easy Tue 1:30pm

J

The Jazz Ambassadors 5/4 9pm; 5/7 4am **WORLD** 5/5 6pm, 10pm

Jens Jensen the Living Green 5/3 noon **WORLD** 5/3 3am, 9am

Jeremiah **WORLD** 5/25 4pm, 7pm; 5/26 mdnt, 8am; 5/29 3am, 9am

Jesus: Countdown to Calvary 5/16 1am

Joseph Rosendo's Travelscope Sat 3pm

K

The Kate Darlene Love 5/5 11pm • Kiefer Sutherland 5/19 10:55pm

M-M Keepers of the Land Three Montana Families & Their Homestead Legacies 5/13 10am

Knit and Crochet Now 5/3 1:30pm • 5/10 1:30pm

L

Last of the Summer Wine Sat 7pm

The Last Ring Home **WORLD** 5/29 4pm; 5/30 12:30am, 8:30am, 2:30pm

Last Tango in Halifax Sun 2am

The Lawrence Welk Show Sat 6pm

Little Women On Masterpiece

Pt 1 5/13 7pm; 5/15 2:55am • Pt 2 5/20 7pm; 5/22 2:58am

Live at the Charleston Music Hall

Sam Bush 5/1 11:30pm • Elise Testone 5/8 11:30pm • Stop Light Observations 5/15 11:30pm • Sister Hazel 5/22 11:30pm • Toad The Wet Sprocket 5/29 11:30pm

Live from Lincoln Center Stephanie J. Block In Concert 5/4 8pm; 5/7 3am • Andrew Rannells In Concert 5/11 8pm; 5/14 3am

Local USA **WORLD** Ku Kanaka: Stand Tall 5/7 4pm, 7pm; 5/8 mdnt, 8am, 2pm; 5/11 3am, 9am; 5/12 11:30am; 5/13 9:30pm; 5/14 1:30am, 9:30am, 2:30pm

Lost Child: Sayon's Journey **WORLD** 5/22 5pm; 5/23 mdnt, 8am, 2pm; 5/26 3am

Louisa May Alcott: American Masters 5/20 9:05pm; 5/22 1am

M

Maggie's War: A True Story of Courage, Leadership and Valor in World War II **WORLD** 5/28 1pm

Market to Market Sat 3:30am

Masterpiece Mystery! Death Comes to Pemberley, pt 1 5/3 8:53pm • Death Comes to Pemberley, pt 2 5/10 8:50pm • Grantchester, pt 1 5/24 9pm • Grantchester, pt 2 5/31 9pm

Migrant Kitchen **WORLD** Omotenashi 5/2 3am, 9am • Beyond Pho 5/2 3:30am, 9:30am

M-M Montana AG Live The Dirt on Montana Soil Changes 5/6 11:02am • Where Would We Be Without Bees? 5/6 6pm; 5/13 11am • Another Cropping System Angle 5/13 6pm; 5/20 11am • Nafta: How Does It Affect Montana's Ag Community? 5/20 6pm

M-M Montana Jails Slammed for Solutions 5/17 7:30pm; 5/20 10am

M-M Montana Mosaics: 20th Century People and Events History of Montana's Native Americans 5/31 7:30pm

MontanaPBS Film Classics The Big Sleep 5/5 8:02pm; 5/6 1pm • Bringing Up Baby 5/12 8:02pm; 5/13 1pm • Officer and a Gentleman 5/19 8:02pm; 5/20 1pm • Singin' in the Rain 5/26 8:02pm; 5/27 1pm

MotorWeek Wed 11:30pm

Moveable Feast with Fine Cooking Fresno, California 5/14 11:30pm

Mr. Tanimoto's Journey **WORLD** 5/15 7:30pm, 11:30pm; 5/16 7:30am, 1:30pm; 5/19 9:30pm; 5/20 1:30am, 8:30am, 4:30pm; 5/23 11:30pm

Music Voyager Fri 11:30am

My Love Affair with the Brain: The Life & Science of Dr. Marian Diamond **WORLD** 5/17 5pm, 10pm; 5/18 6am, noon

N

Nasser's Republic: The Making of Modern Egypt 5/27 3am

National Memorial Day Concert 5/27 7pm, 9pm; 5/29 1am, 4am

Nature Super Hummingbirds 5/16 7pm; 5/18 3am, noon; 5/20 1am • Giraffes: Africa's Gentle Giants 5/30 7pm; 6/1 3am • Natural Born Rebels: Survival 5/2 7pm; 5/4 3:05am, noon; 5/6 1am • Natural Born Rebels: The Mating Game 5/9 7pm; 5/11 3:05am, noon; 5/13 1am • The World's Most Wanted Animal 5/23 7pm; 5/25 3am, noon; 5/27 1am **WORLD** Super Hummingbirds 5/20 6pm, 10pm; 5/21 6am, noon • Natural Born Rebels: Survival 5/6 6pm, 10pm; 5/7 6am, noon • Natural Born Rebels: The Mating Game 5/13 6pm, 10pm; 5/14 6am, noon • The World's Most Wanted Animal 5/27 6pm, 10pm; 5/28 6am

Nature Cat Mon-Fri 3pm

New Fly Fisher Sat 4:30pm

New Metropolis A Crack in the Pavement 5/20 11:33pm • The New Neighbors 5/5 2pm; 5/27 11:30pm

Newsroom Tokyo **WORLD** Mon-Fri 5am

NHK Newsline Tue-Thu 12:30am; Fri 12:39am **WORLD** Mon-Fri 3pm

Nightly Business Report Mon-Fri 5:30pm **WORLD** Tue-Sat 2am; Mon-Fri 9pm

Nobody Dies: A Film About a Musician Her Mom and Vietnam 5/6 4pm **WORLD** 5/28 4pm, 7pm; 5/29 mdnt, 8am, 2pm; 6/1 3am

Nothing Left to Lose **WORLD** 5/15 5pm; 5/16 mdnt, 8am, 2pm

M-M Not Yet Begun to Fight 5/27 6pm; 5/29 3am

NOVA Inside Einstein's Mind 5/30 9pm; 6/1 2am, 5am • Life's Rocky Start 5/9 9pm; 5/11 2:07am, 5:01am • Search for the Super Battery 5/2 9pm; 5/4 2:07am, 5:02am • Extreme Animal Weapons 5/23 9pm; 5/25 2am, 5am **WORLD** Inside Einstein's Mind 5/31 5pm, 10pm • Life's Rocky Start 5/10 5pm, 10pm; 5/11 6am, noon • Search for the Super Battery 5/3 5pm, 10pm; 5/4 6am, noon • Extreme Animal Weapons 5/24 5pm, 10pm; 5/25 6am, noon

NOVA Wonders What's Living In You? 5/2 8pm; 5/4 1:09am, 4:04am; 5/6 mdnt; 5/7 noon • Are We Alone? 5/9 8pm; 5/11 1:09am, 4:03am; 5/13 mdnt; 5/14 noon • Can We Build A Brain? 5/16 8pm; 5/18 1am, 4am; 5/20 mdnt; 5/21 noon • Can We Make Life? 5/23 8pm; 5/25 1am, 4am; 5/27 mdnt; 5/28 noon • What's The Universe Made Of? 5/30

8pm; 6/1 1am, 4am **WORLD** What's Living In You? 5/3 6pm, 11pm; 5/4 7am, 1pm • Are We Alone? 5/10 6pm, 11pm; 5/11 7am, 1pm • Can We Build A Brain? 5/17 6pm, 11pm; 5/18 7am, 1pm • Can We Make Life? 5/24 6pm, 11pm; 5/25 7am, 1pm • What's The Universe Made Of? 5/31 6pm, 11pm

Nuclear Requiem 5/9 noon

O

Odd Squad Sat 9am; Mon-Fri 4:30pm, 5pm

Of Race and Reconciliation **WORLD** 5/30 4pm

Omaha Beach: Honor and Sacrifice 5/26 1pm

On Story **WORLD** Sun 4am, 2:30pm; Mon 4:30pm

Open Mind Sat 2am **WORLD** Mon 4:30am, 11:30am; Sun 5:30am, 1pm

Orchard House: Home of Little Women **WORLD** 5/22 7:30pm, 11:30pm; 5/23 7:30am, 1:30pm; 5/26 9:30pm; 5/27 1:30am, 8:30am, 4:30pm

Oregon's Animation Magic **WORLD** 5/12 7:30pm, 11:30pm; 5/14 4pm; 5/18 3am, 9am

Osiris REX: Countdown to Launch 5/6 11:30pm

Overheard with Evan Smith Sat 12:30am **WORLD** Mon 4am, 11am

P

Pacific Heartbeat **WORLD** Sun 2am; Tue 7am, 1pm; Mon 6pm, 11pm

Painting and Travel with Roger & Sarah Bansemer Mon 1pm

Painting with Paulson Thu 1pm

Paint This with Jerry Yarnell Wed 1pm

P. Allen Smith's Garden Home Sat 10am

P. Allen Smith's Garden to Table Pizza Party 5/21 11am • Bunches of Blueberries 5/21 11:27am • Tomato Festival 5/28 11am • Orchard Fruit 5/28 11:27am

Passing Poston: An American Story **WORLD** 5/16 5pm, 10pm; 5/17 6am, noon; 5/19 10am

PBS NewsHour Mon-Fri 6pm **WORLD** Tue-Sat 1am; Mon-Fri 8pm

PBS NewsHour Weekend Sat, Sun 5:30pm

Peg + Cat Sun 7am; Mon-Fri 3:30pm

Pinkalicious & Peterrific Sat 7:30am; Mon-Fri 8am, 2:30pm

Poetry in America **WORLD** Sat 5:30pm

Polytrauma Rehab in the Va: Compassionate Care **WORLD** 5/28 5pm, 10pm; 5/29 6am, noon

POV WORLD Web Junkie 5/1 5pm, 11pm; 5/2 7am, 1pm; 5/5 3am • Ai Weiwei: The Fake Case 5/8 4pm, 7pm, 11pm; 5/9 7am, 1pm; 5/12 9pm; 5/13 1am, 8am • The Birth of Sake 5/9 4pm; 5/10 6am, noon • My Love, Don't Cross That River 5/8 5pm; 5/9 mdnt, 8am, 2pm; 5/13 3am; 5/15 3am, 9am

Power to Heal: Medicare and the Civil Rights Revolution

WORLD 5/3 4pm, 7pm; 5/4 mdnt, 8am, 2pm

Priscilla's Yoga Stretches

Tue & Thu 6am

Project Asteroid: Mapping Benu

5/13 11:30pm

A Promise to My Father

5/10 noon

Protecting Paradise: The Western Everglades

5/9 2:30am

Q

Quietest Place on Earth

WORLD 5/20 5pm; 5/24 3am, 9am

Quilt in a Day

Mon 1:30pm

R

Ready Jet Go!

Mon-Fri 7am; Sat 8:30am

Reel South

WORLD Honky Tonk Heaven 5/1 4pm

Relocation, Arkansas: Aftermath of Incarceration

WORLD 5/16 6pm, 11pm; 5/17 7am, 1pm; 5/19 11am; 5/22 4pm

Remembering Leonard Nimoy

5/31 noon

Requiem for My Mother

5/13 3pm
WORLD 5/13 7pm, 11pm; 5/14 7am; 5/17 3am, 9am

Resistance at Tule Lake

5/6 5pm; 5/8 3am, 9am

Roadtrip Nation

WORLD Don't Forget Where You Came From 5/7 5pm, 10pm; 5/8 6am, noon; 5/12 3am • Cross The Ocean, Build Bridges 5/7 5:30pm, 10:30pm; 5/8 6:30am, 12:30pm; 5/12 3:30am • Know Where Home Is 5/14 5pm, 10pm; 5/15 6am, noon; 5/19 3am • You Can Guide Your Future 5/14 5:30pm, 10:30pm; 5/15 6:30am, 12:30pm; 5/19 3:30am

Roadtrip Nation: Life Hackers

5/23 noon

Rough Cut: Woodworking with Tommy Mac

Old Shop/New Shop 5/26 12:30pm

Royal Wedding Watch (W.T.)

A Wedding Is Announced 5/14 9pm; 5/16 2am • What to Wear 5/15 9pm; 5/17 3am • The Ceremony 5/16 9pm; 5/18 2am • How to Celebrate 5/17 9pm; 5/20 3am • Happily Ever After 5/18 9:30pm; 5/21 2am

Rudy and Neal Go Fishing

5/27 10:30am

Rudy Maxa's World

Thu 11:30am; Sat 3:30pm

M-M The Rundown with Beth Saboe

Enemy On Our Shores 5/31 7pm • Patients in Waiting, pt 2 5/3 6:59pm; 5/6 9:58am

S

Samantha Brown's Places to Love

Sat 2:30pm

Sands of War

5/27 4pm

Sara's Weeknight Meals

Mom's Day Off 5/13 4pm

Scully/The World Show

Fri 11pm
WORLD Thu 4am, 11am, 9:30pm

Searching for Augusta: The Forgotten Angel of Bastogne

5/27 3pm

Second Opinion

Tue noon
WORLD Sat 4am, 9:30am; Thu 4:30am, 11:30am

Secrets of the Dead

WORLD Vampire Legend 5/10 4pm, 7pm; 5/11 mdnt, 8am, 2pm; 5/15 4pm; 5/16 3am, 9am; 5/17 8am, 2pm • Jamestown's Dark Winter 5/17 4pm, 7pm; 5/18 mdnt, 8am, 2pm; 5/22 3am, 9am • The Real Trojan Horse 5/24 4pm, 7pm; 5/25 mdnt, 8am, 2pm; 5/31 3am, 9am • The Mona Lisa Mystery 5/31 4pm, 7pm; 6/1 mdnt

Sesame Street

Sun 6:30am; Mon-Fri 10am

Sewing with Nancy

Sat 1:30pm

Simply Ming

Thu 11am

Sit and Be Fit

Mon, Wed, Fri 10:30am

Soldier On: Life After Deployment

5/27 10:30pm

Splash and Bubbles

Sat 7am; Mon-Fri 9:30am

STAND! Untold Stories of the Civil Rights Movement

5/30 noon

Start Up

WORLD Sun 11:30am

Still Open All Hours

Sat 7:31pm

Stories from the Stage

WORLD Tue 12:30am, 8:30am, 2:30pm; Fri 3:30am, 9:30am; Mon 7:30pm

Stories in Thread

5/9 11:30pm

Story of China

Mon 2am; Sat 6am, noon; Fri 5pm, 10pm

Super Why!

Sat 5:30am

SupperClub

Tue 11am

Survivors of Malmedy: December 1944

WORLD 5/26 2pm

Symphony of the Soil

5/20 3pm

T

Tale of Two Sisters

Amelia Earhart 5/6 9:30pm • Jackie Kennedy Onassis 5/13 9:35pm

Taste the Islands

Pineapple Expressed 5/1 11am

They Were Our Fathers

WORLD 5/25 5pm, 10pm; 5/26 6am; 5/28 2am

This Is America & The World

Sat 2:30am

This Old House

Sat 11:30am

The This Old House Hour

Sat 4am

To the Contrary with Bonnie Erbe

Sat 1:30am
WORLD Wed 4am, 11am; Sun 4:30am, noon; Sat 5am, 3pm; Mon 9:30pm

Travel Detective with Peter Greenberg

Tue 5:30am

True North: The Sean Swarner Story

5/24 noon

Trust Docs

WORLD Sat 5pm

Truth About Money with Ric Edelman

Tue-Thu, Sat mdnt; Fri 12:11am

Turning the Tide

WORLD 5/1 9am

Tyrus Wong: American Masters

WORLD 5/12 6pm, 10pm

U

Unconquered Seminoles

5/23 2:30am

Unforgotten Season 2 On Masterpiece

Episode 2 5/6 8pm; 5/8 1am, 4am • Episode 3 5/13 8:05pm; 5/15 1am, 4am

Untold Stories: Mina Miller Edison, The Wizard's Wife

WORLD 5/19 7:30pm, 11:30pm

W

War for Guam

WORLD 5/20 9pm; 5/21 1am, 9am

Washington Week

Sat 3am; Fri 7pm
WORLD Sun 5am, 12:30pm; Sat 5:30am, 3:30pm

We Knew What We Had: The Greatest Jazz Story Never Told

WORLD 5/5 7pm, 11pm; 5/9 3am, 9am

Well Read

WORLD Fri 4am, 11am; Sun 9:30am

When Learning Comes Naturally

5/19 5am

Wild Kratts

Mon-Fri 6:30am; Sat 9:30am

Wild Weather

WORLD 5/6 7pm, 11pm; 5/7 7am; 5/10 3am, 9am; 5/16 4pm

Wings for Maggie Ray

5/28 2pm

The Woodwright's Shop

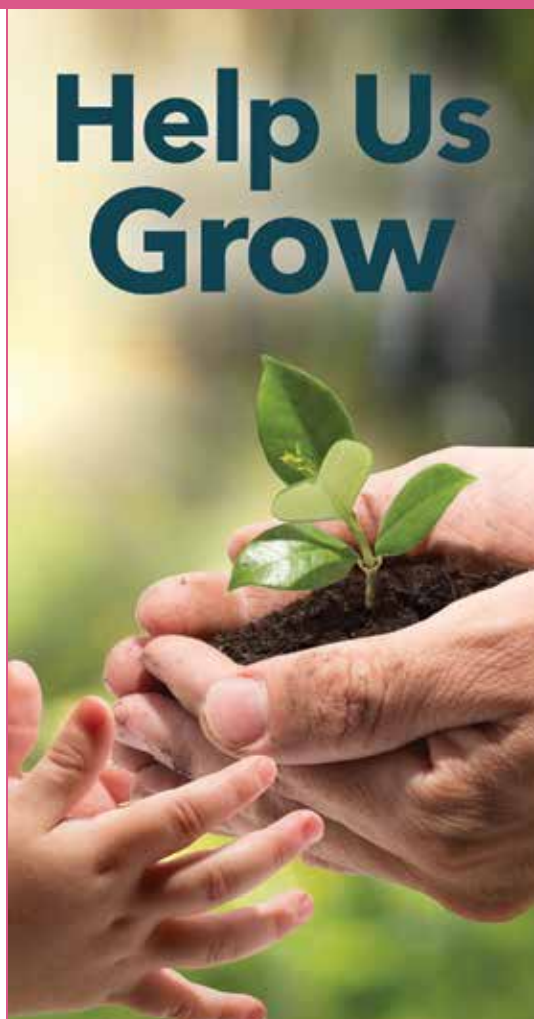
Sat 1pm

Words on the Wind

5/2 2:30am

World on the Brink

Sun 4am



Help Us Grow

2 for 1 Match Challenge

For every \$2 you contribute to the MontanaPBS Endowment, founding donors Arne & Steffi Siegel will match \$1 of their own gift up to \$100,000.



ENDOWMENT

Through the Montana Community Foundation

Call Crystal Beatty at 406-994-6221 or Visit MontanaPBS.org/Endowment for More Information

A

American Woodshop Sun & Wed
8:30am; Wed 2:30pm

America's Test Kitchen from Cook's Illustrated Sun, Mon, Wed, Fri
12:30am; Sun, Tue, Thu 6:30pm; Sun,
Tue, Thu, Sat 10pm

Annabel Langbein: The Free Range Cook 5/2 6:30am, 12:30pm

Ask This Old House Mon & Thu 2am;
Sun & Wed 8am, 8pm; Sun 4pm

B

Baking with Julia Sun & Wed 6am;
Wed noon

Bare Feet with Mickela Mallozzi
Tue, Thu, Sat 11:30pm

Beads, Baubles and Jewels
Mon 9:30am, 3:30pm

Best of the Joy of Painting Tue & Thu
4:30am, 10:30am

Born to Explore with Richard Wiese
Mon & Fri 11:30pm

Burt Wolf: Travels & Traditions
Mon & Thu 3am; Sun & Wed 9pm

C

Chef's Life Sun, Tue, Thu, Sat 1am;
Sat 9am, 12:30pm, 9pm; Mon, Wed,
Fri 7pm

Christopher Kimball's Milk Street Television Tue & Thu 5:30pm

Ciao Italia Sun & Wed 5:30am; Sat
8:30am, 8:30pm; Wed 11:30am

Cook's Country Tue, Thu, Sat 12:30am;
Sat noon, 3:30pm; Mon, Wed, Fri
6:30pm, 10pm

Craft in America Wed 9:30am, 3:30pm

Craftsman's Legacy
Mon & Fri 8:30am, 2:30pm

Curious Traveler Tue & Thu 7:30am,
1:30pm

D

Destination Craft with Jim West
Sun & Wed 11:30pm

Dining with the Chef Tue 6am, noon

E

Ellie's Real Good Food Sat 5:30am,
5:30pm; Sun & Wed 5pm, 10:30pm

Essential Pepin 5/12 4:30am, 4:30pm;
5/13 10:30am

F

Family Ingredients Tue & Thu 5am,
11am; Tue, Thu, Sat 11pm

Family Travel with Colleen Kelly
Tue & Thu 7am, 1pm

Fresh Quilting Fri 4am, 10am

Fringe Benefits Pittsburgh 5/19
9:30am, 9:30pm; 5/20 3:30pm

G

Garden SMART Sun & Wed 9am;
Wed 3pm

George Hirsch Lifestyle Sat 5am,
5pm; Sun & Wed 6:30am; Wed 12:30pm

Globe Trekker Sun, Tue, Sat 2:30am;
Sat 2pm; Mon & Fri 8:30pm

Growing a Greener World Tue & Thu
9am, 3pm; Sat 10:30am, 10:30pm

H

Hubert Keller: Secrets of a Chef
Mon & Fri 6am, noon

I

In the Americas with David Yetman
Wed 7:30am, 1:30pm

Islands Without Cars with Kira Hesser Italy's Aeolian Islands 5/15 7:30am,
1:30pm • Croatia's Dalmatian Coast
5/17 7:30am, 1:30pm • The Channel
Island of Sark 5/22 7:30am, 1:30pm
• Ireland's Inis Meain 5/24 7:30am,
1:30pm • The Greek Island of Hydra
5/29 7:30am, 1:30pm • France's Isle of
Porquerolles 5/31 7:30am, 1:30pm

It's Sew Easy Thu 4am, 10am

J

Jacques Pepin: Heart & Soul
Sat 11am; Mon & Fri 5:30pm

Jacques Pepin: More Fast Food My Way Mon & Fri 6:30am, 12:30pm;
Sat 8am, 8pm

The Jazzy Vegetarian Sat 6am,
7:30am, 6pm, 7:30pm

Joanne Weir's Plates and Places Dai-
ly 1:30am; Sat 1pm; Sun-Fri 4:30pm,
7:30pm

Joseph Rosendo's Travelscope
Easter Island 5/28 7:30am, 1:30pm;
5/31 8:30pm; 6/1 2:30am

Journeys in Japan Sun 7:30am

K

Kitchen Wisdom of Cecilia Chiang
Mon & Fri 5am, 11am, 11pm

Knit and Crochet Now Sun & Wed 4am

L

Landscapes Through Time with David Dunlop Sun & Wed 4:30am;
Wed 10:30am

Landscapes Through Time with David Dunlop (Expired) J.M.W. Turner's
Visions of Veni 5/30 4:30am, 10:30am

Lidia's Kitchen Sun, Tue, Thu, Sat
mdnt, 3:30am; Sat 11:30am, 3pm; Mon,
Wed, Fri 6pm, 9:30pm

Lucky Chow Ramen Mania 5/21 5am,
11am, 11pm • Koreatown U.S.A 5/25
5am, 11am, 11pm • Northern Thai Cui-
sine 5/28 5am, 11am, 11pm • Filipino
Entrepreneurs 6/1 5am

M

Make48 5/18 9:30am, 3:30pm • 5/25
9:30am, 3:30pm

Make It Artsy Under and Over 5/4
9:30am, 3:30pm • Grand Opening:
Proper Attire 5/11 9:30am, 3:30pm

Make Your Mark Sun 9:30am

Martha Bakes Mon, Wed, Fri mdnt,
3:30am; Sat 9:30am; Sun, Tue, Thu
6pm; Sun, Tue, Thu, Sat 9:30pm

Mexico -- One Plate at a Time with Rick Bayless Sun & Wed 5:30pm

Moveable Feast with Fine Cooking
Mon, Wed, Fri 1am; Sun, Tue, Thu 7pm

Music Voyager Mon & Fri 7am, 1pm

My Greek Table with Diane Kochilas
Thu 6am, noon

N

New Orleans Cooking with Kevin Belton Tue & Thu 6:30am, 12:30pm

New Scandinavian Cooking Sun &
Wed 5am, 11pm; Wed 11am

Nick Stellino: Storyteller in the Kitchen To Spoon or Not to Spoon 5/29
6:30am, 12:30pm • Being Italian 5/31
6:30am, 12:30pm

P

Paint This with Jerry Yarnell Mon &
Fri 4:30am, 10:30am

P. Allen Smith's Garden Home
Mon & Fri 9am, 3pm; Sat 10am

P. Allen Smith's Garden to Table
Pizza Party 5/18 6am, noon • Bunches
of Blueberries 5/12 6:30am, 6:30pm;
5/13 12:30pm; 5/21 6am, noon • To-
mato Festival 5/25 6am, noon • Orchard
Fruit 5/28 6am, noon • Crazy for Berries
5/12 4am, 4pm; 5/13 10am

Pati's Mexican Table Sun 10am,
10:30am, 11am, 11:30am, noon,
12:30pm, 1pm, 1:30pm, 2pm, 2:30pm,
3pm, 3:30pm; Tue & Thu 5pm, 10:30pm

Q

Quilting Arts Mon 4am, 10am

R

Rick Steves' Europe Mon & Thu
2:30am; Weekdays 2pm; Sun & Wed
8:30pm; 5/19 4am, 4pm; 5/20 10am;
5/19 8am, 8pm; 5/19 5:30am, 5:30pm;
5/20 11:30am; 5/19 9am, 9pm; 5/20
3pm

S

Sara's Weeknight Meals Soul of the
South 5/21 5:30pm; 5/26 11am • Best
Loved Italian Recipes 5/25 5:30pm •
Beantown 5/28 5:30pm

Sewing with Nancy Tue 4am, 10am

Simply Ming Sat 7am, 7pm; Mon & Fri
5pm, 10:30pm

Smart Travels: Europe with Rudy Maxa Wed 7am, 1pm

Start Up Tue & Thu 9:30am, 3:30pm •
5/19 5am, 5pm; 5/20 11am

Steven Raichlen's Project Smoke Tue
& Thu 5:30am, 11:30am • Much at
Steak 5/26 4am, 4pm; 5/27 10am •
Hot Stuff 5/26 4:30am, 4:30pm; 5/27
10:30am • Fire Meets Water 5/26 5am,
5pm; 5/27 11am • Fire Birds 5/26
5:30am, 5:30pm; 5/27 11:30am • Pac-
Rim Smoke 5/26 6am, 6pm; 5/27 noon
• Where There's Smoke 5/26 6:30am,
6:30pm; 5/27 12:30pm • Extreme
Smoke 5/26 7am, 7pm; 5/27 1pm •
Perfect Hog 5/26 7:30am, 7:30pm;
5/27 1:30pm • Bbq's Trinity 5/26 8am,
8pm; 5/27 2pm • Mexican Smoke 5/26
8:30am, 8:30pm; 5/27 2:30pm • Global
Tailgate 5/26 9am, 9pm; 5/27 3pm •
Project Smoke Road Trip 5/26 9:30am,
9:30pm; 5/27 3:30pm

T

Taste the Islands
Mon & Fri 5:30am, 11:30am

This Old House Sun, Tue, Sat 2am;
Mon & Fri 8am, 4pm, 8pm; Sat 1:30pm

Trails to Tsukiji Sun 7am

Travelscope Wed & Fri 2:30am; Mon &
Fri 7:30am, 1:30pm; Tue & Thu 8:30pm

Travels with Darley Guadeloupe Islands
Caribbean Adventures 5/29 7am, 1pm
• Maryland's Eastern Shore 5/31 7am,
1pm • Little Rock, Arkansas 5/19 6am,
6pm; 5/20 noon • France's Western
Front Part I 5/19 7am, 7pm; 5/20 1pm

Two for the Road Wed & Fri 3am; Tue
& Thu 9pm

W

Woodsmith Shop Tue & Thu 8:30am,
2:30pm

The Woodwright's Shop Wed & Fri
2am; Tue & Thu 8am, 4pm, 8pm



COURTESY OF KQED

Take a culinary journey with Joanne Weir through some of the most wonderful destinations in the world.

FEATURED ON
MONTANAPBS create™

Joanne Weir's Plates and Places

► *Airs daily 1:30am; Sat 1pm; Sun-Fri 4:30pm, 7:30pm on MontanaPBS Create*

Take a culinary journey with Joanne Weir through some of the most flavorful destinations in the world. In 13 brand new episodes of *Joanne Weir's Plates and Places*, Joanne goes on a quest to find the key ingredient needed to create extraordinary dishes: inspiration! Far beyond simply following recipes, she shares the lessons and stories behind them in each episode. Throughout this cinematic new series, Joanne's curious nature and passion for good food combine for a thrilling adventure. From discovering unique spice blends prepared by a shopkeeper in a Moroccan marketplace to learning how to create perfect risotto from a rice grower in Italy, Joanne's mission is clear: to create enticing meals using readily available ingredients, easy to grasp techniques and inspiration from people and cultures here at home and around the world. Exploring the destinations, meeting the local people, and cooking with great ingredients which have inspired Joanne through the years, *Plates and Places* is a first class ticket to your own exhilarating culinary adventures.

Overnight repeats 2pm-9:30pm episodes

AM

- 6:00 Fetch! with Ruff Ruffman
- 6:30 Cyberchase
- 7:00 Cyberchase
- 7:30 WordGirl
- 8:00 Arthur
- 8:30 Arthur
- 9:00 The Cat in the Hat Knows a Lot About That!
- 9:30 Sesame Street
- 10:00 Peg + Cat
- 10:30 Super Why!
- 11:00 Clifford The Big Red Dog/Clifford's Puppy Days
- 11:30 Caillou
- Noon Sid the Science Kid

Find a 24-hour MontanaPBS Kids channel in your community, See p. 2 or go to www.montanapbs.org/about/broadcast-area

PM

- 12:30 WordWorld
- 1:00 Peep and the Big Wide World
- 1:30 Super Why!
- 2:00 Sesame Street
- 2:30 Dinosaur Train
- 3:00 Dinosaur Train
- 3:30 Splash and Bubbles
- MDNT 4:00 Daniel Tiger's Neighborhood
- 4:30 Daniel Tiger's Neighborhood
- 1 AM 5:00 Pinkalicious & Peterific
- 1:30 5:30 Ready Jet Go!
- 2:00 6:00 Nature Cat
- 2:30 6:30 Nature Cat
- 3:00 7:00 Wild Kratts
- 3:30 7:30 Wild Kratts
- 4:00 8:00 Odd Squad
- 4:30 8:30 Odd Squad
- 5:00 9:00 Arthur
- 5:30 9:30 Arthur

Watch PBS KIDS Family Nights on select weeknights and every Friday, Saturday and Sunday evening.

Daniel Tiger's Neighborhood: Meet the New Baby

► 5/4, 5/5, 5/6 7pm & 8pm

Odd Squad Saves the World

► 5/11, 5/12, 5/13 7pm & 8pm

Pinkalicious & Peterific

► 5/18, 5/19, 5/20 7pm, 7:30pm, 8pm & 8:30pm

Peg + Cat Mystery Hour

► 5/25, 5/26, 5/27 7pm & 8pm

COURTESY OF THE FRED ROGERS COMPANY



Grandpere and Daniel get a message that the baby has arrived! Daniel can't wait to meet his new baby sister in Daniel Tiger's Neighborhood: Meet the New Baby. Airs 5/4, 5/5, and 5/6 7pm and 8pm on the MontanaPBS Kids channel.

Business Partners



Your business or organization

can reach thousands of thoughtful Montana consumers in 400 communities. Your underwriting message on MontanaPBS is affordable and effective. To learn more, call me today!

McKenna Mehl · (406) 994-6132 · mckenna@montanapbs.org

- Allegra Bozeman** www.allegrabozeman.com
- Big Sky Journal** www.bigskyjournal.com
- Bozeman Daily Chronicle** www.dailychronicle.com
- Bozeman Magazine** www.bozemanmagazine.com
- The Bozone** www.bozone.com
- Cashman Nursery** cashmannursery.com
- Fay Ranches** www.fayranches.com
- Filmlites Montana** www.filmlitesmt.com
- First Security Bank** www.ourbank.com
- Gallatin River Ranch** www.GallatinRiverRanch.com
- Gallatin Valley Catering** www.gallatinvalleycatering.com
- The Greater Montana Foundation** www.greatermontana.org
- Jem Shoppe Jewelers** www.jemshoppe.com
- Jereco Studios** www.jerestudios.com
- KGLT FM** www.kglit.net
- Last Wind-Up** www.LastWindUp.com
- Leadership Montana** www.leadershipmontana.org
- Lewis & Clark National Historic Trail Interpretive Center**
www.fs.fed.us/r1/lewisclark/lcic.htm
- Montana Cooperative Development Center** www.mcdc.coop
- Montana Expressions** www.montanaexpressions.com
- Montana Farmers Union** www.montanafarmersunion.com
- Montana State University** www.montana.edu
- Montana State University Communications** www.montana.edu
- Montana State Parks** www.stateparks.mt.gov
- Montana Office of Tourism** www.visitmt.com
- Montana Party Rentals** www.MontanaPartyRentals.com
- Montana Public Radio** www.mtpr.org
- Montana: The Magazine of Western History** www.montanahistoricalsociety.org
- Nature Conservancy** www.nature.org/montana
- North American Auction Company** www.NorthAmericanAuctionCompany.com
- NorthWestern Energy** www.northwesternenergy.com
- Rowman and Littlefield Publishers** www.rowman.com
- Shadow Hearth & Home** www.shadowhearth.com
- University of Montana** www.umt.edu
- Yellowstone Public Radio** www.ypradio.org

THANK YOU!

to all of our business partners and members

Program Underwriters



Gilhousen Family Foundation
 Greater Montana Foundation
 Quinn's Hot Springs Resort & Jackson
 Hot Springs Lodge
 Jack & Donna Ostrovsky
 Montana State University Office of the
 President
 Music Villa & Gibson Acoustic Guitar
 Daryl Zielger Henning
 Bob & Karin Utzinger
 Filmlites Montana
 Gary & Sue Andrews
 Tony & Martha Biel
 Bill & Jane Gum
 Marie Gary Agency
 Jeff & Rona Davison
 Dr. Bill & Patty Fraser
 Jack & Linda Hyyppa
 Bill & Anita Kearns
 Esther Nelson
 Mary Routhier
 James & Beatrice Taylor
 Gregory Young & Elizabeth Croy
 Mike & Ginny Fischer
 Tim & Kathy Hammond
 Peg Wherry
 Mary & Alan Brutger
 Nancy & Thomas Hildner
 Bob & Suzy Sterling
 Nancy Cornwell & Stan Downs
 Ellen & Terry Alborn
 Sharon Eversman
 Alice Meister & George Baskin
 Carol & Glenn Lalani
 Larry & Gail Larson
 Julia McCarthy
 Janet M. Bjork

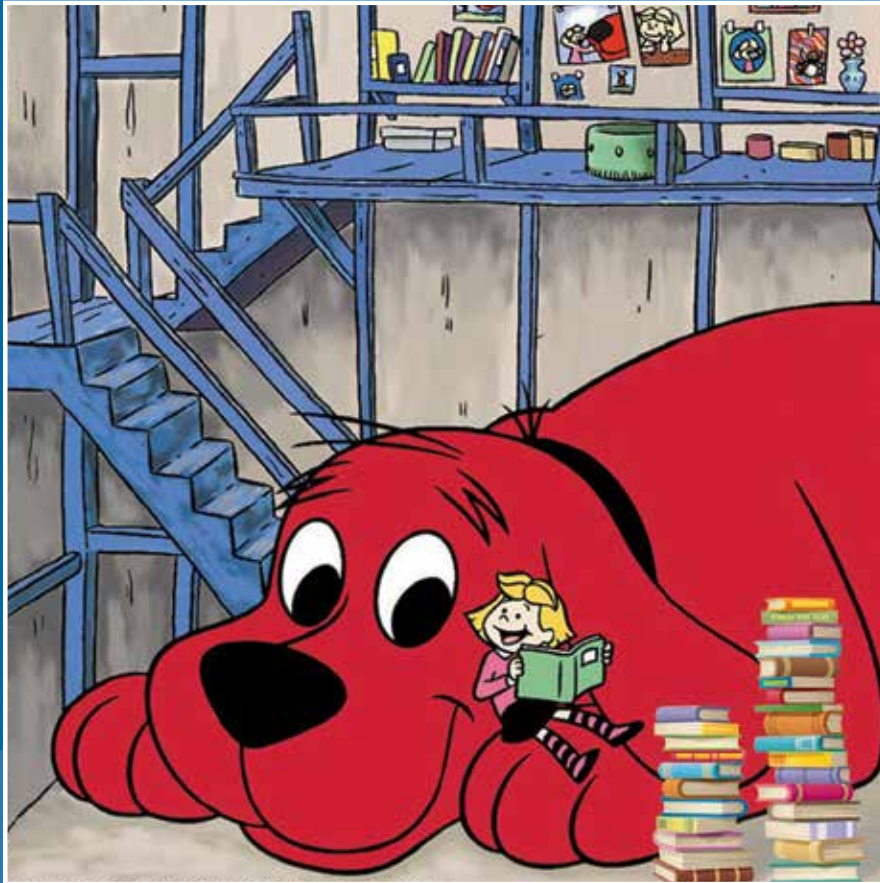


Greater Montana Foundation
 Big Sky Film Grant
 The Trailhead



Cashman's Nursery and Landscaping
 Montana State University Extension
 Montana State University College of
 Agriculture/Ag Experiment Stations
 Montana Wheat and Barley Committee
 Montana Department of Agriculture
 Montana Bankers Association/
 Bancserve, Inc.
 Gallatin Gardeners Club

CLIFFORD THE BIG RED DOG GOES ON TOUR THIS SUMMER!



Join MontanaPBS for one of our fun-filled library stops this summer. Events include a variety of activities for kids and a picture booth with Clifford the Big Red Dog. You will have an opportunity to sign-up for the NEW MontanaPBS Kid's Club and receive a stuffed plush toy and kid's club t-shirt.

JUNE 2018

6/13 White Sulphur Springs 10am
6/13 Great Falls 3pm
6/14 Cut Bank 10:30am
6/14 Browning 3pm
6/15 Whitefish 12pm
6/16 Polson 9am

6/18 Deerlodge 10am
6/18 Missoula 3pm
6/19 Hamilton 11am
6/19 Darby 3pm
6/20 Dillon 10am
6/20 Twin Bridges 2pm

6/25 Columbus 10am
6/25 Laurel 2pm
6/26 Billings 10am
6/26 Red Lodge 2pm
6/27 Big Timber 10am
6/27 Livingston 2pm

Please check your local library event schedule for times. We hope to see you there!

For more information or if you have questions, please contact Elise Peterson, Leadership Giving Manager, at 406-994-6740 or elise@montanapbs.org



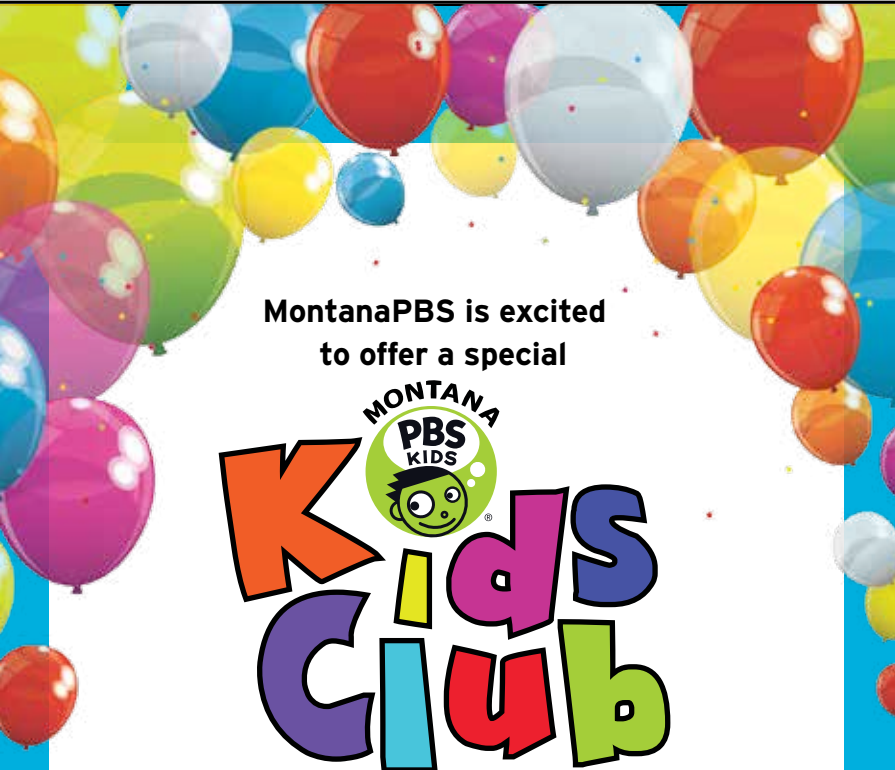
Friends of MontanaPBS

PO Box 10715 • Bozeman, MT 59719 • 866.832.0829

Please deliver by 4/27/2018

Nonprofit Organization
U.S. Postage
PAID
Permit No. 714
Bozeman, MT 59715

WWW.MONTANAPBS.ORG A SERVICE OF MONTANA STATE UNIVERSITY-BOZEMAN AND THE UNIVERSITY OF MONTANA-MISSOULA



MontanaPBS is excited
to offer a special



as part of our family membership program.

Kids receive a welcome packet filled, a signed birthday card from favorite PBS Kids program characters along with a surprise birthday gift, child's name displayed on-air on their birthday, and a quarterly kid's e-newsletter with access to fun learning opportunities. Premiere level members will also receive a stuffed plush toy of their choice with official adoption certificate, exclusive invitations to special kids events, and much more!

www.montanapbs.org/kids
for more information or to sign-up

Questions? Contact Elise Peterson, Leadership Giving Manager at 406-994-6740 or elise@montanapbs.org



APT ONLINE

Meredith Vieira hosts The Great American Read.

The Great American Read

► **Airs 7pm Tuesday, May 22**
Also 5/24 1am, 4am

The Great American Read, a new eight-part television competition and nationwide campaign created in partnership with the production company Nutoxia, explores the power of books and the joy of reading through the lens of America's 100 best-loved novels, as voted on by the public.

Many key authors, celebrities and notable figures in the entertainment, sports, news and literary worlds will join Vieira in lending their voices and passion to *The Great American Read*. Margaret Atwood, Jenna and Barbara Bush, Chelsea Clinton, Junot Díaz, Morgan Freeman, Lauren Graham, John Green, Gayle King, George R. R. Martin, Shaquille O'Neal, Sarah Jessica Parker, Jason Reynolds, Gabrielle Union, Ming-Na Wen and many others will share their personal stories and connections to their favorite titles throughout the series.